

The Laurels, Knighton Park Road

£250,000 Leasehold

A spacious third-floor apartment in Stoneygate with views of Victoria Park, a balcony, two double bedrooms and allocated parking, close to Queens Road and local amenities.

Council Tax band: E

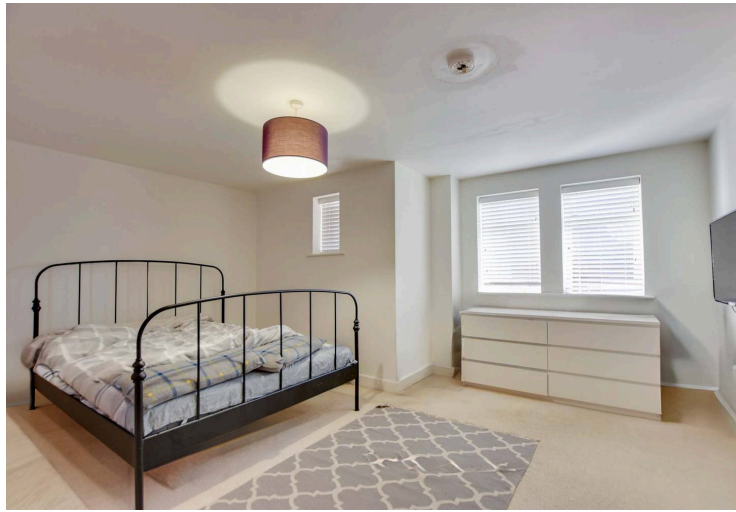
Tenure: Leasehold

EPC Energy Efficiency Rating: C



0116 274 5544





Entrance Hall

With a storage cupboard, airing cupboard, wall heater and laminate flooring.

Open Plan Lounge Kitchen Dining Room

29' 2" x 24' 10" (8.90m x 7.58m)

(narrowing to 3.75) With two double-glazed windows to the side elevations, double-glazed French doors to the balcony, wall heater, a sink and drainer unit with a range of wall and base units with work surfaces over, underunit lighting, electric oven and hob, chimney hood, fridge, freezer, dishwasher and a washing machine.

Bedroom One

15' 7" x 12' 8" (4.74m x 3.86m)

With a double-glazed window to the rear elevation and a wall heater.



En-Suite Shower Room

7' 1" x 6' 2" (2.15m x 1.88m)

With a double-glazed window to the rear elevation, spotlights, a tiled shower cubicle, a wash hand basin, a low-level WC, tiled flooring, and a heated chrome towel rail.

Bedroom Two

14' 4" x 12' 4" (4.38m x 3.75m)

(narrowing to 3.04m) With double-glazed French doors to the balcony, double-glazed window to the side elevation and a wall heater.

Bathroom

7' 6" x 6' 6" (2.28m x 1.97m)

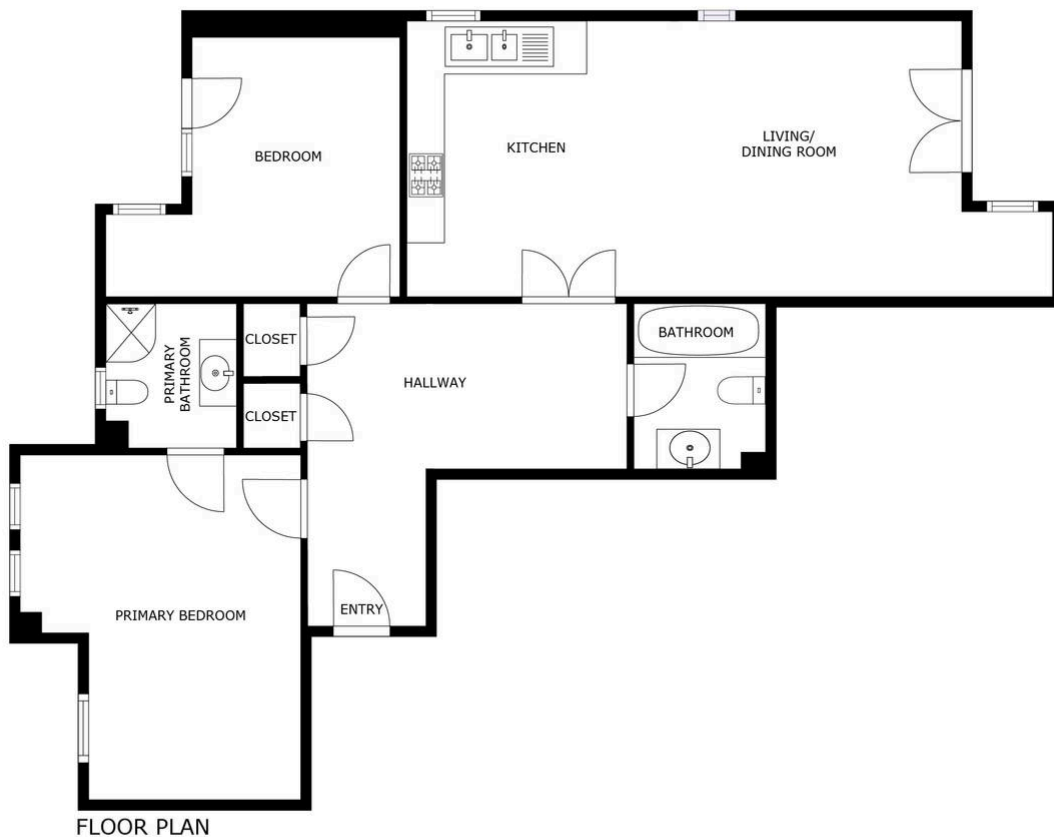
With a Jacuzzi bath with a shower head over, a low-level WC, a wash hand basin, extractor fan, spotlights and a heated chrome towel rail.

Communal Garden

Residents can make the most of the communal gardens, which are regularly maintained and provide an attractive, welcoming outdoor setting.

Balcony

A well-sized balcony extends the living space and provides a pleasant area for seating, plants or simply taking in the view.



igatag=

SIZES AND DIMENSIONS ARE APPROXIMATE, ACTUAL MAY VARY.



We'll keep you moving...



We must inform all prospective purchasers that the measurements are taken by an electronic tape and are provided as a guide only and they should not be used as accurate measurements. We have not tested any mains services, gas or electric appliances, or fixtures and fittings mentioned in these details, therefore, prospective purchasers should satisfy themselves before committing to purchase. Intending purchasers must satisfy themselves by inspection or otherwise to the correctness of the statements contained in these particulars. Knightsbridge Estate Agents & valuers (nor any person in their employment) has any authority to make any representation or warranty in relation to the property. The floor plans are not to scale, and are intended for use as a guide to the layout of the property only. They should not be used for any other purpose. Similarly, the plans are not designed to represent the actual décor found at the property in respect of flooring, wall coverings or fixtures and fittings.