

Victoria Gardens, London Road

£220,000

A SPACIOUS second floor flat providing a generous open plan lounge dining room enjoying a balcony to the front. Parking is via a garage located in a block. Ideally first time purchase or investment.

Council Tax band: C

Tenure: Leasehold

EPC Energy Efficiency Rating: C



0116 274 5544





Communal Entrance

With access to the private entrance hall.

Private Entrance Hall

With storage cupboard, radiator.

Through Lounge Dining Room

19' 11" x 19' 10" (6.08m x 6.05m)

Measurement narrowing to 3.96 m. With double glazed door to the balcony, double glazed windows to the side and front elevations, radiator.

Kitchen

11' 1" x 8' 5" (3.39m x 2.56m)

With double glazed window to the front elevation, stainless steel sink and drainer unit with a range of wall and base units with work surface over, built-in oven and gas hob with filter hood over, stainless steel splashback, built-in dishwasher, plumbing for washing machine, cupboard housing boiler, radiator.



Bedroom One

10' 8" x 9' 7" (3.26m x 2.91m)

With double glazed window to the rear elevation, fitted wardrobes, radiator.

Bedroom Two

11' 3" x 9' 3" (3.42m x 2.83m)

With double glazed window to the front elevation, fitted wardrobes, radiator.

Bathroom

7' 7" x 6' 6" (2.30m x 1.99m)

With double glazed window to the side elevation, bath with electric shower over, wash hand basin, part tiled walls, heated towel rail.

Separate WC

5' 3" x 5' 10" (1.59m x 1.79m)

With low-level WC.

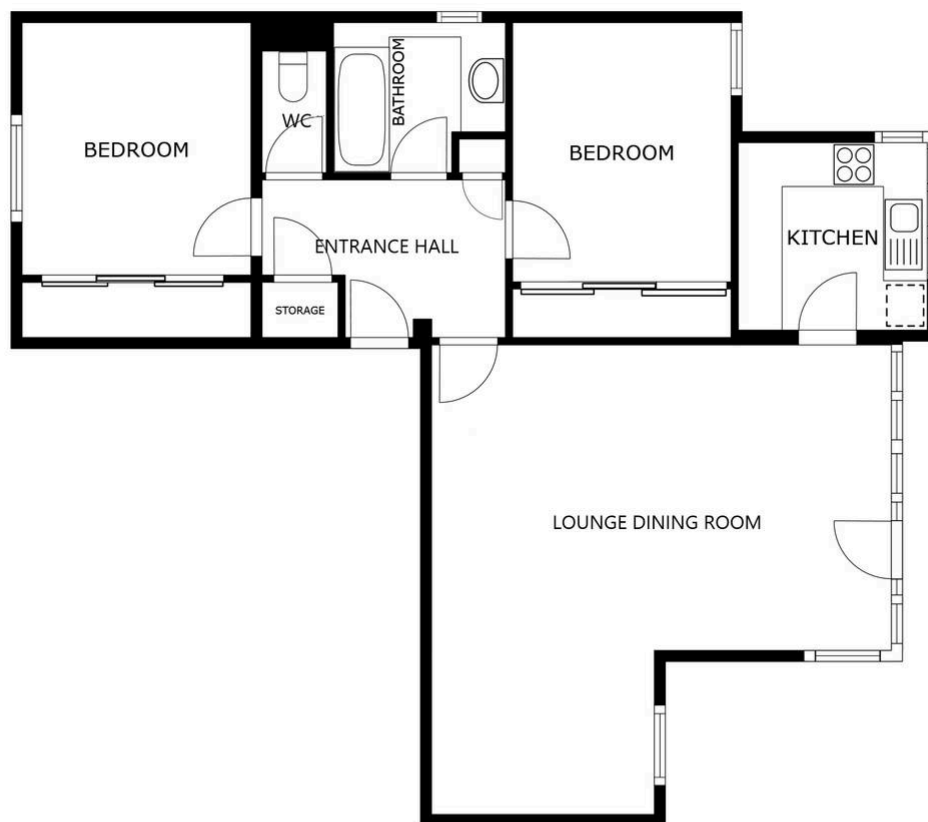
Communal Garden

Communal Parking

Lease Details

Current Service Charge: £2000.77 per annum. Paid monthly

Length of Lease: 138 years remaining



FLOOR PLAN

SIZES AND DIMENSIONS ARE APPROXIMATE, ACTUAL MAY VARY.



We'll keep you moving...



We must inform all prospective purchasers that the measurements are taken by an electronic tape and are provided as a guide only and they should not be used as accurate measurements. We have not tested any mains services, gas or electric appliances, or fixtures and fittings mentioned in these details, therefore, prospective purchasers should satisfy themselves before committing to purchase. Intending purchasers must satisfy themselves by inspection or otherwise to the correctness of the statements contained in these particulars. Knightsbridge Estate Agents & valuers (nor any person in their employment) has any authority to make any representation or warranty in relation to the property.' The floor plans are not to scale, and are intended for use as a guide to the layout of the property only. They should not be used for any other purpose. Similarly, the plans are not designed to represent the actual décor found at the property in respect of flooring, wall coverings or fixtures and fittings.