



Wheatsheaf Court, Knighton Fields

In Excess of £100,000

Located in the WHEATSHEAF WORKS development is this second floor studio providing an ideal home or investment. The property has a GENEROUSLY SIZED open plan living kitchen dining/bedroom.

Council Tax band: A

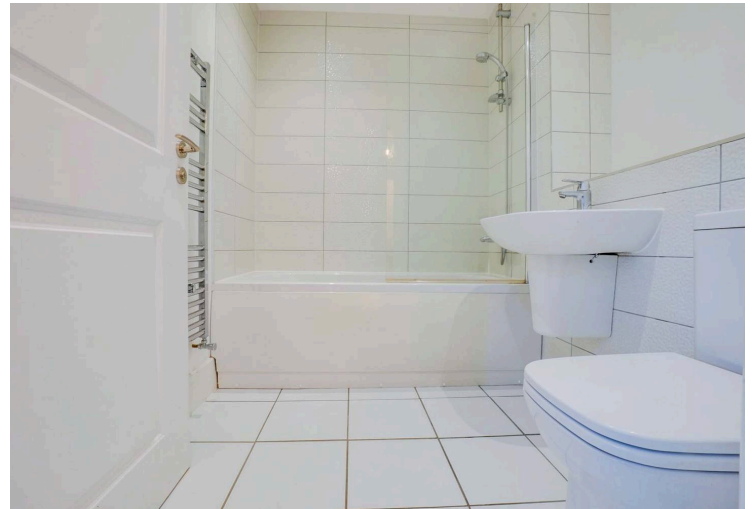
Tenure: Leasehold

EPC Energy Efficiency Rating: C



0116 274 5544





Communal Entrance

With stairs or lift to second floor.

Open Plan Living Kitchen Dining/Bedroom

19' 2" x 18' 6" (5.84m x 5.64m)

Measurement narrowing to 3.6 m. With three double glazed skylight windows to the rear elevation.

Kitchen Area

With tiled floor, stainless steel sink and drainer unit, a range of wall and base units with work surface over, built-in oven and hob with stainless steel chimney hood over and splashback, radiator.

Living/Bedroom Area

With exposed beams, carpet floor, cupboard housing boiler, plumbing for washing machine, two radiators.



Bathroom

7' 7" x 6' 8" (2.31m x 2.04m)

With bath having mixer tap shower attachment, low-level WC, wash hand basin, part tiled walls, tiled floor, inset ceiling spotlights, heated towel rail.

Communal Garden

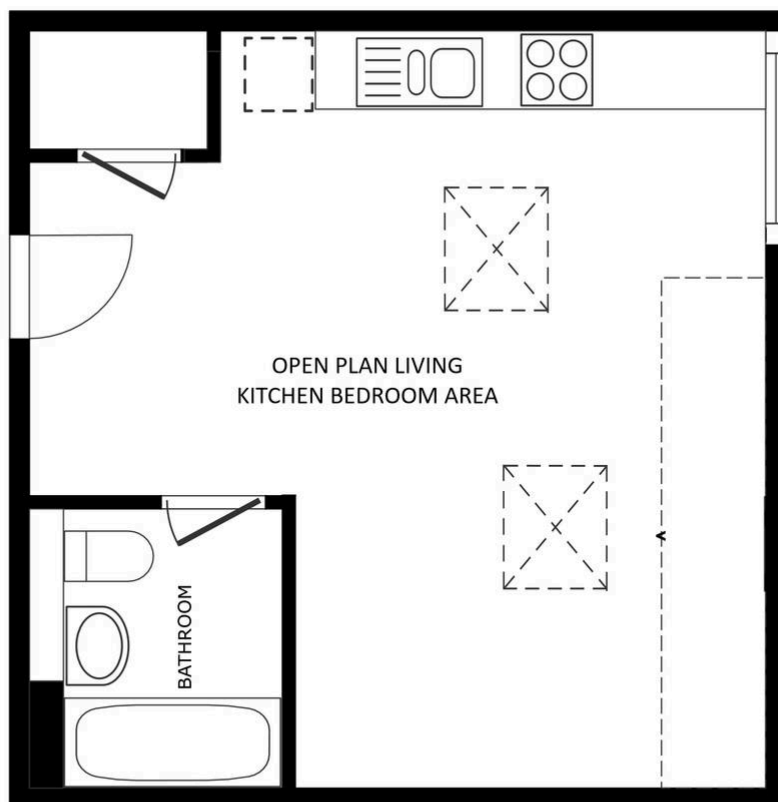
Decked communal grounds.

Lease info:

Ground Rent: £150.00 Annually

Service charge: £2490 annually

Remaining Lease: 116 Years



FLOOR PLAN

SIZES AND DIMENSIONS ARE APPROXIMATE, ACTUAL MAY VARY.



We'll keep you moving...



We must inform all prospective purchasers that the measurements are taken by an electronic tape and are provided as a guide only and they should not be used as accurate measurements. We have not tested any mains services, gas or electric appliances, or fixtures and fittings mentioned in these details, therefore, prospective purchasers should satisfy themselves before committing to purchase. Intending purchasers must satisfy themselves by inspection or otherwise to the correctness of the statements contained in these particulars. Knightsbridge Estate Agents & valuers (nor any person in their employment) has any authority to make any representation or warranty in relation to the property.' The floor plans are not to scale, and are intended for use as a guide to the layout of the property only. They should not be used for any other purpose. Similarly, the plans are not designed to represent the actual décor found at the property in respect of flooring, wall coverings or fixtures and fittings.