

Plymouth Drive, Evington

£290,000

NO UPWARD CHAIN - Traditional semi-detached home with three bedrooms, wet room, TWO reception rooms, a kitchen, driveway, front and rear gardens. Potential for modernisation and extension (STPP).

Council Tax band: B

Tenure: Freehold

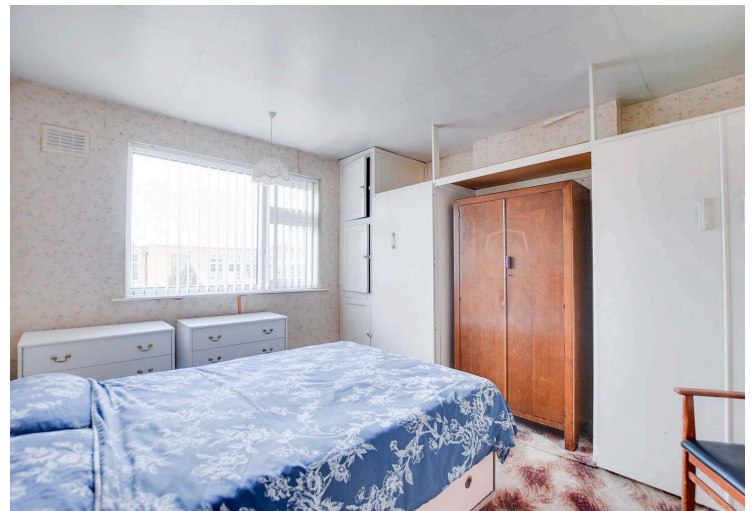
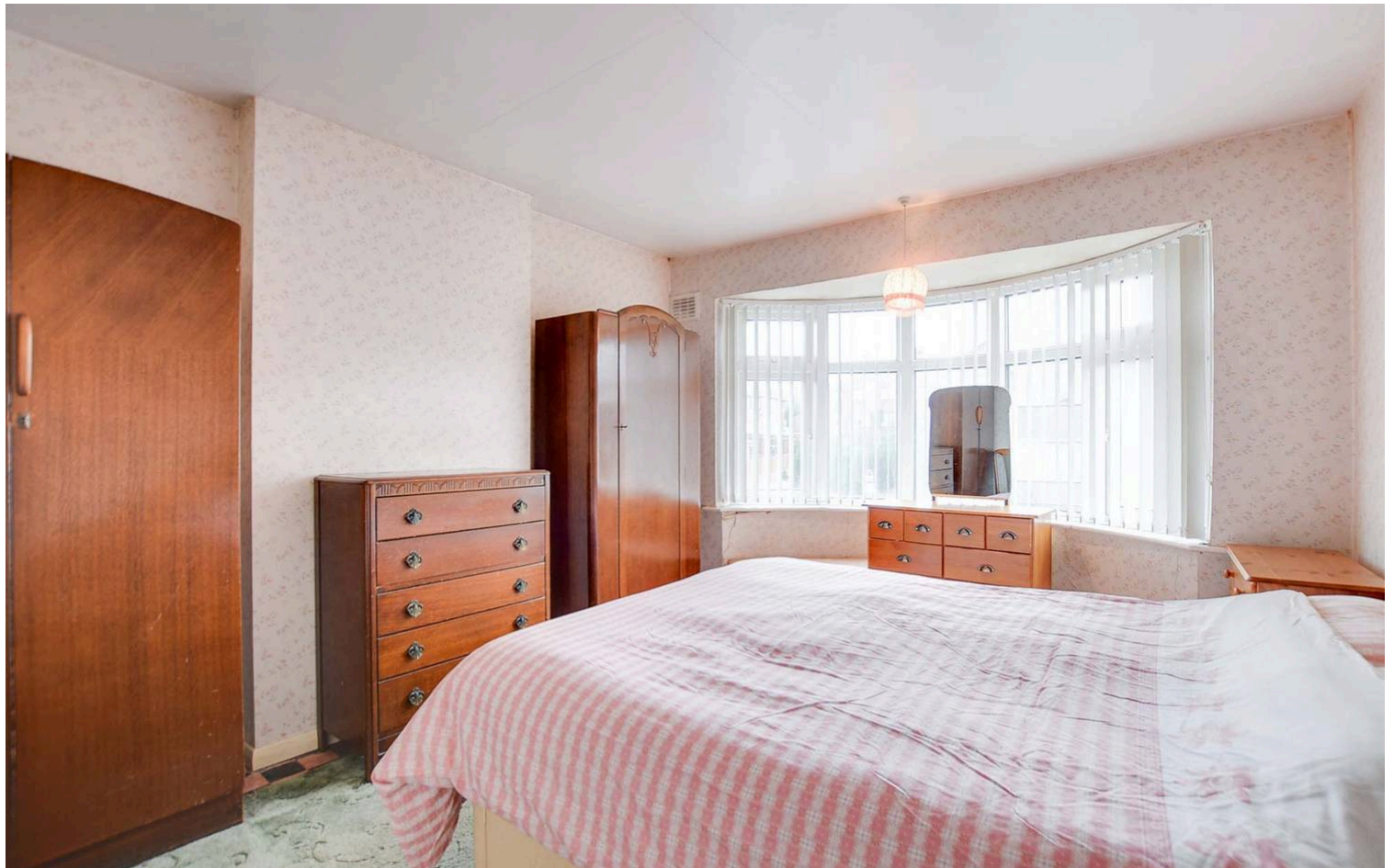
EPC Dating: D



Knightsbridge
Estate Agents

0116 274 5544





Entrance Porch

With an internal door to the entrance hall.

Entrance Hall

With stairs to the first floor landing, an understairs storage cupboard, an understairs meter cupboard, radiator.

Reception Room One

13' 9" x 10' 11" (4.18m x 3.32m)

(maximum measurements) With a double-glazed bay window to the front elevation, a gas fire, a TV point, radiator.

Reception Room Two

12' 0" x 10' 11" (3.67m x 3.33m)

With double-glazed patio doors to the rear garden, a gas fire, radiator.



Kitchen

8' 10" x 6' 5" (2.70m x 1.96m)

With a double-glazed window to the side elevation, door to the rear garden, a sink and drainer unit with a range of wall and base units with work surfaces over, a gas cooker point, tiled flooring, radiator.

First Floor Landing

With a double-glazed window to the side elevation.

Bedroom One

13' 11" x 10' 10" (4.24m x 3.31m)

With a double-glazed bay window to the front elevation, radiator.

Bedroom Two

12' 0" x 10' 11" (3.67m x 3.32m)

With a double-glazed window to the rear elevation, a cupboard housing the boiler, radiator.

Bedroom Three

8' 7" x 3' 10" (2.61m x 1.18m)

With a double-glazed window to the front elevation, radiator.

Shower Room

6' 11" x 6' 5" (2.11m x 1.96m)

With a double-glazed window to the rear elevation, wet room style shower, WC, wash hand basin, tiled walls, extractor fan, loft access, radiator.

Front Garden

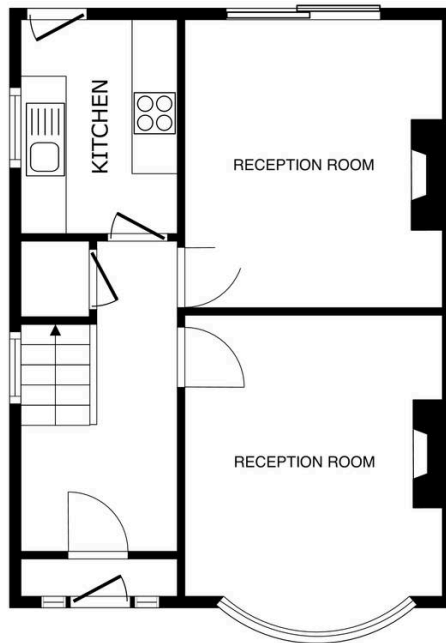
With a lawn and shrubs.

Rear Garden

With a paved patio seating area, lawn, plants and shrubs borders, two sheds, greenhouse, outside store, outside tap, and side access.

Driveway

Please note that parking is subject to vehicle size. Prospective purchasers should ensure the dimensions are suitable for their vehicle before relying on it for parking purposes.



FLOOR 1

SIZES AND DIMENSIONS ARE APPROXIMATE, ACTUAL MAY VARY.



FLOOR 2

SIZES AND DIMENSIONS ARE APPROXIMATE, ACTUAL MAY VARY.



We'll keep you moving...



We must inform all prospective purchasers that the measurements are taken by an electronic take and are provided as a guide only and they should not be used as accurate measurements. We have not tested any mains services, gas or electric appliances, or fixtures and fittings mentioned in these details, therefore, prospective purchasers should satisfy themselves before committing to purchase. Intending purchasers must satisfy themselves by inspection or otherwise to the correctness of the statements contained in these particulars. Knightsbridge Estate Agents (nor any person in their employment) has any authority to make any representation or warranty in relation to the property. The floor plans are not to scale, and are intended for use as a guide to the layout of the property only. They should not be used for any other purpose. We are required by law to conduct anti-money laundering checks on all those selling or buying a property. Whilst we retain responsibility for ensuring checks and any ongoing monitoring are carried out correctly, the initial checks are carried out on our behalf by Lifetime Legal who will contact you once you have agreed to instruct us in your sale or had an offer accepted on a property you wish to buy. The cost of these checks is £60 (incl. VAT), which covers the cost of obtaining relevant data and any manual checks and monitoring which might be required. This fee will need to be paid by you in advance of us publishing your property (in the case of a vendor) or issuing a memorandum of sale (in the case of a buyer), directly to Lifetime Legal, and is non-refundable. We will receive some of the fee taken by Lifetime Legal to compensate for its role in the provision of these checks.