

Mayflower Road, Evington

In Excess of £325,000

A THREE BEDROOM period semi-detached family home providing versatile accommodation to include a through lounge diner and a kitchen with BUILT-IN APPLIANCES. Outside enjoys front and rear gardens.

Council Tax band: C

Tenure: Freehold

EPC Energy Efficiency Rating: D



**Knightsbridge
Estate Agents**

0116 274 5544





Entrance Porch

With access to entrance hall.

Entrance Hall

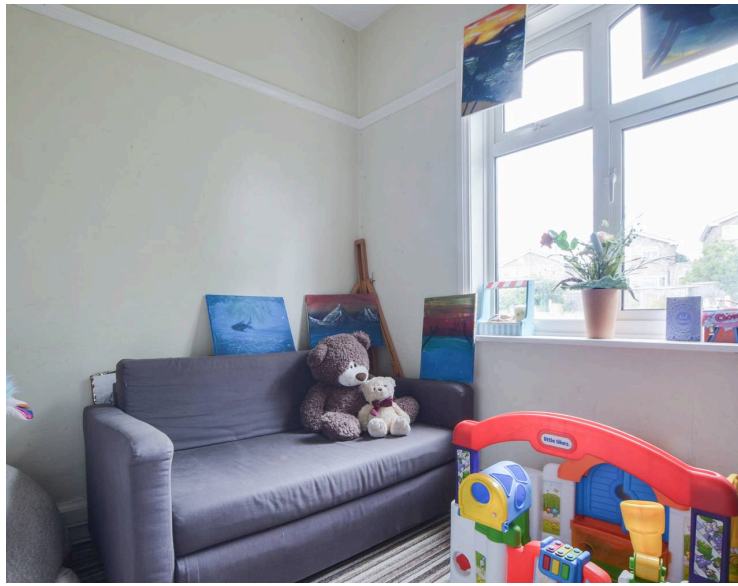
With double glazed window to the side elevation, tiled floor, picture rail, stairs to first floor, radiator.

Through Lounge Diner 27' 4" x 10' 9" (8.34m x 3.28m)

With double bay glazed window to the front elevation, double glazed patio doors to the rear elevation, two chimney breasts, ceiling coving, TV point, two radiators.

Fitted Kitchen 15' 1" x 7' 11" (4.60m x 2.42m)

With double glazed windows to the rear and side elevations, double glazed door to the rear garden, ceramic tiled floor, part tiled walls, a range of wall and base units with work surface over, stainless steel sink and drainer unit, inset five ring gas hob, integrated double oven, integrated fridge, integrated freezer, plumbing for washing machine, spotlights.



Ground Floor WC

With low-level WC, wash hand basin.

First Floor Landing

With double glazed window to the side elevation, loft access, picture rail.

Principal Bedroom 14' 11" x 11' 10" (4.54m x 3.61m)

With double glazed bay window to the front elevation, further double glazed window to the front elevation, built-in wardrobes, picture rail, radiator.

Bedroom Two 12' 7" x 8' 8" (3.83m x 2.63m)

With double glazed window to the rear elevation, wood effect floor, built-in wardrobes and drawers, picture rail, radiator.

Bedroom Three 8' 0" x 6' 6" (2.45m x 1.97m)

With double glazed window to the rear elevation, built-in wardrobes, radiator.

Shower Room 6' 4" x 4' 9" (1.93m x 1.45m)

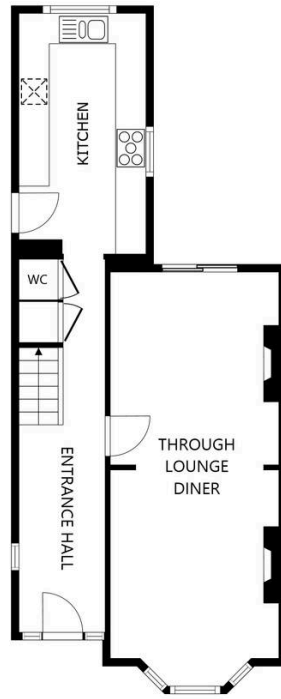
With double glazed window to the side elevation, shower cubicle, low-level WC, wash hand basin with storage below, laminate walls, chrome ladder towel rail/radiator.

Front Garden

Paved and gravelled front garden with shrubs, gated access to rear garden.

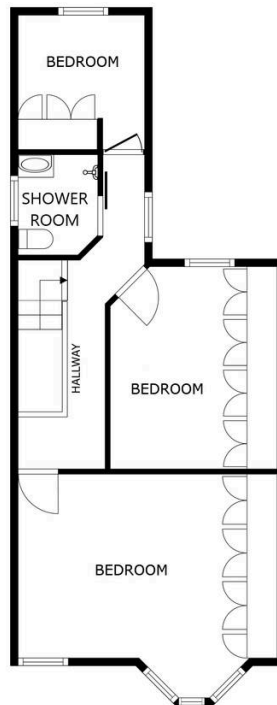
Rear Garden

With paved patio seating area, steps to the lawn, flowerbeds and shrubs, fenced and hedged perimeter.



FLOOR 1

SIZES AND DIMENSIONS ARE APPROXIMATE, ACTUAL MAY VARY.



FLOOR 2

SIZES AND DIMENSIONS ARE APPROXIMATE, ACTUAL MAY VARY.



We'll keep you moving...



We must inform all prospective purchasers that the measurements are taken by an electronic take and are provided as a guide only and they should not be used as accurate measurements. We have not tested any mains services, gas or electric appliances, or fixtures and fittings mentioned in these details, therefore, prospective purchasers should satisfy themselves before committing to purchase. Intending purchasers must satisfy themselves by inspection or otherwise to the correctness of the statements contained in these particulars. Knightsbridge Estate Agents (nor any person in their employment) has any authority to make any representation or warranty in relation to the property. The floor plans are not to scale, and are intended for use as a guide to the layout of the property only. They should not be used for any other purpose. We are required by law to conduct anti-money laundering checks on all those selling or buying a property. Whilst we retain responsibility for ensuring checks and any ongoing monitoring are carried out correctly, the initial checks are carried out on our behalf by Lifetime Legal who will contact you once you have agreed to instruct us in your sale or had an offer accepted on a property you wish to buy. The cost of these checks is £60 (incl. VAT), which covers the cost of obtaining relevant data and any manual checks and monitoring which might be required. This fee will need to be paid by you in advance of us publishing your property (in the case of a vendor) or issuing a memorandum of sale (in the case of a buyer), directly to Lifetime Legal, and is non-refundable. We will receive some of the fee taken by Lifetime Legal to compensate for its role in the provision of these checks.