



Northfold Road, Knighton

£310,000

A traditional three bedroom semi-detached property available with NO UPWARD CHAIN. The home has SCOPE FOR EXTENSION, subject to relevant planning permissions. Ideally situated for schooling.

Council Tax band: B

Tenure: Freehold

EPC Energy Efficiency Rating: D



0116 274 5544





Entrance Hall

With stairs to first floor, under stairs storage meter cupboard, under stairs storage cupboard, vinyl floor, radiator.

Reception Room One

13' 4" x 10' 7" (4.06m x 3.23m)

Measurements into bay window and recess. With double glazed bay window to the front elevation, laminate floor, radiator.

Reception Rom Two

11' 10" x 10' 7" (3.61m x 3.23m)

With double glazed door to rear garden, radiator.

Kitchen

9' 2" x 8' 4" (2.79m x 2.54m)

With double glazed window to the rear elevation, double glazed door to the side elevation, stainless steel sink and drainer unit with a range of wall and base units with work surface over, built-in oven and five ring gas hob, stainless steel chimney hood over, plumbing for washing machine, wood effect floor, part tiled walls, radiator.



First Floor Landing

With double glazed window to the side elevation.

Bedroom One

13' 4" x 10' 8" (4.06m x 3.25m)

With double glazed bay window to the front elevation, radiator.

Bedroom Two

12' 0" x 10' 8" (3.66m x 3.25m)

With double glazed window to the rear elevation, radiator.

Bedroom Three

6' 6" x 6' 0" (1.98m x 1.83m)

With double glazed window to the front elevation, radiator.

Bathroom

8' 4" x 5' 10" (2.54m x 1.78m)

With double glazed window to the rear elevation, bath with shower over, pedestal wash hand basin, low-level WC, cupboard housing boiler, part tiled walls, vinyl floor, radiator.

Front Garden

With gravelled area, paved pathway, gate to side access, mature shrubs.

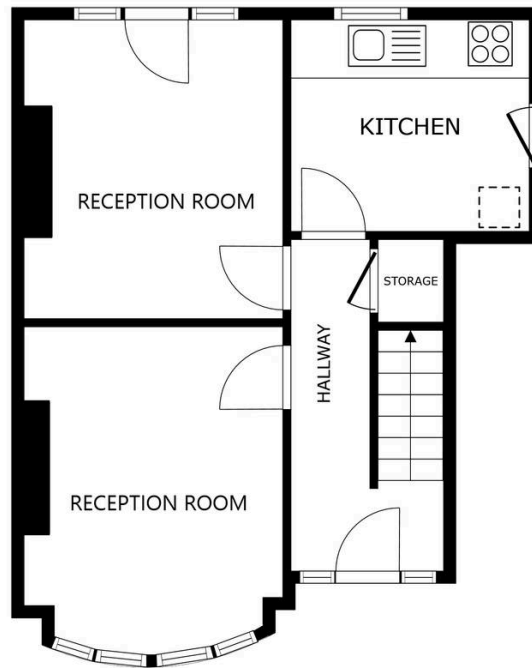
Rear Garden

With paved patio area, lawn, fencing to perimeter, flowerbeds and shrubs, mature trees to rear., outside store.

Driveway 1 Vehicle

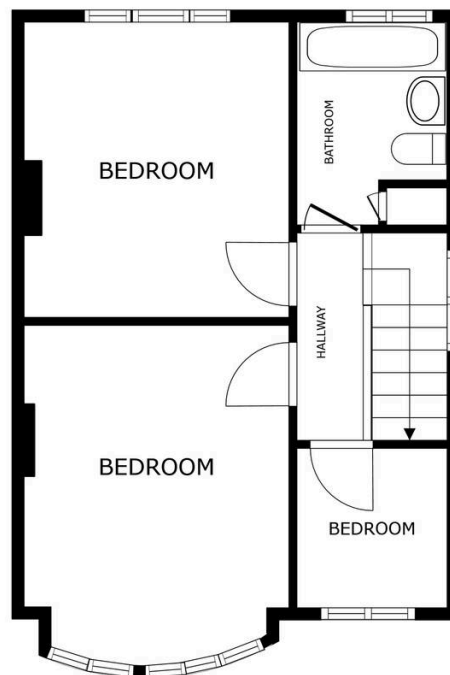
Permit Parking Zones

The property is within a controlled parking zone. Buyers and tenants should make their own enquiries with the local council regarding permit availability and associated costs.



FLOOR 1

SIZES AND DIMENSIONS ARE APPROXIMATE, ACTUAL MAY VARY.



FLOOR 2

SIZES AND DIMENSIONS ARE APPROXIMATE, ACTUAL MAY VARY.



We'll keep you moving...



We must inform all prospective purchasers that the measurements are taken by an electronic take and are provided as a guide only and they should not be used as accurate measurements. We have not tested any mains services, gas or electric appliances, or fixtures and fittings mentioned in these details, therefore, prospective purchasers should satisfy themselves before committing to purchase. Intending purchasers must satisfy themselves by inspection or otherwise to the correctness of the statements contained in these particulars. Knightsbridge Estate Agents (nor any person in their employment) has any authority to make any representation or warranty in relation to the property. The floor plans are not to scale, and are intended for use as a guide to the layout of the property only. They should not be used for any other purpose. We are required by law to conduct anti-money laundering checks on all those selling or buying a property. Whilst we retain responsibility for ensuring checks and any ongoing monitoring are carried out correctly, the initial checks are carried out on our behalf by Lifetime Legal who will contact you once you have agreed to instruct us in your sale or had an offer accepted on a property you wish to buy. The cost of these checks is £60 (incl. VAT), which covers the cost of obtaining relevant data and any manual checks and monitoring which might be required. This fee will need to be paid by you in advance of us publishing your property (in the case of a vendor) or issuing a memorandum of sale (in the case of a buyer), directly to Lifetime Legal, and is non-refundable. We will receive some of the fee taken by Lifetime Legal to compensate for its role in the provision of these checks.