



Danvers Road, Off Narborough Road

In Excess of £200,000

Located on Danvers Road just off Narborough Road is this BAY FRONTED period terrace property providing great accommodation. The accommodation includes two reception rooms and TWO BEDROOMS.

Council Tax band: A

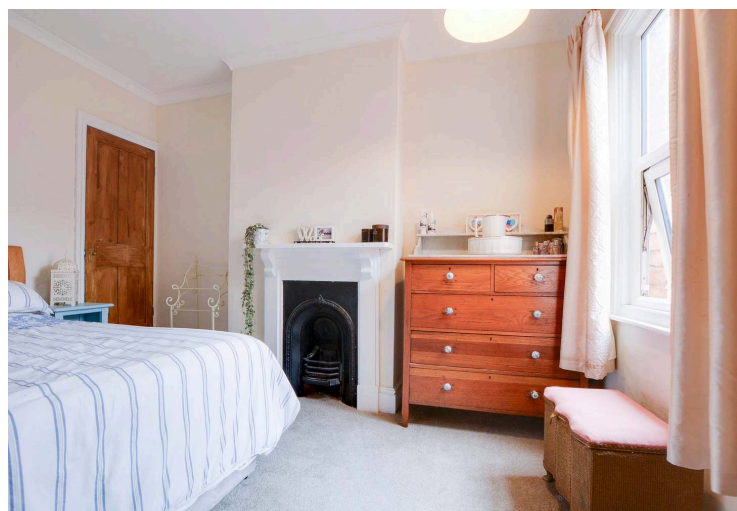
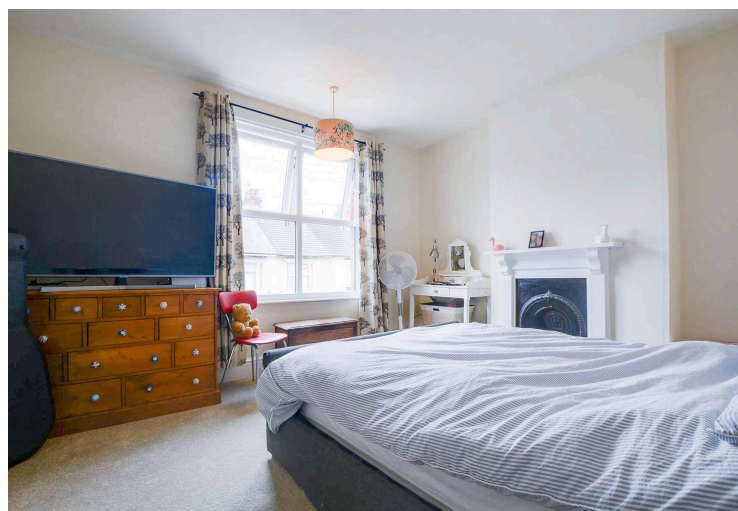
Tenure: Freehold

EPC Energy Efficiency Rating: E



0116 274 5544





Reception Room One

13' 6" x 11' 5" (4.11m x 3.48m)

With double glazed bay window to the front elevation, chimney breast with electric fire and hearth, ceiling coving, meter cupboard, shelving, TV point, radiator.

Reception Room Two

11' 11" x 11' 5" (3.62m x 3.48m)

With double glazed window to the rear elevation, chimney breast, door to kitchen, door to stairs leading to first floor, TV point, radiator.

Kitchen

13' 11" x 6' 10" (4.23m x 2.08m)

With double glazed window to the side elevation, double glazed door to the rear garden, a range of base units with work surface over, stainless steel sink, drainer and mixer tap, space for gas cooker, space for fridge freezer, space and plumbing for dishwasher, radiator.



First Floor Landing

With loft access, radiator.

Bedroom One

13' 0" x 12' 0" (3.97m x 3.65m)

With double glazed window to the front elevation, chimney breast with fireplace and surround, TV point, radiator.

Bedroom Two

11' 11" x 10' 0" (3.63m x 3.05m)

With double glazed window to the rear elevation, chimney breast with fireplace and surround, ceiling coving, built-in over stairs storage cupboards, TV point, radiator.

Bathroom

12' 3" x 6' 9" (3.74m x 2.07m)

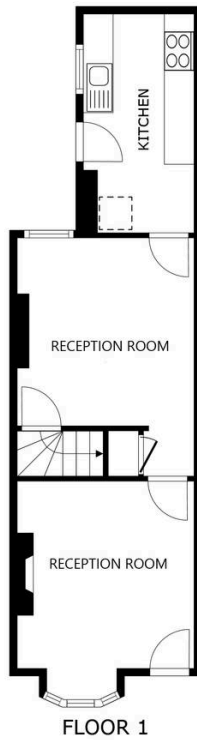
With double glazed window to the rear elevation, bath with shower over, low-level WC, wash hand basin, part tiled walls, built-in cupboard housing gas boiler, radiator.

Front Garden

Front forecourt.

Rear Garden

With paved patio seating area, lawn, three out buildings one with plumbing for washing machine, one outside toilet, one for outside storage, fencing and walled perimeter.



FLOOR 1

SIZES AND DIMENSIONS ARE APPROXIMATE, ACTUAL MAY VARY.



FLOOR 2

SIZES AND DIMENSIONS ARE APPROXIMATE, ACTUAL MAY VARY.



We'll keep you moving...



We must inform all prospective purchasers that the measurements are taken by an electronic take and are provided as a guide only and they should not be used as accurate measurements. We have not tested any mains services, gas or electric appliances, or fixtures and fittings mentioned in these details, therefore, prospective purchasers should satisfy themselves before committing to purchase. Intending purchasers must satisfy themselves by inspection or otherwise to the correctness of the statements contained in these particulars. Knightsbridge Estate Agents (nor any person in their employment) has any authority to make any representation or warranty in relation to the property. The floor plans are not to scale, and are intended for use as a guide to the layout of the property only. They should not be used for any other purpose. We are required by law to conduct anti-money laundering checks on all those selling or buying a property. Whilst we retain responsibility for ensuring checks and any ongoing monitoring are carried out correctly, the initial checks are carried out on our behalf by Lifetime Legal who will contact you once you have agreed to instruct us in your sale or had an offer accepted on a property you wish to buy. The cost of these checks is £60 (incl. VAT), which covers the cost of obtaining relevant data and any manual checks and monitoring which might be required. This fee will need to be paid by you in advance of us publishing your property (in the case of a vendor) or issuing a memorandum of sale (in the case of a buyer), directly to Lifetime Legal, and is non-refundable. We will receive some of the fee taken by Lifetime Legal to compensate for its role in the provision of these checks.