

Dale Street, Spinney Hills

Offers Over £280,000

A modern style and BEAUTIFULLY DESIGNED terrace property creating the ideal space ready to move into. With THREE BEDROOMS and a loft area providing ideal storage and a shower room.

Council Tax band: A

Tenure: Freehold

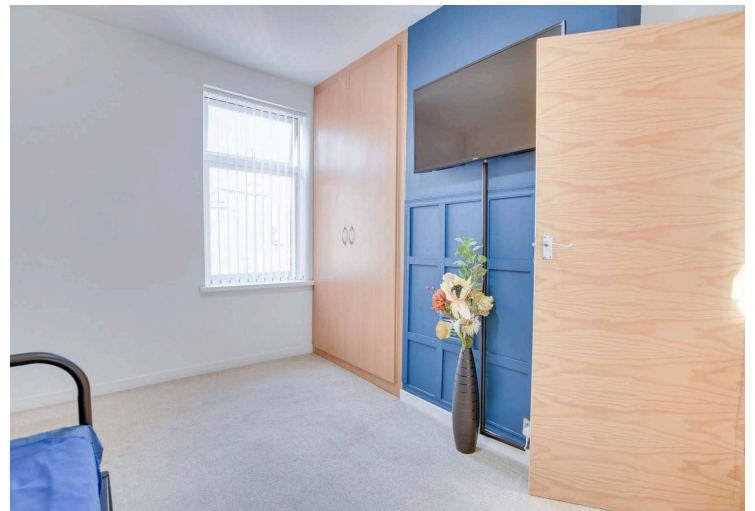
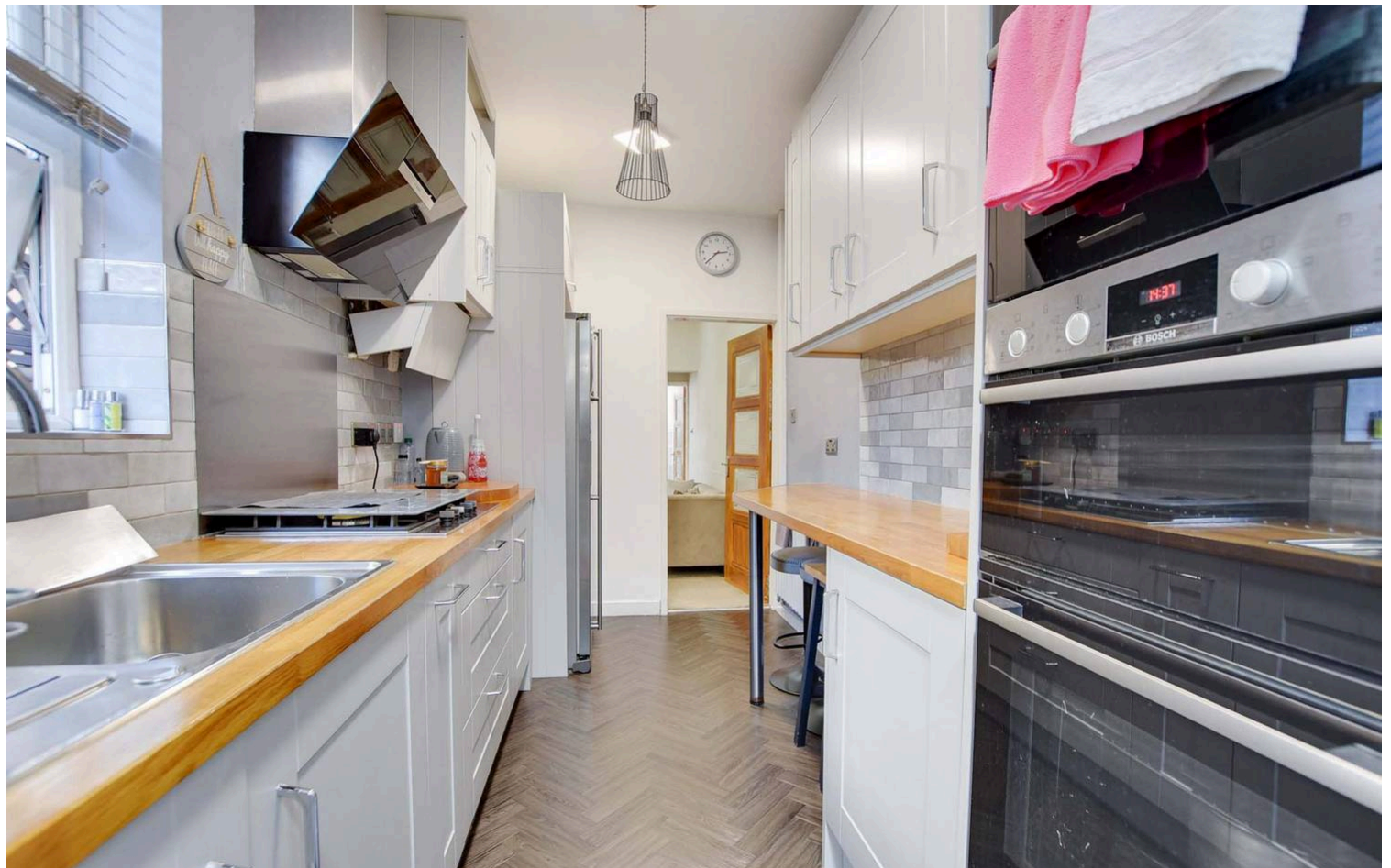
EPC Energy Efficiency Rating: C



Knightsbridge
Estate Agents

0116 274 5544





Reception Room One 12' 2" x 11' 0" (3.71m x 3.35m)

With double glazed window to the front elevation, part laminate and part carpet floor, meter cupboard, shaker style wall panelling, gas fire, radiator.

Reception Room Two 11' 11" x 10' 10" (3.63m x 3.30m)

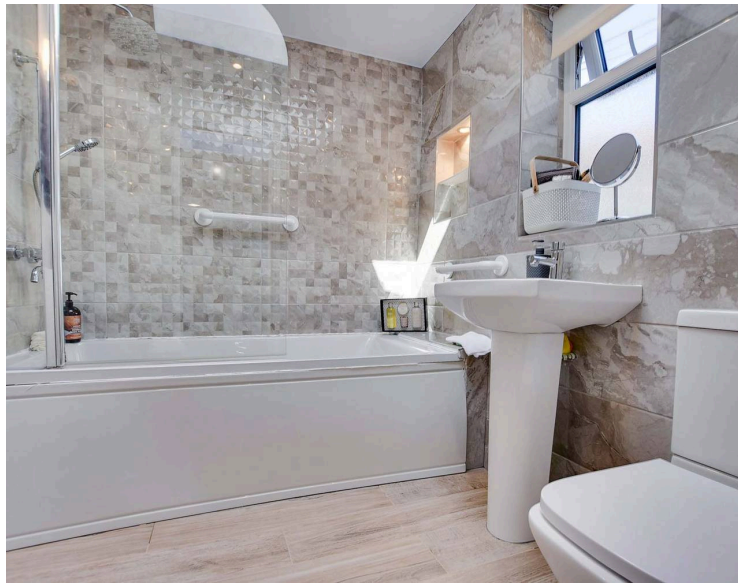
With double glazed window to the rear elevation, under stairs storage cupboards, carpet floor, stairs to first floor, gas fire, radiator.

Kitchen 12' 10" x 6' 10" (3.91m x 2.08m)

With double glazed window to the side elevation, wall and base units with work surface over, fitted double oven and microwave, hob with extractor hood over, sink and drainer, space for fridge freezer, part tiled walls, herringbone style laminate floor, radiator.

Utility Room 6' 6" x 6' 0" (1.98m x 1.83m)

With double glazed window to the side elevation, double glazed skylight, space for washing machine, shelving, door to rear garden.



FLOOR 1



Ground Floor Bathroom 7' 5" x 6' 4" (2.26m x 1.93m)

With double glazed window to the side elevation, double glazed skylight, tiled walls, wood effect floor, bath, wash hand basin, low-level WC, radiator.

First Floor Landing

With loft access.

Bedroom One 12' 6" x 11' 11" (3.81m x 3.63m)

With double glazed window to the front elevation, fitted wardrobes and shelving, carpet floor, radiator.

Bedroom Two 12' 0" x 8' 6" (3.66m x 2.59m)

With double glazed window to the rear elevation, carpet floor, fitted wardrobes, staircase to loft area, radiator.

Bedroom Three 9' 9" x 6' 11" (2.97m x 2.11m)

With double glazed window to the rear elevation, carpet floor, radiator.

WC 3' 8" x 2' 9" (1.12m x 0.84m)

With double glazed window to the side elevation, vinyl floor, tiled walls, low-level WC, wash hand basin.

Loft Room 16' 6" x 11' 7" (5.03m x 3.53m)

With double glazed Velux window to the front elevation, eaves storage cupboard, carpet floor, radiator.

Shower Room 5' 11" x 4' 7" (1.80m x 1.40m)

With double glazed Velux window to the rear elevation, eaves storage cupboard, vinyl floor, part tiled walls, walk-in shower area, wash hand basin with storage below.

Rear Garden

A paved rear garden with fencing to perimeter, gate to side access.



FLOOR 2



FLOOR 3



We'll keep you moving...



We must inform all prospective purchasers that the measurements are taken by an electronic take and are provided as a guide only and they should not be used as accurate measurements. We have not tested any mains services, gas or electric appliances, or fixtures and fittings mentioned in these details, therefore, prospective purchasers should satisfy themselves before committing to purchase. Intending purchasers must satisfy themselves by inspection or otherwise to the correctness of the statements contained in these particulars. Knightsbridge Estate Agents (nor any person in their employment) has any authority to make any representation or warranty in relation to the property. The floor plans are not to scale, and are intended for use as a guide to the layout of the property only. They should not be used for any other purpose. We are required by law to conduct anti-money laundering checks on all those selling or buying a property. Whilst we retain responsibility for ensuring checks and any ongoing monitoring are carried out correctly, the initial checks are carried out on our behalf by Lifetime Legal who will contact you once you have agreed to instruct us in your sale or had an offer accepted on a property you wish to buy. The cost of these checks is £60 (incl. VAT), which covers the cost of obtaining relevant data and any manual checks and monitoring which might be required. This fee will need to be paid by you in advance of us publishing your property (in the case of a vendor) or issuing a memorandum of sale (in the case of a buyer), directly to Lifetime Legal, and is non-refundable. We will receive some of the fee taken by Lifetime Legal to compensate for its role in the provision of these checks.