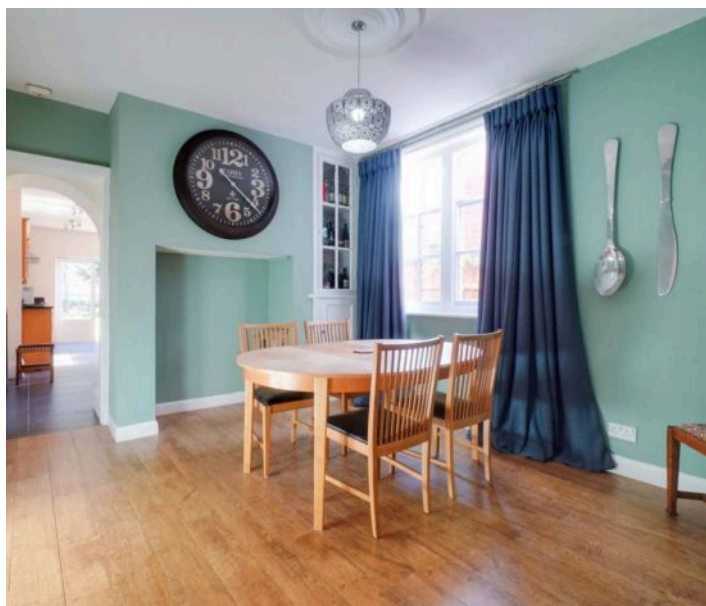
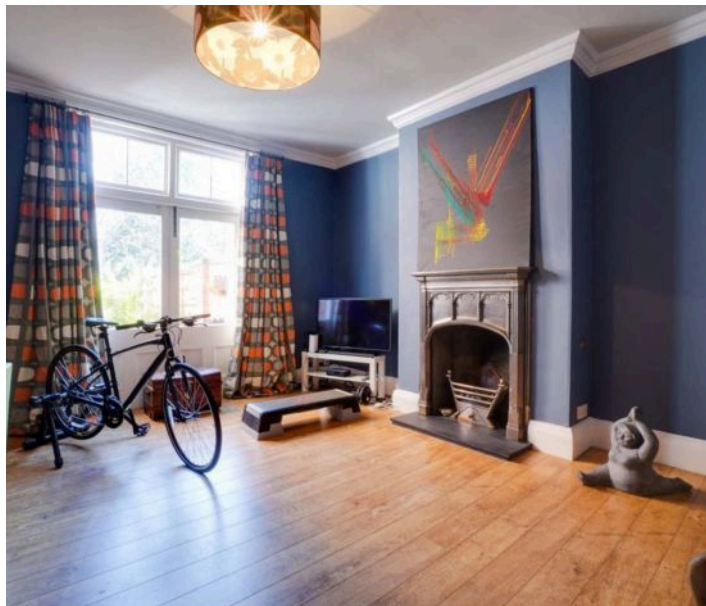


Morland Avenue, Stoneygate

£750,000

A SIX BEDROOM traditional style semi-detached property having GENEROUS SIZED accommodation over three floors to include a cellar. Enjoying much of its ORIGINAL CHARACTER with period features.





Entrance Hall

With ceiling coving, wooden floor, stairs to first floor, alarm panel, radiator.

Ground Floor WC 6' 9" x 4' 4" (2.06m x 1.32m)

With window to the side elevation, wash hand basin, low-level WC, part wood panel wall, vinyl floor.

Cellar

Room One 26' 0" x 6' 1" (7.92m x 1.85m)

With lighting, access to room two.

Room Two 17' 8" x 14' 6" (5.38m x 4.42m)

With meters, lighting, radiator.

Sitting Room 19' 0" x 14' 4" (5.79m x 4.37m)

Measurements into bay window and recess. With part secondary double glazed bay window to the front elevation, ceiling cornice, ceiling rose, living flame effect gas fire with fire surround and hearth, two radiators.

Reception Room Two 14' 4" x 13' 0" (4.37m x 3.96m)

With French doors to the rear elevation, ceiling coving, living flame effect gas fire and hearth, wooden floor, radiator.

Lobby

With door to the side elevation, laminate floor.

Reception Room Three 13' 1" x 10' 5" (3.99m x 3.18m)

With sash window to the side elevation, original storage cupboard, ceiling rose, traditional style radiator.



Kitchen Breakfast Room 21' 7" x 10' 3" (6.58m x 3.12m)

With French doors to rear garden two windows to the side elevation, sink and drainer unit with a range of wall and base units with work surface over, gas cooker point, built-in dishwasher, built-in washing machine, tiled floor, traditional style radiator.

First Floor Split Level Landing

With window to the side elevation, storage cupboard, traditional style radiator.

Bedroom One 20' 0" x 19' 1" (6.10m x 5.82m)

Measurements into bay window and recess. With part secondary double glazed bay window to the front elevation, traditional style fireplace with fire surround, three radiators.



Bedroom Two 14' 4" x 13' 1" (4.37m x 3.99m)

With window to the rear elevation, traditional style fireplace with fire surround, wardrobe, radiator.

Bedroom Three 10' 6" x 8' 7" (3.20m x 2.62m)

With double glazed window to the rear elevation, traditional style fireplace, radiator.

Bathroom 12' 0" x 7' 3" (3.66m x 2.21m)

With window to the side elevation, roll top bath, separate tiled shower cubicle, low-level WC, wash hand basin, traditional style fireplace, wood effect floor, traditional style radiator, further radiator with towel rail.









Separate WC 4' 4" x 3' 2" (1.32m x 0.97m)

With window to the side elevation, high flush WC, wooden floor.

Second Floor Landing

With two windows to the side elevation, loft access having pull down ladder leading to partly boarded loft with velux window, radiator.

Bedroom Four 20' 0" x 14' 0" (6.10m x 4.27m)

With window to the front and side elevations, traditional style fireplace and fire surround, two radiators.

Bedroom Five 14' 4" x 13' 0" (4.37m x 3.96m)

With window to the rear elevation, traditional style fireplace with fire surround, radiator.

Bedroom Six 17' 0" x 10' 6" (5.18m x 3.20m)

With double glazed window to the rear elevation, fitted wardrobes, built-in cupboard, traditional style fireplace, radiator.

Front Garden

With hedging.

Rear Garden

Attractive established rear garden with a southerly aspect, paved patio area, further paved area to the side, lawn, flowerbeds and shrubs, hedging and fencing to perimeter, outside lighting, gate to side access.

Driveway 1 vehicle

Garage 1 vehicle

Further driveway leading to a single garage to the right hand side as you look at the house, the second of the garages on the right hand side, with fold open doors to the front elevation.



FLOOR 3

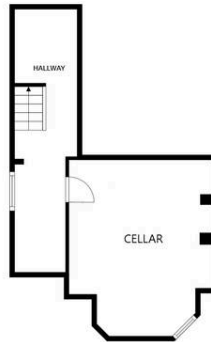
SIZES AND DIMENSIONS ARE APPROXIMATE, ACTUAL MAY VARY.



FLOOR 4

SIZES AND DIMENSIONS ARE APPROXIMATE, ACTUAL MAY VARY.





FLOOR 1

SIZES AND DIMENSIONS ARE APPROXIMATE, ACTUAL MAY VARY.



The property is well located for everyday amenities and services, including local public and private schooling together with nursery day-care, Leicester City Centre and the University of Leicester, Leicester Royal Infirmary and Leicester General Hospital. Within a short distance you'll find Victoria Park together with shopping parades in both Stoneygate and neighbouring Clarendon Park with their specialist shops, bars, boutiques and restaurants.

Council Tax band: F

Tenure: Freehold

EPC Energy Efficiency Rating: E

We'll keep you moving...



We must inform all prospective purchasers that the measurements are taken by an electronic take and are provided as a guide only and they should not be used as accurate measurements. We have not tested any mains services, gas or electric appliances, or fixtures and fittings mentioned in these details, therefore, prospective purchasers should satisfy themselves before committing to purchase. Intending purchasers must satisfy themselves by inspection or otherwise to the correctness of the statements contained in these particulars. Knightsbridge Estate Agents (nor any person in their employment) has any authority to make any representation or warranty in relation to the property. The floor plans are not to scale, and are intended for use as a guide to the layout of the property only. They should not be used for any other purpose. We are required by law to conduct anti-money laundering checks on all those selling or buying a property. Whilst we retain responsibility for ensuring checks and any ongoing monitoring are carried out correctly, the initial checks are carried out on our behalf by Lifetime Legal who will contact you once you have agreed to instruct us in your sale or had an offer accepted on a property you wish to buy. The cost of these checks is £60 (incl. VAT), which covers the cost of obtaining relevant data and any manual checks and monitoring which might be required. This fee will need to be paid by you in advance of us publishing your property (in the case of a vendor) or issuing a memorandum of sale (in the case of a buyer), directly to Lifetime Legal, and is non-refundable. We will receive some of the fee taken by Lifetime Legal to compensate for its role in the provision of these checks.