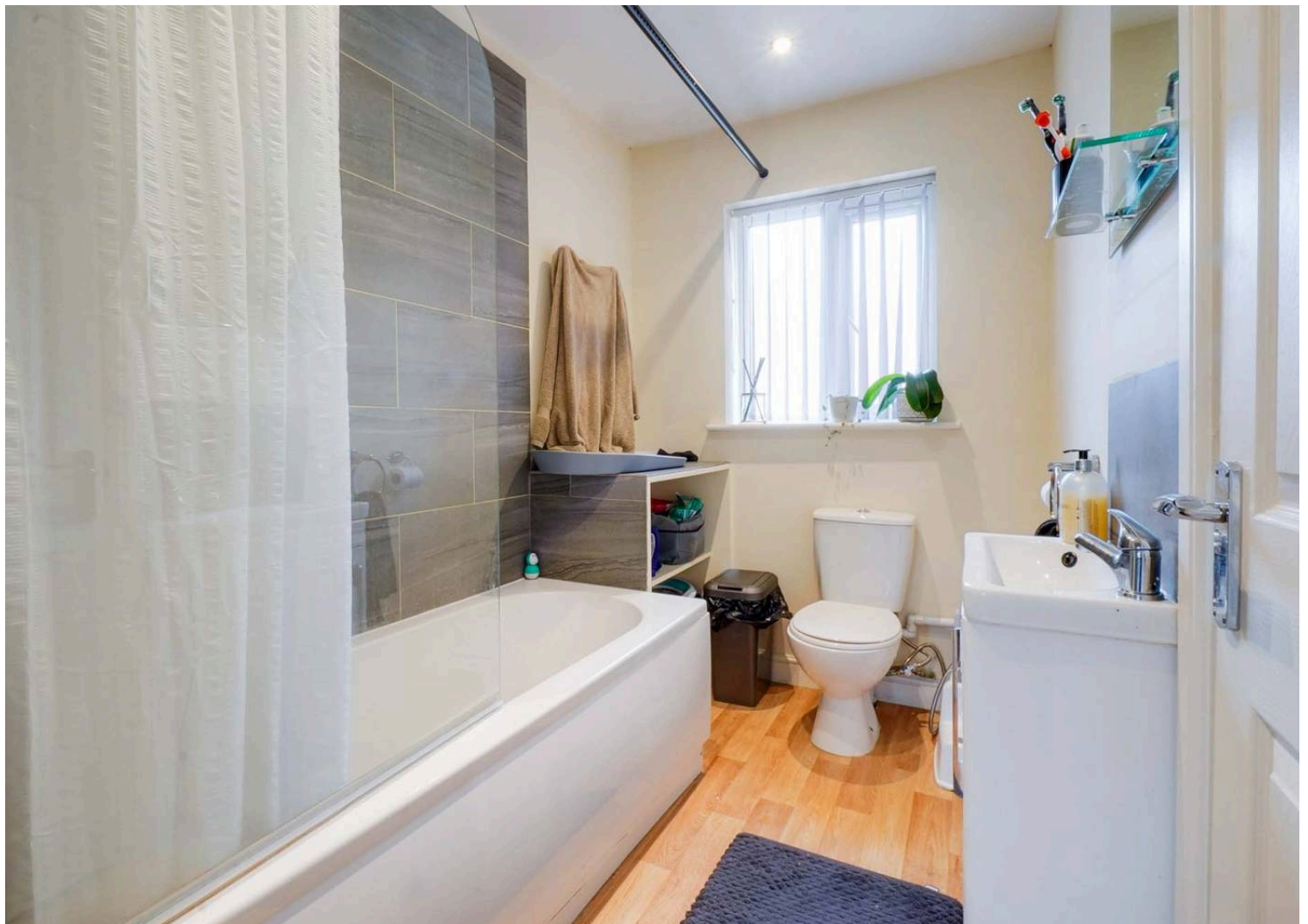


Lobbs Wood Close, Humberstone

£1,250 pcm

A lovely DETACHED BUNGALOW located in the heart of the East Leicester suburb of Humberstone with a modern style FITTED DINING KITCHEN and THREE bedrooms.







SIZES AND DIMENSIONS ARE APPROXIMATE, ACTUAL MAY VARY.





The property is situated within easy reach of nearby schooling and a range of everyday amenities along nearby Uppingham Road or Tesco superstore in nearby Hamilton. Nearly bus links are also within reach running to and from Leicester City Centre with its professional quarters and train station.

Council Tax band: C

Tenure: Freehold

EPC Energy Efficiency Rating: B

We'll keep you moving...



We must inform all prospective purchasers that the measurements are taken by an electronic take and are provided as a guide only and they should not be used as accurate measurements. We have not tested any mains services, gas or electric appliances, or fixtures and fittings mentioned in these details, therefore, prospective purchasers should satisfy themselves before committing to purchase. Intending purchasers must satisfy themselves by inspection or otherwise to the correctness of the statements contained in these particulars. Knightsbridge Estate Agents (nor any person in their employment) has any authority to make any representation or warranty in relation to the property. The floor plans are not to scale, and are intended for use as a guide to the layout of the property only. They should not be used for any other purpose. We are required by law to conduct anti-money laundering checks on all those selling or buying a property. Whilst we retain responsibility for ensuring checks and any ongoing monitoring are carried out correctly, the initial checks are carried out on our behalf by Lifetime Legal who will contact you once you have agreed to instruct us in your sale or had an offer accepted on a property you wish to buy. The cost of these checks is £60 (incl. VAT), which covers the cost of obtaining relevant data and any manual checks and monitoring which might be required. This fee will need to be paid by you in advance of us publishing your property (in the case of a vendor) or issuing a memorandum of sale (in the case of a buyer), directly to Lifetime Legal, and is non-refundable. We will receive some of the fee taken by Lifetime Legal to compensate for its role in the provision of these checks.