



Mere Road, Highfields

£270,000

A STYLISHLY PRESENTED period mid terrace property featuring a LOFT CONVERSION providing a third double bedroom. Ideal family home with a rear courtyard style garden.

Council Tax band: A

Tenure: Freehold

EPC Energy Efficiency Rating: D



Knightsbridge
Estate Agents

0116 274 5544





Reception Room One

11' 6" x 10' 9" (3.51m x 3.28m)

With double glazed window to the front elevation, built-in cupboards and glass display cabinets, shelving, meter cupboard, radiator.

Reception Room Two

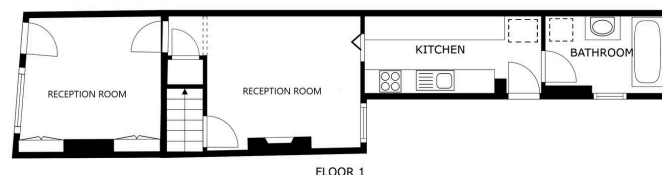
12' 5" x 10' 8" (3.78m x 3.25m)

With double glazed window to the rear elevation, electric fire, TV point, stairs to first floor with under stairs storage cupboard, radiator.

Kitchen

14' 3" x 5' 8" (4.34m x 1.73m)

With double glazed window to the side elevation, multi-fuel cooker point with stainless steel chimney hood over, stainless steel sink and drainer unit with a range of wall and base units with with surfaces over, plumbing for washing machine, wall mounted boiler, double glazed door to the side elevation.



SIZES AND DIMENSIONS ARE APPROXIMATE, ACTUAL MAY VARY.

Matterport

Ground Floor Bathroom

9' 2" x 5' 5" (2.79m x 1.65m)

With double glazed window to the side elevation, bath with mixer tap shower attachment, low-level WC, wash hand basin, tiled walls, tiled floor, heated towel rail.

First Floor Landing

With radiator, stairs to second floor.

Bedroom One

11' 4" x 10' 9" (3.45m x 3.28m)

With double glazed window to the front elevation, wardrobes, laminate floor, radiator.

Bedroom Two

12' 5" x 7' 9" (3.78m x 2.36m)

With double glazed window to the rear elevation, built-in cupboard, laminate floor, radiator.

Shower Room

10' 4" x 5' 9" (3.15m x 1.75m)

With double glazed window to the rear elevation, double tiled shower cubicle with overhead rain forest shower and hand held shower, low-level WC, wash hand basin, tiled walls, tiled floor, heated towel rail.

Second Floor

Providing access to loft conversion.

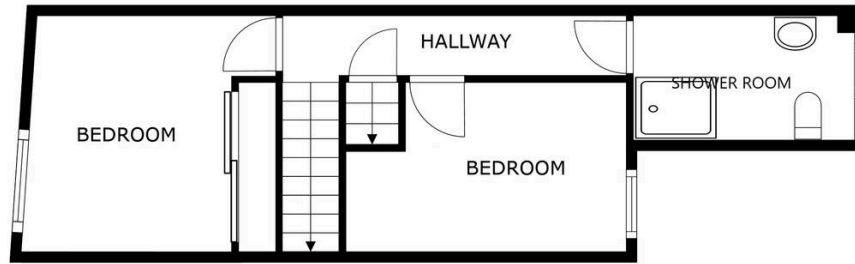
Loft Conversion Providing Bedroom Three

16' 9" x 9' 5" (5.11m x 2.87m)

With skylight window to the rear elevation, eaves storage cupboards, radiator.

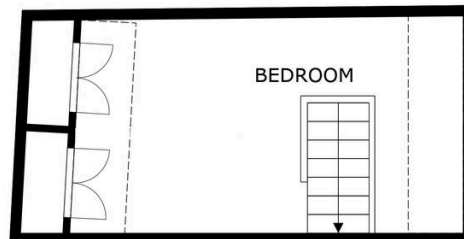
Garden

With covered side lobby, shed, gate to courtyard style rear garden, gate to side access.



FLOOR 2

SIZES AND DIMENSIONS ARE APPROXIMATE, ACTUAL MAY VARY.



FLOOR 3

SIZES AND DIMENSIONS ARE APPROXIMATE, ACTUAL MAY VARY.



We'll keep you moving...



We must inform all prospective purchasers that the measurements are taken by an electronic take and are provided as a guide only and they should not be used as accurate measurements. We have not tested any mains services, gas or electric appliances, or fixtures and fittings mentioned in these details, therefore, prospective purchasers should satisfy themselves before committing to purchase. Intending purchasers must satisfy themselves by inspection or otherwise to the correctness of the statements contained in these particulars. Knightsbridge Estate Agents (nor any person in their employment) has any authority to make any representation or warranty in relation to the property. The floor plans are not to scale, and are intended for use as a guide to the layout of the property only. They should not be used for any other purpose. We are required by law to conduct anti-money laundering checks on all those selling or buying a property. Whilst we retain responsibility for ensuring checks and any ongoing monitoring are carried out correctly, the initial checks are carried out on our behalf by Lifetime Legal who will contact you once you have agreed to instruct us in your sale or had an offer accepted on a property you wish to buy. The cost of these checks is £60 (incl. VAT), which covers the cost of obtaining relevant data and any manual checks and monitoring which might be required. This fee will need to be paid by you in advance of us publishing your property (in the case of a vendor) or issuing a memorandum of sale (in the case of a buyer), directly to Lifetime Legal, and is non-refundable. We will receive some of the fee taken by Lifetime Legal to compensate for its role in the provision of these checks.