

Lyndhurst Court, Stoneygate

In Excess of £150,000

Offered with NO UPWARD CHAIN is this first floor (of 6 floors) flat waiting ready for you featuring TWO DOUBLE BEDROOMS. Need parking? This home comes with garaging situated in a block.

Council Tax band: B

Tenure: Leasehold

EPC Energy Efficiency Rating: C



0116 274 5544





Entrance Hall

With fitted storage cupboard, carpet floor, radiator.

Shower Room

12' 3" x 9' 5" (3.73m x 2.87m)

With double glazed window to the side elevation, tiled floor, part tiled walls, low-level WC, double shower cubicle, wash hand basin with storage below, mirrored medicine/wall cabinet, wall mounted ladder style towel rail/radiator.

Kitchen

13' 1" x 6' 11" (3.99m x 2.11m)

With double glazed window to the side elevation, wall and base units with work surface over, part tiled walls, vinyl floor, integrated oven and hob with extractor hood over, space for washing machine/dryer, one and half bowl sink and drainer unit, serving hatch to the lounge, radiator.



Lounge

14' 11" x 12' 11" (4.55m x 3.94m)

With double glazed windows to the side and rear elevations, carpet floor, two radiators.

Bedroom One

12' 11" x 11' 11" (3.94m x 3.63m)

Measurement up to wardrobes. With double glazed window to the side elevation, fitted wardrobes, fitted desk, carpet floor, radiator.

Bedroom Two

12' 3" x 8' 11" (3.73m x 2.72m)

With double glazed window to the side elevation, carpet floor, radiator.

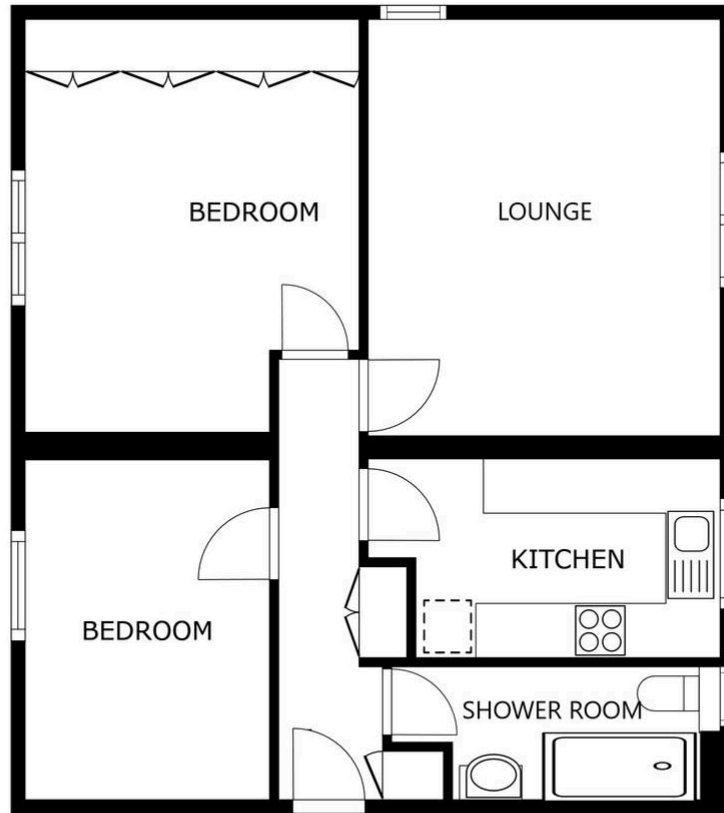
Garage - Situated in a row numbered 5

Off street - Communal parking.

Lease Information

Remaining Years: 137

Service Charge: £943.54 per six months (Jan and July)



FLOOR PLAN

SIZES AND DIMENSIONS ARE APPROXIMATE, ACTUAL MAY VARY.



We'll keep you moving...



We must inform all prospective purchasers that the measurements are taken by an electronic tape and are provided as a guide only and they should not be used as accurate measurements. We have not tested any mains services, gas or electric appliances, or fixtures and fittings mentioned in these details, therefore, prospective purchasers should satisfy themselves before committing to purchase. Intending purchasers must satisfy themselves by inspection or otherwise to the correctness of the statements contained in these particulars. Knightsbridge Estate Agents & valuers (nor any person in their employment) has any authority to make any representation or warranty in relation to the property.' The floor plans are not to scale, and are intended for use as a guide to the layout of the property only. They should not be used for any other purpose. Similarly, the plans are not designed to represent the actual décor found at the property in respect of flooring, wall coverings or fixtures and fittings.