

Alexandra House, Rutland Street, Leicester

£100,000

Located within the CULTURAL QUARTERS of Leicester opposite the Curve theatre, this THIRD FLOOR FLAT is available with NO CHAIN. Featuring an open plan living fitted dining room in excess of 32ft.

Council Tax band: B

Tenure: Leasehold

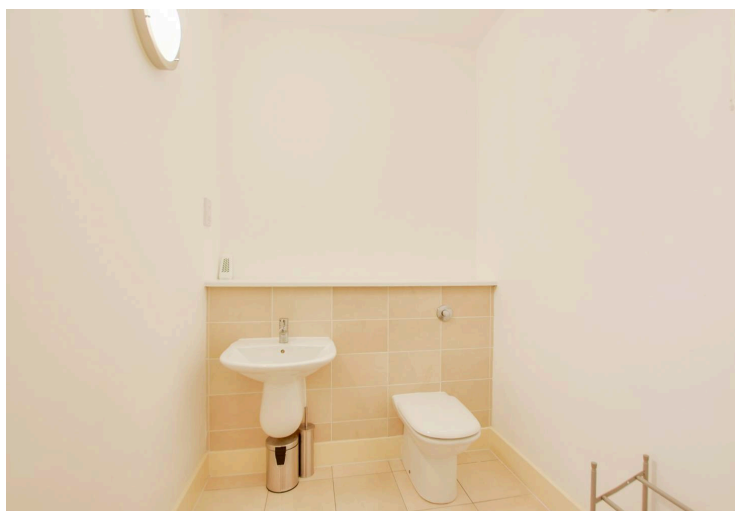
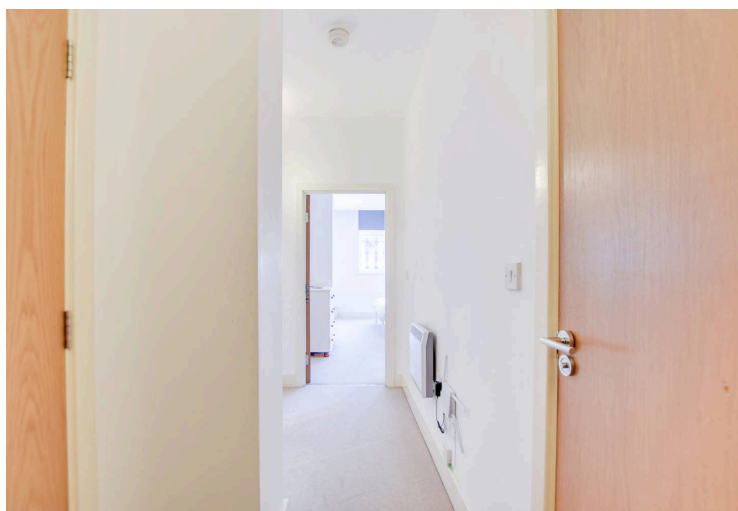
EPC Energy Efficiency Rating: C



Knightsbridge
Estate Agents

0116 274 5544





Entrance Hall

With storage cupboard, wall heater.

Cloaks/WC

6' 6" x 5' 7" (1.98m x 1.70m)

With low-level WC, wash hand basin, part tiled walls, tiled floor.

Open Plan Living Kitchen Dining Room

32' 3" x 10' 6" (9.83m x 3.20m)

With double glazed window to the front elevation, two wall heaters, kitchen area comprises: one and a half bowl stainless steel sink and drainer unit with a range of wall and base units with work surface over, built-in oven and electric hob with filter hood over, built-in dishwasher, built-in washer dryer, built-in fridge freezer, vinyl floor, lounge dining area with carpet, TV point.



Bedroom

183' 0" x 11' 1" (55.78m x 3.38m)

With double glazed window to the front elevation, mirrored sliding wardrobes, wall heater.

En-Suite Bathroom

7' 6" x 6' 6" (2.29m x 1.98m)

With bath having mixer tap shower attachment, low-level WC, wash hand basin, extractor fan, wall heater.

Communal Grounds

Lease Details

Current Ground Rent: £234.48 per year

Length of Lease: 103 years remaining

Service Charge: £1,348 every 6 months



FLOOR PLAN

SIZES AND DIMENSIONS ARE APPROXIMATE, ACTUAL MAY VARY.



We'll keep you moving...



We must inform all prospective purchasers that the measurements are taken by an electronic tape and are provided as a guide only and they should not be used as accurate measurements. We have not tested any mains services, gas or electric appliances, or fixtures and fittings mentioned in these details, therefore, prospective purchasers should satisfy themselves before committing to purchase. Intending purchasers must satisfy themselves by inspection or otherwise to the correctness of the statements contained in these particulars. Knightsbridge Estate Agents & valuers (nor any person in their employment) has any authority to make any representation or warranty in relation to the property.' The floor plans are not to scale, and are intended for use as a guide to the layout of the property only. They should not be used for any other purpose. Similarly, the plans are not designed to represent the actual décor found at the property in respect of flooring, wall coverings or fixtures and fittings.