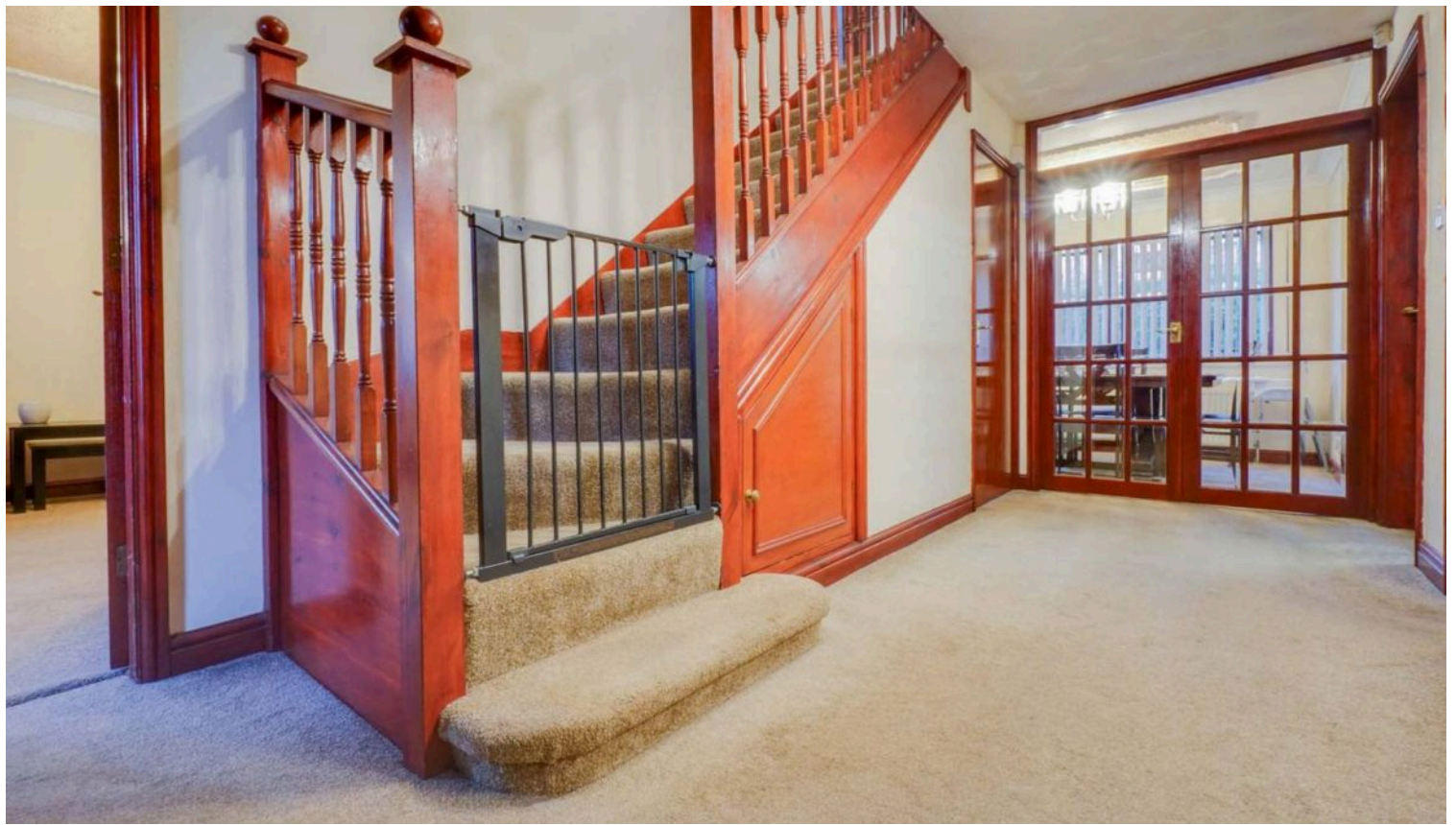


Avenue Road, Stoneygate

£625,000

Impressive 1,700+ sq ft detached home with In-and-Out driveway, 29ft garage, FOUR double bedrooms, 28ft lounge-dining room, low-maintenance garden, and potential for alteration.





Entrance Porch

With internal door to the:

Entrance Hall

With stairs to the first floor and a radiator.

Downstairs WC

2' 6" x 5' 4" (0.76m x 1.63m)

With a WC, wash hand basin, tiled flooring and a heated towel rail.

Family Room

11' 4" x 15' 10" (3.45m x 4.83m)

With a double-glazed window to the front elevation and a radiator.

Open Plan L Shaped Lounge Dining Room

28' 2" x 19' 8" (8.59m x 5.99m)

With a double-glazed window to the front elevation, patio doors and double-glazed window to the rear elevation, TV point and a radiator.

Kitchen

12' 0" x 11' 4" (3.66m x 3.45m)

With a double-glazed window to the rear elevation, a door to the rear elevation, a sink and drainer unit with a range of wall and base units with work surfaces over, an oven, a gas hob, plumbing for a washing machine and a radiator.





First Floor Landing

With a double-glazed window to the front elevation, potential room for a study area, loft access and a radiator.

Bedroom One

16' 0" x 11' 0" (4.88m x 3.35m)

With a double-glazed window to the front and side elevations and a radiator.

En-Suite

7' 5" x 3' 2" (2.26m x 0.97m)

With tiled shower cubicle with electric shower, WC, wash hand basin, extractor fan and a heated towel rail.

Bedroom Two

16' 0" x 11' 5" (4.88m x 3.48m)

With a double-glazed windows to the front and side elevation and a radiator.

Bedroom Three

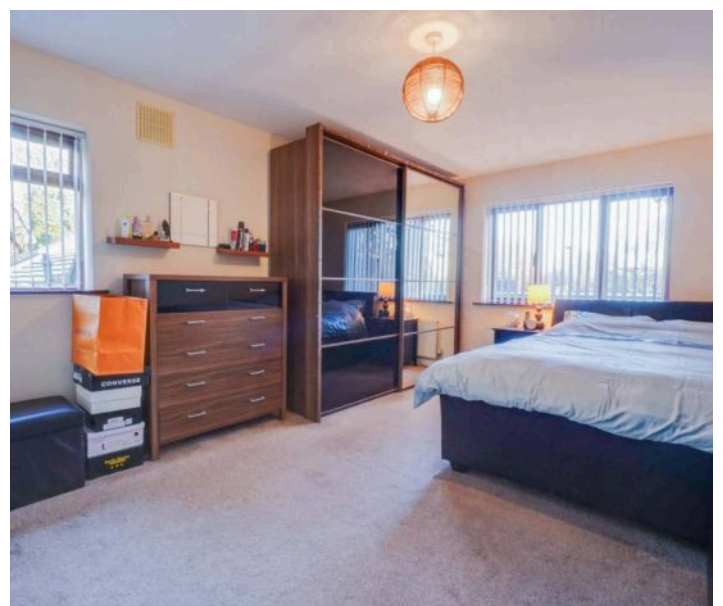
12' 0" x 11' 4" (3.66m x 3.45m)

With a double-glazed window to the rear elevation and a radiator.

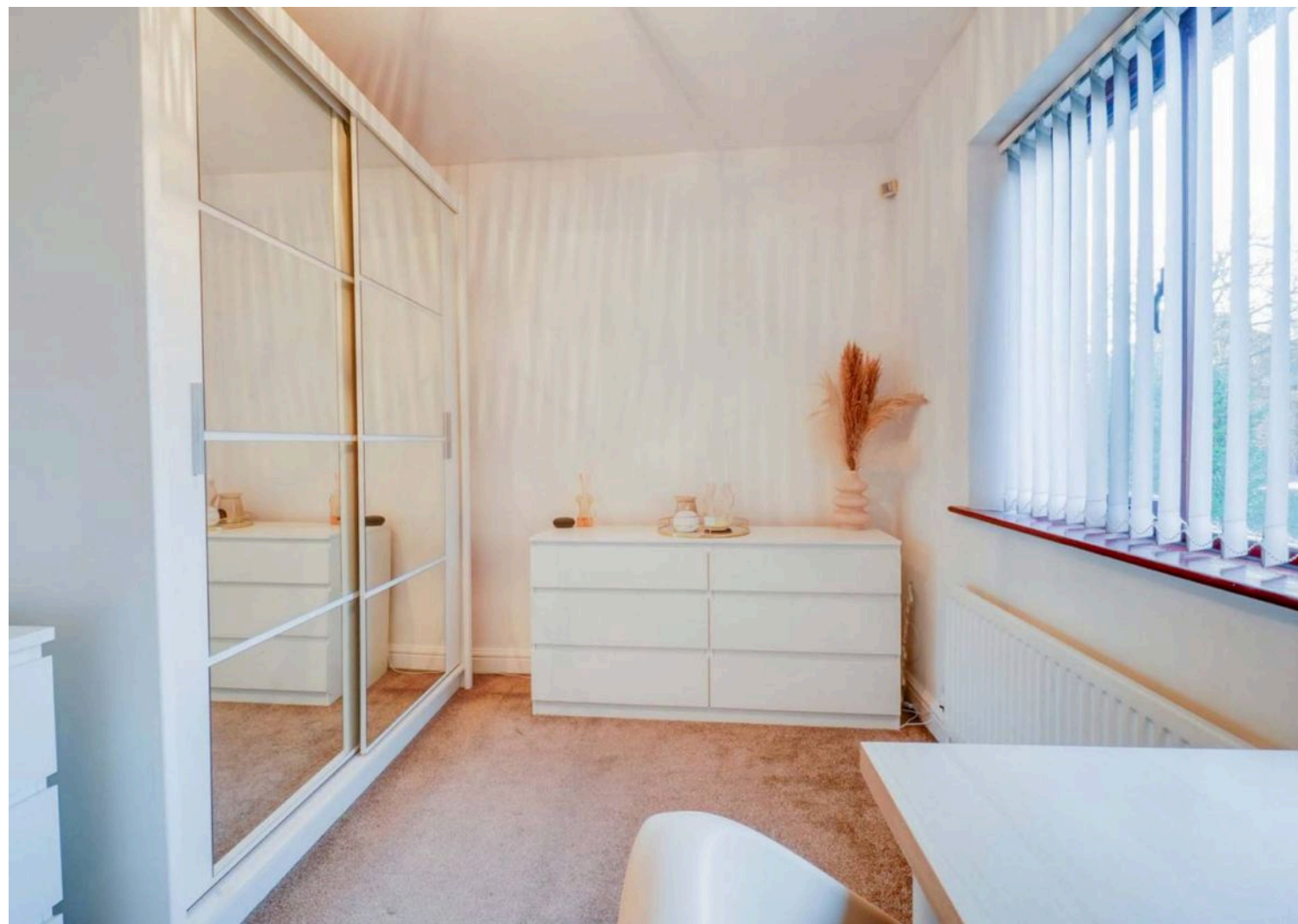
Bedroom Four

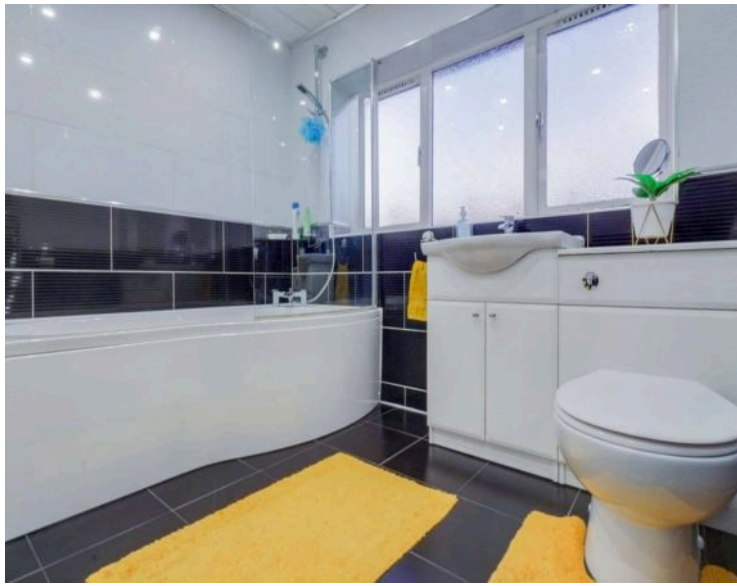
11' 0" x 8' 2" (3.35m x 2.49m)

With a double-glazed window to the rear elevation and a radiator.









Bathroom

8' 2" x 8' 0" (2.49m x 2.44m)

With a double-glazed window to the rear elevation, WC, bath, wash hand basin, tiled walls, tiled flooring and a heated chrome towel rail.

Front Garden

With a walled front with in and out gated access.

Rear Garden

With a paved patio seating area, Astro turf garden, fencing to the perimeter, shed and gate to the side access.

Driveway

A gravelled driveway for approx 4 cars.

Garage

21' x 8'7" with fold open door to the front elevation, door to the rear elevation, power and lighting.



FLOOR 1

SIZES AND DIMENSIONS ARE APPROXIMATE, ACTUAL MAY VARY.



FLOOR 2

SIZES AND DIMENSIONS ARE APPROXIMATE, ACTUAL MAY VARY.





The property is well located for everyday amenities and services, including local public and private schooling together with nursery day-care, Leicester City Centre and the University of Leicester, Leicester Royal Infirmary and Leicester General Hospital. Within a short distance you'll find Victoria Park together with shopping parades in both Stoneygate and neighbouring Clarendon Park with their specialist shops, bars, boutiques and restaurants.

Council Tax band: F

Tenure: Freehold

EPC Energy Efficiency Rating: C

We'll keep you moving...



We must inform all prospective purchasers that the measurements are taken by an electronic take and are provided as a guide only and they should not be used as accurate measurements. We have not tested any mains services, gas or electric appliances, or fixtures and fittings mentioned in these details, therefore, prospective purchasers should satisfy themselves before committing to purchase. Intending purchasers must satisfy themselves by inspection or otherwise to the correctness of the statements contained in these particulars. Knightsbridge Estate Agents (nor any person in their employment) has any authority to make any representation or warranty in relation to the property. The floor plans are not to scale, and are intended for use as a guide to the layout of the property only. They should not be used for any other purpose. We are required by law to conduct anti-money laundering checks on all those selling or buying a property. Whilst we retain responsibility for ensuring checks and any ongoing monitoring are carried out correctly, the initial checks are carried out on our behalf by Lifetime Legal who will contact you once you have agreed to instruct us in your sale or had an offer accepted on a property you wish to buy. The cost of these checks is £60 (incl. VAT), which covers the cost of obtaining relevant data and any manual checks and monitoring which might be required. This fee will need to be paid by you in advance of us publishing your property (in the case of a vendor) or issuing a memorandum of sale (in the case of a buyer), directly to Lifetime Legal, and is non-refundable. We will receive some of the fee taken by Lifetime Legal to compensate for its role in the provision of these checks.