



Evington Road, Evington

£350,000

A THREE BEDROOM traditional semi-detached home providing WELL PROPORTIONED accommodation with SCOPE FOR EXTENSION to the side or rear, subject to relevant planning permissions.

Council Tax band: B

Tenure: Freehold

EPC Energy Efficiency Rating: C



Knightsbridge
Estate Agents

0116 274 5544





Entrance Porch

With internal door to entrance hall.

Entrance Hall

With stairs to first floor, radiator.

Reception Room One 13' 11" x 13' 2" (4.24m x 4.01m)

With double glazed window to the front elevation, gas fire, TV point, radiator.

Reception Room Two 10' 9" x 10' 4" (3.28m x 3.15m)

With patio doors to the rear elevation, radiator.

Kitchen 13' 6" x 8' 6" (4.11m x 2.59m)

With double glazed window to the rear elevation, double glazed door to the side elevation, stainless steel sink and drainer unit with a range of wall and base units with work surfaces over, gas cooker point, plumbing for washing machine, meter cupboard, pantry, wall mounted boiler, tiled floor.



First Floor Landing

With window to the side elevation, loft access.

Bedroom One 14' 0" x 11' 0" (4.27m x 3.35m)

With double glazed window to the front elevation, radiator.

Bedroom Two

11' 0" x 10' 5" (3.35m x 3.18m)

With double glazed window to the rear elevation, radiator.

Bedroom Three

8' 7" x 7' 2" (2.62m x 2.18m)

With double glazed window to the front elevation, radiator.

Bathroom

5' 9" x 5' 7" (1.75m x 1.70m)

With double glazed window to the rear elevation, bath with electric shower over, pedestal wash hand basin, radiator.

Separate WC

5' 7" x 2' 5" (1.70m x 0.74m)

With double glazed window to the rear elevation, low-level WC.

Front Garden

Paved front garden with inset shrubs.

Rear Garden

A mainly lawn rear garden with paved patio area, paved pathway, inset shrubs, store, fencing to perimeter, rear access to garage.

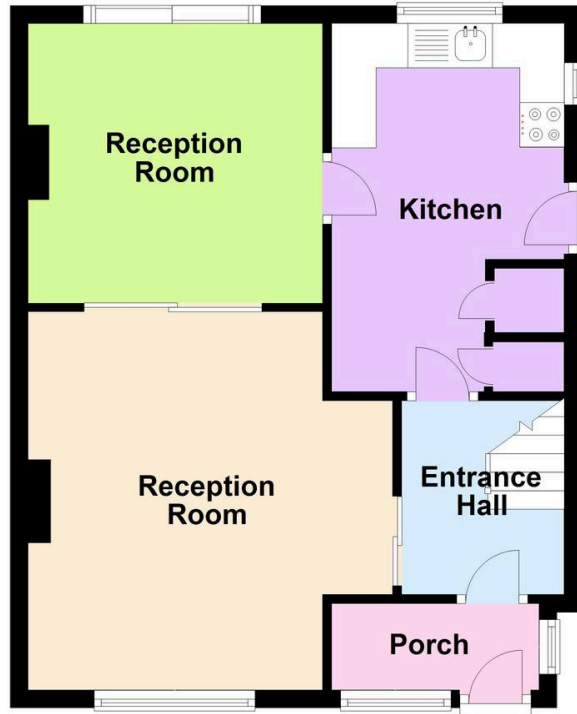
Parking

Driveway providing off road parking.

Garage

Measuring 16' x 8'2". With fold open doors to the front elevation.

Ground Floor



This Floor Plan and the Measurements are a guide Only.
Plan produced using PlanUp.

First Floor



We'll keep you moving...



We must inform all prospective purchasers that the measurements are taken by an electronic take and are provided as a guide only and they should not be used as accurate measurements. We have not tested any mains services, gas or electric appliances, or fixtures and fittings mentioned in these details, therefore, prospective purchasers should satisfy themselves before committing to purchase. Intending purchasers must satisfy themselves by inspection or otherwise to the correctness of the statements contained in these particulars. Knightsbridge Estate Agents (nor any person in their employment) has any authority to make any representation or warranty in relation to the property. The floor plans are not to scale, and are intended for use as a guide to the layout of the property only. They should not be used for any other purpose. We are required by law to conduct anti-money laundering checks on all those selling or buying a property. Whilst we retain responsibility for ensuring checks and any ongoing monitoring are carried out correctly, the initial checks are carried out on our behalf by Lifetime Legal who will contact you once you have agreed to instruct us in your sale or had an offer accepted on a property you wish to buy. The cost of these checks is £60 (incl. VAT), which covers the cost of obtaining relevant data and any manual checks and monitoring which might be required. This fee will need to be paid by you in advance of us publishing your property (in the case of a vendor) or issuing a memorandum of sale (in the case of a buyer), directly to Lifetime Legal, and is non-refundable. We will receive some of the fee taken by Lifetime Legal to compensate for its role in the provision of these checks.