

Walton Street, Off Narborough Road

In Excess of £155,000

A two bedroom end terrace property offered for sale with NO UPWARD CHAIN. REQUIRING RENOVATION and decoration, this would make an ideal investment opportunity with potential to extend to the rear of the home, subject to relevant planning permissions.

Council Tax band: A

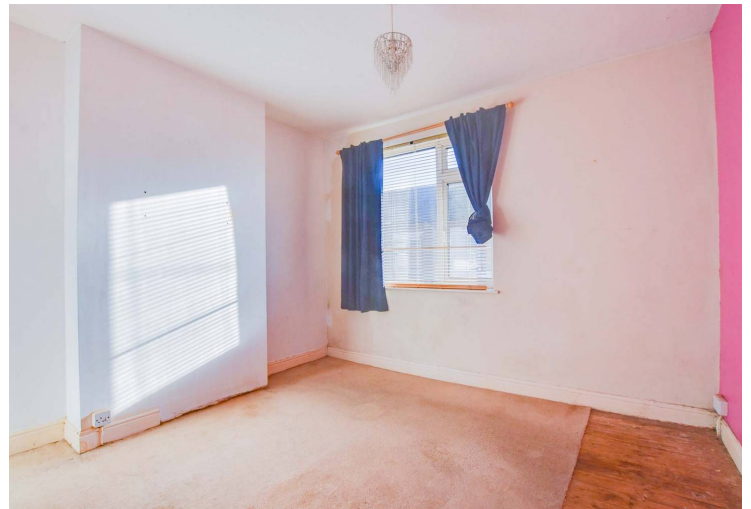
Tenure: Freehold

EPC Energy Efficiency Rating: E



0116 274 5544





Through Lounge Dining Room

27' 4" x 11' 3" (8.33m x 3.43m)

With double glazed windows to the front and rear elevations, meter cupboard, radiator.

Kitchen

11' 10" x 6' 1" (3.61m x 1.85m)

With double glazed window and door to the side elevation, sink and drainer unit, cooker point, wall and base units with work surface over, part tiled walls, tiled floor, radiator.

First Floor Landing

With loft access.

Bedroom One

11' 5" x 11' 3" (3.48m x 3.43m)

With double glazed window to the front elevation, radiator.



Bedroom Two

12' 0" x 8' 5" (3.66m x 2.57m)

With double glazed window to the rear elevation, built-in cupboard, radiator.

Bathroom

11' 9" x 6' 5" (3.58m x 1.96m)

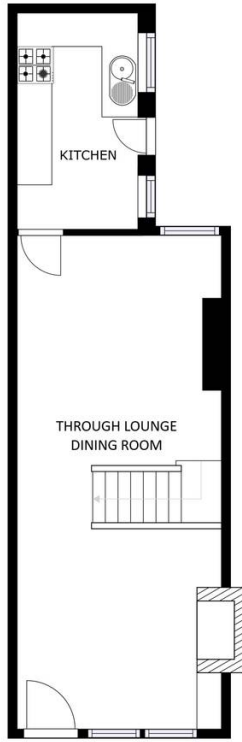
With double glazed window to the rear elevation, low-level WC, wash hand basin, bath with shower over, cupboard housing boiler, radiator.

Rear Garden

Paved rear garden with mature shrubs, walled perimeter, gate to rear access.

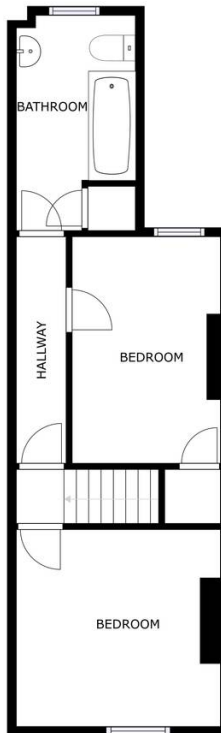
Parking

On street permit parking.



FLOOR 1

SIZES AND DIMENSIONS ARE APPROXIMATE, ACTUAL MAY VARY.



FLOOR 2

SIZES AND DIMENSIONS ARE APPROXIMATE, ACTUAL MAY VARY.



We'll keep you moving...



We must inform all prospective purchasers that the measurements are taken by an electronic take and are provided as a guide only and they should not be used as accurate measurements. We have not tested any mains services, gas or electric appliances, or fixtures and fittings mentioned in these details, therefore, prospective purchasers should satisfy themselves before committing to purchase. Intending purchasers must satisfy themselves by inspection or otherwise to the correctness of the statements contained in these particulars. Knightsbridge Estate Agents (nor any person in their employment) has any authority to make any representation or warranty in relation to the property. The floor plans are not to scale, and are intended for use as a guide to the layout of the property only. They should not be used for any other purpose. We are required by law to conduct anti-money laundering checks on all those selling or buying a property. Whilst we retain responsibility for ensuring checks and any ongoing monitoring are carried out correctly, the initial checks are carried out on our behalf by Lifetime Legal who will contact you once you have agreed to instruct us in your sale or had an offer accepted on a property you wish to buy. The cost of these checks is £60 (incl. VAT), which covers the cost of obtaining relevant data and any manual checks and monitoring which might be required. This fee will need to be paid by you in advance of us publishing your property (in the case of a vendor) or issuing a memorandum of sale (in the case of a buyer), directly to Lifetime Legal, and is non-refundable. We will receive some of the fee taken by Lifetime Legal to compensate for its role in the provision of these checks.