



Cowper Street, Knighton Fields

£130,000

Presenting a stunning ONE-BEDROOM apartment in the beautiful WHEATSHEAF WORKS BUILDING.

Council Tax band: B

Tenure: Leasehold

EPC Energy Efficiency Rating: C





Entrance Hall

With storage cupboard.

Living Room Area

14' 11" x 12' 4" (4.56m x 3.77m)

A spacious open living room area with a radiator and open aspect to:

Kitchen

14' 3" x 7' 11" (4.34m x 2.41m)

With tiled flooring, a range of base and wall kitchen units with sink and drainer, integrated electric oven and hob, a breakfast bar, double glazed window to the rear elevation, radiator and a door providing access to the private garden area/steps to the main street.



Bedroom

10' 8" x 10' 4" (3.25m x 3.15m)

With a glazed window to the rear elevation, a built-in wardrobe and a radiator.

Hallway

Where there is a storage cupboard with space for a washing machine and a storage cupboard housing an electric boiler.

Bathroom

With a bath with shower over, glass shower screen, wash hand basin, and WC.

Garden

A private decked area with steps leading to a padlocked gate that allows you access to the main street (giving you independent access to the property without having to use the communal entrance). There is also an attractive large communal courtyard area that is landscaped.

Allocated Parking

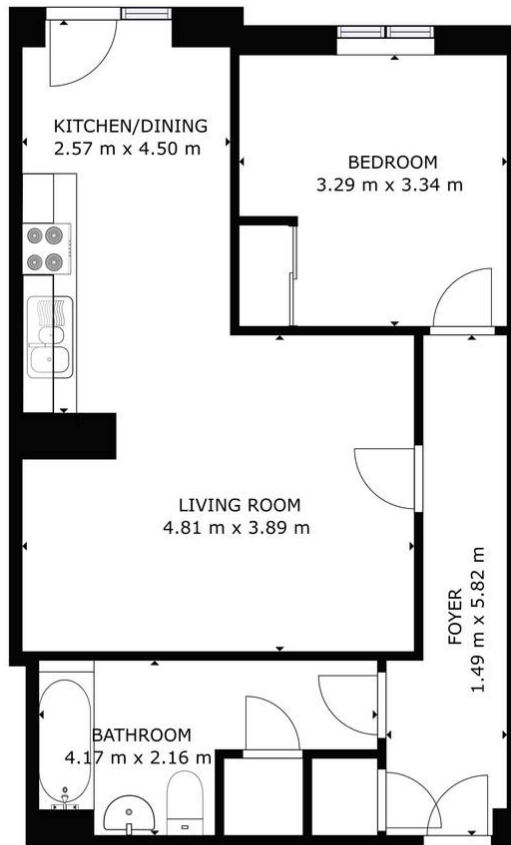
1 Allocated parking space in the secure garage.

Lease Information

Remaining Lease - 116 Years

Service Charge - £2372 per year

Ground Rent £150 Per Year



GROSS INTERNAL AREA
 GROUND FLOOR: 58.37 m²
 TOTAL: 58.37 m²
 SIZES AND DIMENSIONS ARE APPROXIMATE, ACTUAL MAY VARY.



We'll keep you moving...



We must inform all prospective purchasers that the measurements are taken by an electronic tape and are provided as a guide only and they should not be used as accurate measurements. We have not tested any mains services, gas or electric appliances, or fixtures and fittings mentioned in these details, therefore, prospective purchasers should satisfy themselves before committing to purchase. Intending purchasers must satisfy themselves by inspection or otherwise to the correctness of the statements contained in these particulars. Knightsbridge Estate Agents & valuers (nor any person in their employment) has any authority to make any representation or warranty in relation to the property. The floor plans are not to scale, and are intended for use as a guide to the layout of the property only. They should not be used for any other purpose. Similarly, the plans are not designed to represent the actual décor found at the property in respect of flooring, wall coverings or fixtures and fittings.