

Lyndwood Court, Stoneygate

£125,000

A fifth-floor apartment in STONEYGATE with two bedrooms, a reception room, communal parking and communal gardens.

Council Tax band: B

Tenure: Leasehold

EPC Energy Efficiency Rating: E

EPC Environmental Impact Rating: E



0116 274 5544





Entrance Hall

With laminate flooring, storage units and a radiator.

Reception Room

21' 1" x 10' 10" (6.43m x 3.30m)

With a double-glazed window to the front elevation, laminate flooring and a radiator.

Kitchen

10' 1" x 8' 0" (3.07m x 2.44m)

With a double-glazed window to the front elevation, a sink and drainer unit with a range of wall and base units with work surfaces over, an oven, an electric hob, space for a fridge freezer, cupboard housing the boiler, plumbing for a washing machine and lino flooring.



Bedroom One

10' 10" x 9' 5" (3.30m x 2.87m)

With a double-glazed window to the side elevation, built-in wardrobes and a radiator.

Bedroom Two

10' 10" x 9' 5" (3.30m x 2.87m)

With a double-glazed window to the front elevation, built-in wardrobes and a radiator.

Bathroom

7' 7" x 6' 5" (2.31m x 1.96m)

With a bath with a shower over, wash hand basin, WC, tiled walls, tiled flooring, mirrored cabinet and a radiator.

Communal Garden

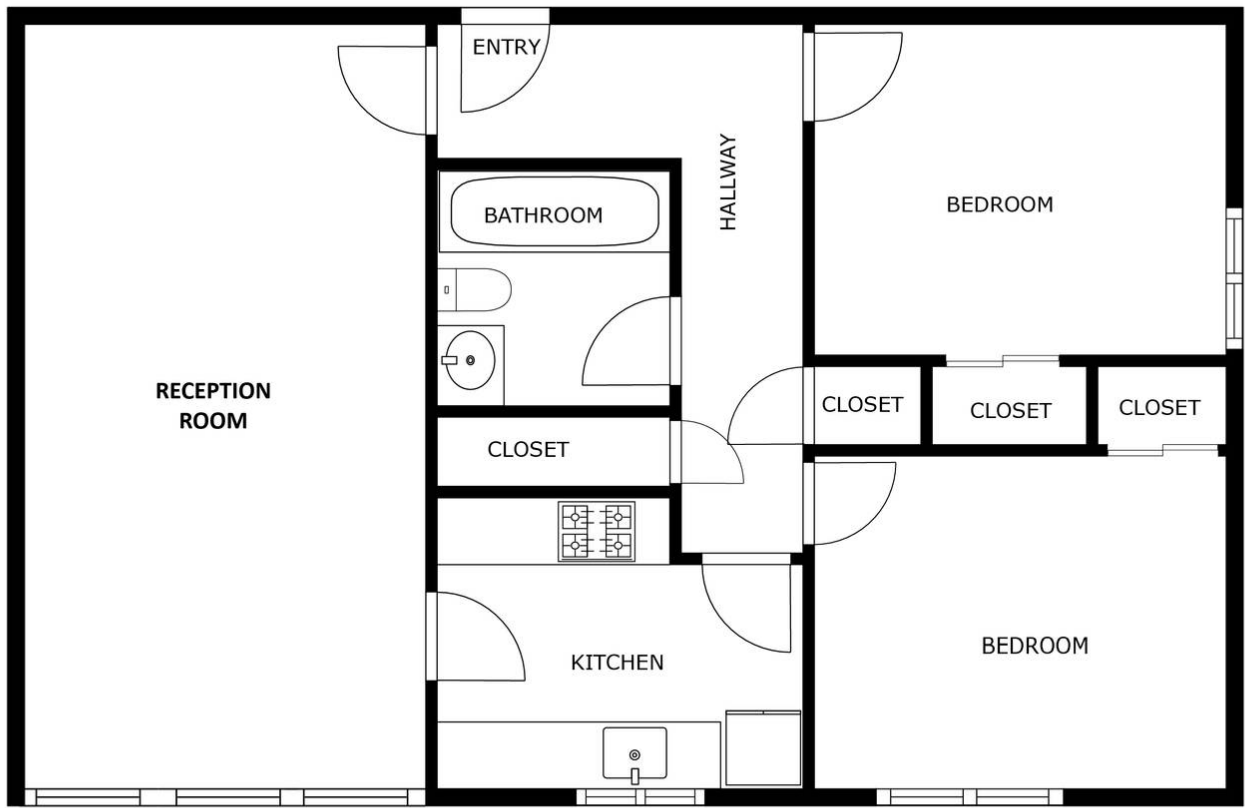
Communal Parking

Lease Information

118 Years Remaining on the lease

£113.00 Per Month - Service Charge

£200.00 Per Year - Ground Rent



FLOOR PLAN

GROSS INTERNAL AREA
 FLOOR PLAN: 796 sq. ft
 SIZES AND DIMENSIONS ARE APPROXIMATE, ACTUAL MAY VARY.



We'll keep you moving...



We must inform all prospective purchasers that the measurements are taken by an electronic tape and are provided as a guide only and they should not be used as accurate measurements. We have not tested any mains services, gas or electric appliances, or fixtures and fittings mentioned in these details, therefore, prospective purchasers should satisfy themselves before committing to purchase. Intending purchasers must satisfy themselves by inspection or otherwise to the correctness of the statements contained in these particulars. Knightsbridge Estate Agents & valuers (nor any person in their employment) has any authority to make any representation or warranty in relation to the property. The floor plans are not to scale, and are intended for use as a guide to the layout of the property only. They should not be used for any other purpose. Similarly, the plans are not designed to represent the actual décor found at the property in respect of flooring, wall coverings or fixtures and fittings.