



## Watkin Road, Freeman Meadow

£170,000

A modern third-floor flat in the desirable Freemans Meadows area, just a short distance from Leicester City Centre. Easily accessible by both stairs and lift, this property offers TWO well-proportioned bedrooms, TWO bathrooms, a PRIVATE BALCONY for outdoor relaxation and ALLOCATED PARKING.

Council Tax band: D

Tenure: Leasehold

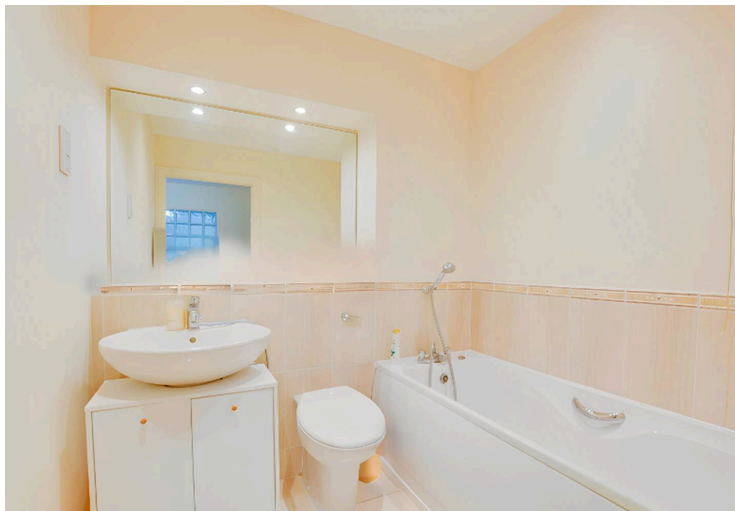
EPC Energy Efficiency Rating: C

EPC Environmental Impact Rating: C



0116 274 5544





### **Communal Entrance Hall**

With stairs or a lift to the second floor.

### **Entrance Hall**

With airing cupboard.

### **Reception Room**

16' 5" x 16' 0" (5.00m x 4.88m)

With a double-glazed patio door to the balcony, a double-glazed window to the rear elevation, Tv point, radiator, open aspect to the:

### **Kitchen**

10' 0" x 8' 2" (3.05m x 2.49m)

a sink and drainer unit with a range of wall and base units with work surfaces over, oven, gas hob, chimney hood over, plumbing for a dishwasher, plumbing for a washing machine and tiled flooring.



### **Bedroom One**

12' 0" x 11' 2" (3.66m x 3.40m)

With double-glazed patio doors to the balcony and a radiator.

### **En-Suite**

7' 9" x 4' 0" (2.36m x 1.22m)

With a tiled shower cubicle with an electric shower over, a wash hand basin, a WC, a mirror and a heated towel rail.

### **Bedroom Two**

12' 3" x 10' 5" (3.73m x 3.18m)

With a double-glazed window to the side elevation and a radiator.

### **Bathroom**

6' 7" x 6' 0" (2.01m x 1.83m)

With a bath with mixer tap shower attachment, WC, wash hand basin, tiled flooring, mirror and a heated towel rail.

### **Balcony**

A private balcony with views of Leicestershire.

### **Communal Garden**

With well maintained communal gardens.

### **Allocated Parking**

One space in a secure under ground garage.

### **Lease Information:**

Year Remaining - 134 Years

Service Charge - £278.00 Per Month

Ground Rent - 250 Per Year



FLOOR 1

GROSS INTERNAL AREA  
TOTAL: 92 m<sup>2</sup>  
SIZES AND DIMENSIONS ARE APPROXIMATE, ACTUAL MAY VARY.



**We'll keep you moving...**



We must inform all prospective purchasers that the measurements are taken by an electronic tape and are provided as a guide only and they should not be used as accurate measurements. We have not tested any mains services, gas or electric appliances, or fixtures and fittings mentioned in these details, therefore, prospective purchasers should satisfy themselves before committing to purchase. Intending purchasers must satisfy themselves by inspection or otherwise to the correctness of the statements contained in these particulars. Knightsbridge Estate Agents & valuers (nor any person in their employment) has any authority to make any representation or warranty in relation to the property. The floor plans are not to scale, and are intended for use as a guide to the layout of the property only. They should not be used for any other purpose. Similarly, the plans are not designed to represent the actual décor found at the property in respect of flooring, wall coverings or fixtures and fittings.