

Portsdown Road, South Knighton

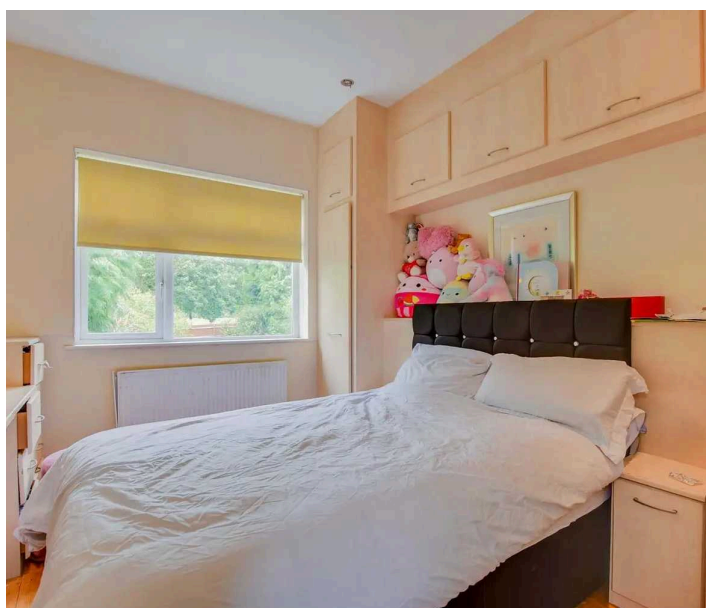
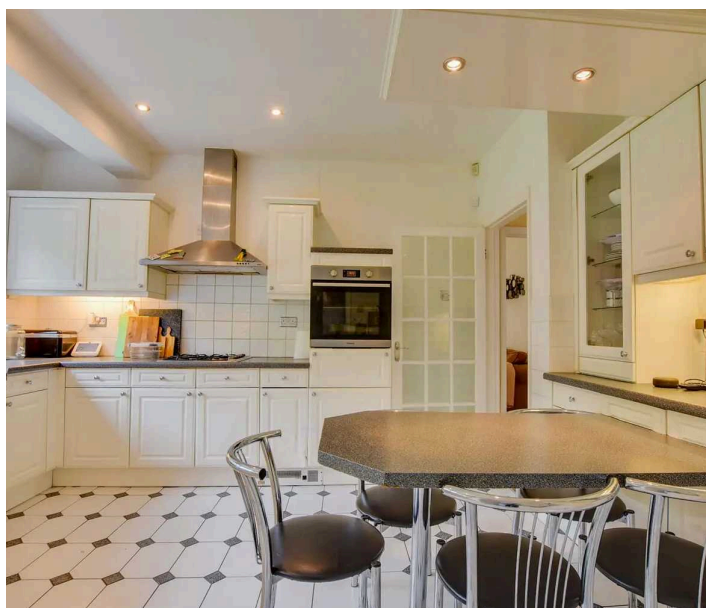
Offers Over £625,000

An EXTENDED traditional detached property located within a CUL-DE-SAC enjoying a pleasant outlook to the rear overlooking Oadby Golf Course. The property retains some ORIGINAL FEATURES with a blend of modern touches along with further SCOPE FOR EXTENSION to the rear, subject to relevant planning.



0116 274 5544





Entrance Porch

Leading to:

Entrance Hall

With stairs to first floor, under stairs storage cupboard, wooden floor, radiator.

Reception Room One

18' 2" x 14' 1" (5.54m x 4.29m)

With double glazed bay window to the front elevation, wooden floor, TV point, radiator.

Reception Room Two

17' 0" x 12' 0" (5.18m x 3.66m)

With double glazed patio door to the rear elevation, gas fire, inset ceiling spotlights, TV point, wooden floor, radiator.

Kitchen Breakfast Room

14' 7" x 13' 4" (4.45m x 4.06m)

With double glazed window to the rear elevation, one and a half bowl stainless steel sink and drainer unit with a range of wall units and display cabinets, base units with work surfaces over, breakfast bar, built-in oven, gas hob with stainless steel chimney hood over, tiled floor, part tiled walls.

Utility Room

11' 0" x 7' 0" (3.35m x 2.13m)

With double glazed door to rear garden, wall mounted boiler, plumbing for washing machine, tiled floor, radiator.



Ground Floor WC

4' 10" x 3' 8" (1.47m x 1.12m)

With low-level WC, wash hand basin, tiled floor, part tiled walls.

First Floor Landing

With loft access having pull down ladder.

Bedroom One

18' 3" x 14' 0" (5.56m x 4.27m)

Measurement into bay window. With double glazed bay window to the front elevation, inset ceiling spotlights, fitted wardrobes, wooden floor, radiator.

Bedroom Two

13' 6" x 12' 0" (4.11m x 3.66m)

With double glazed window to the rear elevation, wooden floor, TV point, radiator.

Bedroom Three

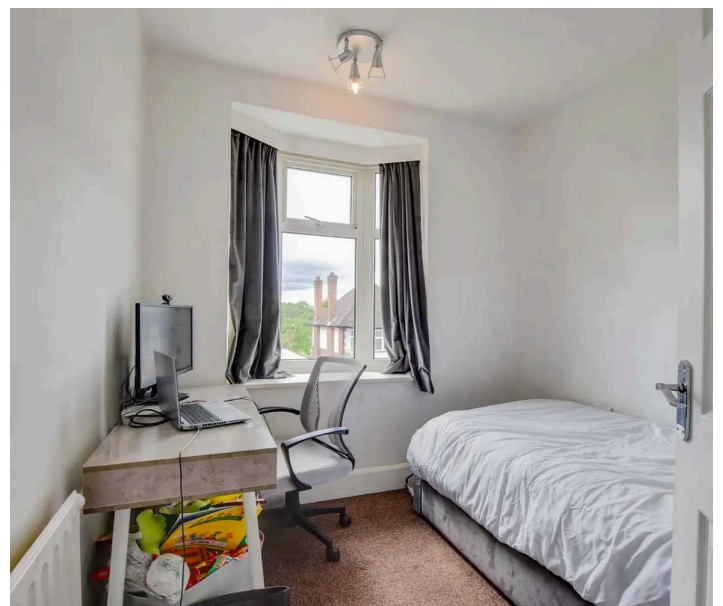
10' 0" x 8' 9" (3.05m x 2.67m)

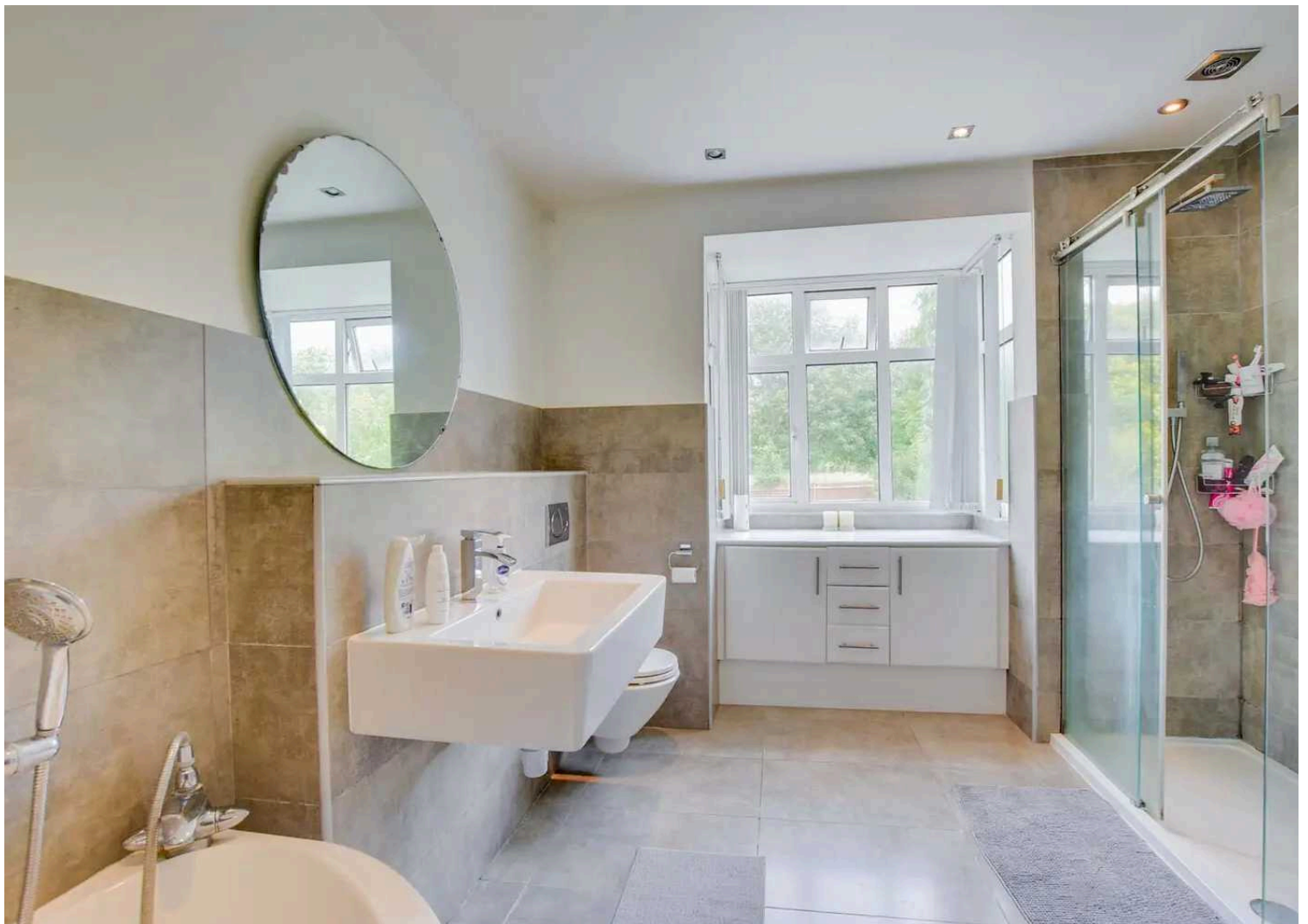
With double glazed bay window to the front elevation, inset ceiling spotlights, wooden floor, radiator.

Bedroom Four

10' 0" x 11' 0" (3.05m x 3.35m)


With double glazed window to the rear elevation, inset ceiling spotlights, fitted wardrobes, radiator.









Energy Efficiency Rating		
	Current	Potential
<i>Very energy efficient - lower running costs</i>		
(92+) A		
(81-91) B		82
(69-80) C		
(55-68) D	63	
(39-54) E		
(21-38) F		
(1-20) G		
<i>Not energy efficient - higher running costs</i>		
England, Scotland & Wales		EU Directive 2002/91/EC 

Bedroom Five

8' 3" x 8' 0" (2.51m x 2.44m)

With double glazed bay window to the front elevation, radiator.

Bathroom

13' 9" x 10' 0" (4.19m x 3.05m)

With double glazed window to the rear elevation, Jacuzzi bath, tiled shower cubicle, low-level WC, wash hand basin, tiled floor, part tiled walls, heated towel rail.

Front Garden

Block paved frontage with shrubs.

Rear Garden

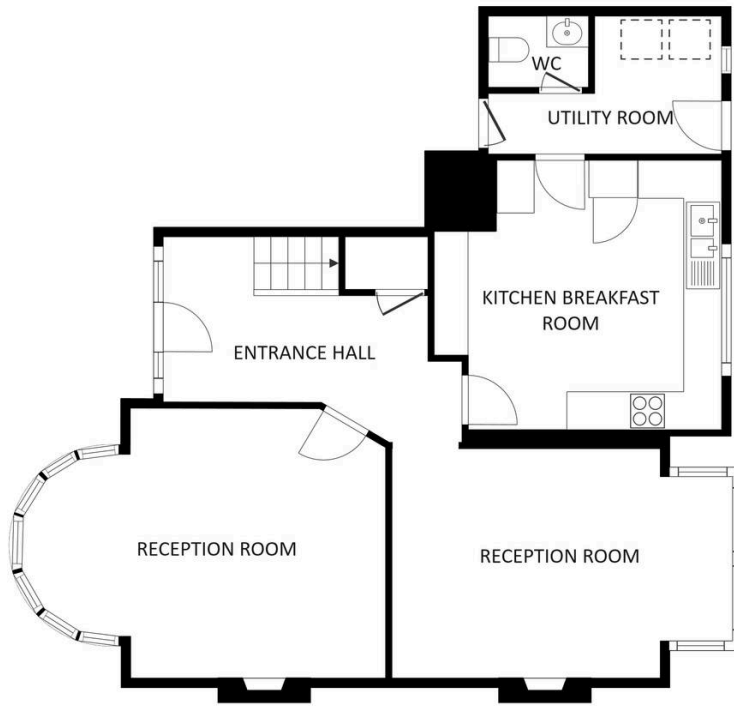
With paved patio area, steps leading to lawn, mature trees, flowerbeds and shrubs, fencing to perimeter.

Driveway

Providing off road parking.

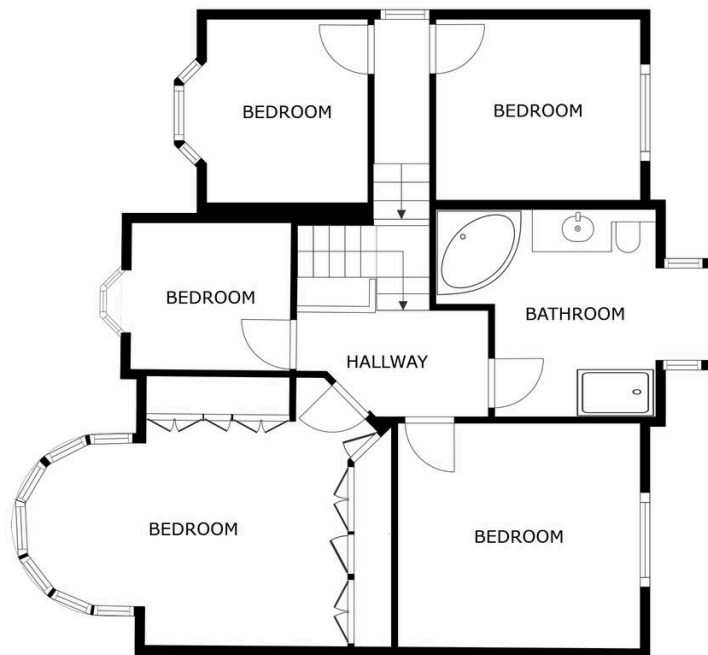
Garage

Measuring 18'4" x 10'1". With electric up and over door to the front elevation, power and lighting.



FLOOR 1

GROSS INTERNAL AREA
 FLOOR 1 903 sq.ft. FLOOR 2 921 sq.ft.
 TOTAL : 1,824 sq.ft.
 SIZES AND DIMENSIONS ARE APPROXIMATE, ACTUAL MAY VARY.



FLOOR 2

GROSS INTERNAL AREA
 FLOOR 1 903 sq.ft. FLOOR 2 921 sq.ft.
 TOTAL : 1,824 sq.ft.
 SIZES AND DIMENSIONS ARE APPROXIMATE, ACTUAL MAY VARY.





The property is well located for everyday amenities and services, including local public and private schooling including Overdale Infant and Junior Schools and nursery day-care, Leicester City Centre and the University of Leicester, Leicester Royal Infirmary and Leicester General Hospital. The property is located close to Knighton Park and Queens Road shopping parade in neighbouring Clarendon Park with its specialist shops, bars, boutiques and restaurants.

Council Tax band: E

Tenure: Freehold

EPC Energy Efficiency Rating: D

We'll keep you moving...



We must inform all prospective purchasers that the measurements are taken by an electronic take and are provided as a guide only and they should not be used as accurate measurements. We have not tested any mains services, gas or electric appliances, or fixtures and fittings mentioned in these details, therefore, prospective purchasers should satisfy themselves before committing to purchase. Intending purchasers must satisfy themselves by inspection or otherwise to the correctness of the statements contained in these particulars. Knightsbridge Estate Agents (nor any person in their employment) has any authority to make any representation or warranty in relation to the property. The floor plans are not to scale, and are intended for use as a guide to the layout of the property only. They should not be used for any other purpose. We are required by law to conduct anti-money laundering checks on all those selling or buying a property. Whilst we retain responsibility for ensuring checks and any ongoing monitoring are carried out correctly, the initial checks are carried out on our behalf by Lifetime Legal who will contact you once you have agreed to instruct us in your sale or had an offer accepted on a property you wish to buy. The cost of these checks is £60 (incl. VAT), which covers the cost of obtaining relevant data and any manual checks and monitoring which might be required. This fee will need to be paid by you in advance of us publishing your property (in the case of a vendor) or issuing a memorandum of sale (in the case of a buyer), directly to Lifetime Legal, and is non-refundable. We will receive some of the fee taken by Lifetime Legal to compensate for its role in the provision of these checks.