

Albert Court, Stoneygate

In Excess of £130,000

IDEAL INVESTMENT or FIRST TIME PURCHASE - One-bedroom first-floor apartment close to local amenities and transport links.

Council Tax band: A

Tenure: Leasehold

EPC Energy Efficiency Rating: C





Entrance Hall

With built-in cupboard, security intercom and a radiator.

Living Room

18' 0" x 11' 3" (5.49m x 3.43m)

With two double-glazed windows to the front elevation, wood effect flooring, TV point, built-in cupboard, radiator and an opening to:

Kitchen

8' 10" x 6' 8" (2.69m x 2.03m)

With a sink and drainer unit with a range of wall and base units with work surfaces over, laminated splashback, four-ring ceramic electric hob with extraction hood over, stainless steel splashback, oven, plumbing for a washing machine and space for a fridge.



Bedroom

16' 6" x 7' 10" (5.03m x 2.39m)

With a double-glazed window to the front elevation, a built-in wardrobe and a radiator.

Bathroom

7' 0" x 5' 5" (2.13m x 1.65m)

With a bath with shower over, shower screen, WC, wash hand basin, tiled splashback and a feature wall mounted chrome radiator.

Communal Garden

Situated within well-maintained and established communal garden.

Parking:

Communal Parking

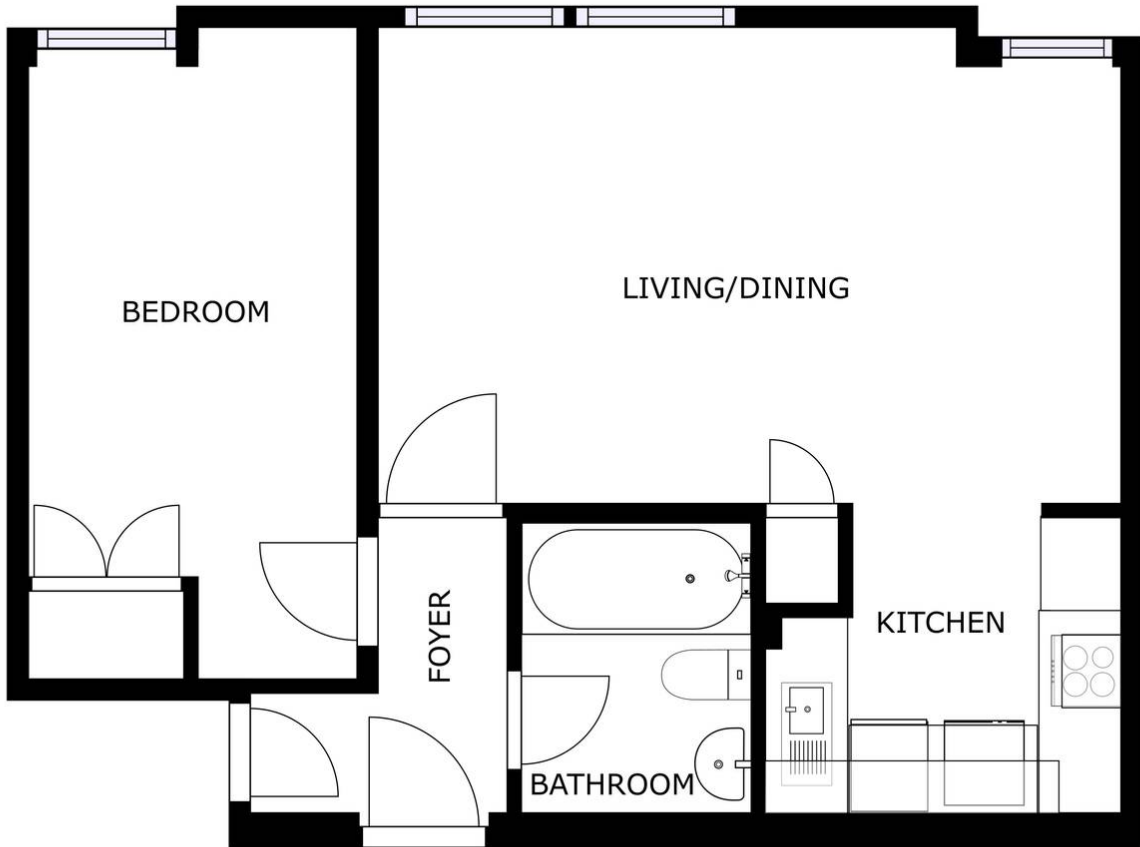
Garage:

For 1 vehicle

Lease Information:

Expiry - 28th September 2107

£1,032 every 6 months including money into the reserve fund or £172 a month but £50 is for maintenance.



GROSS INTERNAL AREA
FLOOR 1: 45.39 m²
TOTAL: 45.39 m²
SIZES AND DIMENSIONS ARE APPROXIMATE, ACTUAL MAY VARY



We'll keep you moving...



We must inform all prospective purchasers that the measurements are taken by an electronic tape and are provided as a guide only and they should not be used as accurate measurements. We have not tested any mains services, gas or electric appliances, or fixtures and fittings mentioned in these details, therefore, prospective purchasers should satisfy themselves before committing to purchase. Intending purchasers must satisfy themselves by inspection or otherwise to the correctness of the statements contained in these particulars. Knightsbridge Estate Agents & valuers (nor any person in their employment) has any authority to make any representation or warranty in relation to the property. The floor plans are not to scale, and are intended for use as a guide to the layout of the property only. They should not be used for any other purpose. Similarly, the plans are not designed to represent the actual décor found at the property in respect of flooring, wall coverings or fixtures and fittings.