



Kimberley Road, Evington

£300,000

A THREE BEDROOM bay fronted period terrace home retaining some ORIGINAL STYLE FEATURES including picture rails, doors and fireplaces with a blend of modern touches. Ideal first time purchase or family home.

Council Tax band: B

Tenure: Freehold

EPC Energy Efficiency Rating: C



0116 274 5544





Entrance Hall

With laminate floor, stairs to first floor, radiator.

Sitting Room

14' 9" x 11' 9" (4.50m x 3.58m)

Measurement into bay window. With double glazed bay window to the front elevation, picture rail, fireplace, TV point, radiator.

Dining Room

13' 0" x 11' 10" (3.96m x 3.61m)

With French doors to the rear elevation, picture rail, under stairs storage cupboard, laminate floor, radiator.



Kitchen
17' 4" x 9' 0" (5.28m x 2.74m)
With two double glazed windows to the side elevation, door to the rear elevation, sink and drainer unit, a range of wall and base units with work surfaces over, built-in oven and five ring gas hob with chimney hood over, plumbing for washing machine, wall mounted boiler, laminate floor, storage cupboard.

First Floor Landing
With loft access.

Bedroom One
14' 2" x 12' 0" (4.32m x 3.66m)
Measurement up to chimney breast. With double glazed window to the front elevation, two fitted wardrobes, radiator.

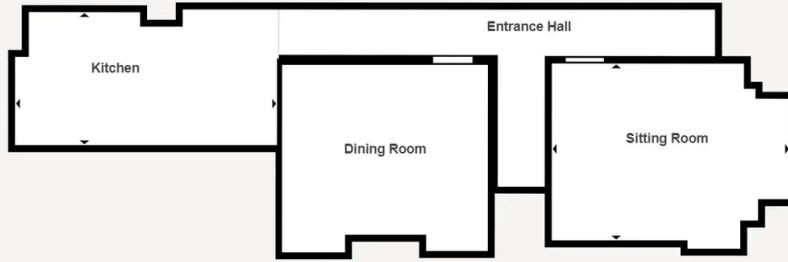
Bedroom Two
12' 4" x 10' 6" (3.76m x 3.20m)
With double glazed window to the rear elevation, wooden floor, original style fireplace, radiator.

Bedroom Three
10' 1" x 9' 0" (3.07m x 2.74m)
With double glazed window to the rear elevation, radiator.

Shower Room
6' 10" x 6' 1" (2.08m x 1.85m)
With double glazed window to the side elevation, double tired shower cubicle, pedestal wash hand basin, low-level WC, radiator.

Front Garden
Front forecourt with walled and iron fencing, hedging providing privacy.

Rear Garden
Paved courtyard style walled rear garden with gate to rear access.



Matterport Property Report:
Kimberley Road
 Indoor Scanned Area - Full Property 1,192 sq. ft. | Floor 1 590 sq. ft.
Sizes and dimensions are approximate, actual may vary

Visit 3D space on
Matterport



Matterport Property Report:
Kimberley Road
 Indoor Scanned Area - Full Property 1,192 sq. ft. | Floor 2 602 sq. ft.
Sizes and dimensions are approximate, actual may vary

Visit 3D space on
Matterport

We'll keep you moving...



We must inform all prospective purchasers that the measurements are taken by an electronic take and are provided as a guide only and they should not be used as accurate measurements. We have not tested any mains services, gas or electric appliances, or fixtures and fittings mentioned in these details, therefore, prospective purchasers should satisfy themselves before committing to purchase. Intending purchasers must satisfy themselves by inspection or otherwise to the correctness of the statements contained in these particulars. Knightsbridge Estate Agents (nor any person in their employment) has any authority to make any representation or warranty in relation to the property. The floor plans are not to scale, and are intended for use as a guide to the layout of the property only. They should not be used for any other purpose. We are required by law to conduct anti-money laundering checks on all those selling or buying a property. Whilst we retain responsibility for ensuring checks and any ongoing monitoring are carried out correctly, the initial checks are carried out on our behalf by Lifetime Legal who will contact you once you have agreed to instruct us in your sale or had an offer accepted on a property you wish to buy. The cost of these checks is £60 (incl. VAT), which covers the cost of obtaining relevant data and any manual checks and monitoring which might be required. This fee will need to be paid by you in advance of us publishing your property (in the case of a vendor) or issuing a memorandum of sale (in the case of a buyer), directly to Lifetime Legal, and is non-refundable. We will receive some of the fee taken by Lifetime Legal to compensate for its role in the provision of these checks.