



Junior Street, City Centre

In Excess of £28,000

A GROUND FLOOR two bedroom apartment located within the ICONIC Chimney building in Leicester City Centre on a 25% SHARED OWNERSHIP basis. Outside you will find communal grounds and communal parking.

Council Tax band: C

Tenure: Leasehold

EPC Energy Efficiency Rating: C



0116 274 5544





Entrance Lobby

With two built-in cupboards.

Entrance Hall

With access to the following rooms:

Open Plan Living Kitchen

21' 6" x 10' 2" (6.55m x 3.10m)

With double glazed window to the front elevation, wood effect floor with under floor heating, media point, power points, kitchen area with a range of wall and base units with work surfaces over, stainless steel sink and drainer, inset four ring gas hob and oven, extractor hood, stainless steel splash back, integrated dishwasher, plumbing for washing machine, space for fridge freezer.

Bedroom One

11' 1" x 10' 0" (3.38m x 3.05m)

With double glazed window to the front elevation, under floor heating.



Bedroom Two

11' 10" x 10' 0" (3.61m x 3.05m)

With double glazed window to the front elevation, under floor heating.

Bathroom

7' 8" x 7' 0" (2.34m x 2.13m)

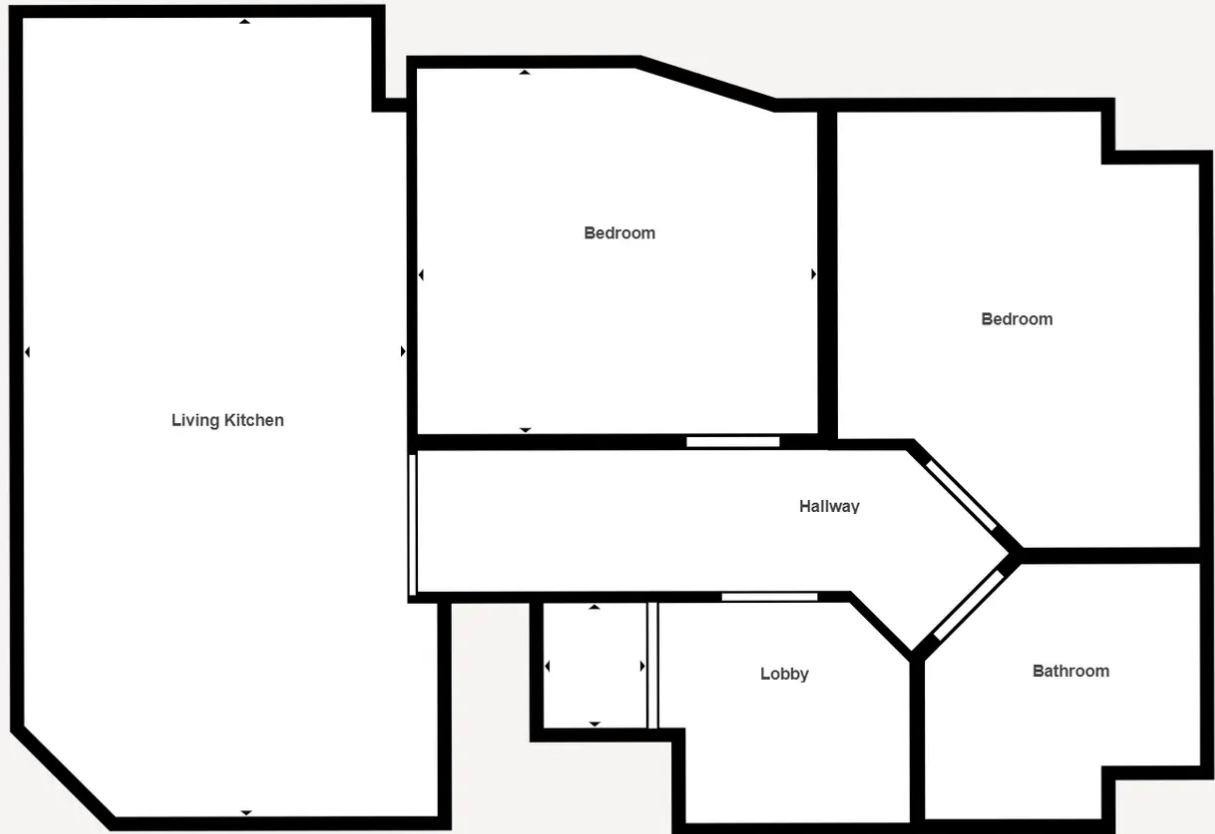
With ceramic tiled floor, tiled walls, bath with shower over, low-level WC, wash hand basin, ladder style towel rail/radiator.

Communal Garden

Situated within communal grounds.

Parking

Communal parking accessed via secure electrically operated gates.



 Matterport Property Report:

Jr Street THE CHIMNEY

Indoor Scanned Area - Full Property 602 sq. ft. | Floor 1 602 sq. ft.

Sizes and dimensions are approximate, actual may vary

Visit 3D space on
 Matterport



We'll keep you moving...



We must inform all prospective purchasers that the measurements are taken by an electronic tape and are provided as a guide only and they should not be used as accurate measurements. We have not tested any mains services, gas or electric appliances, or fixtures and fittings mentioned in these details, therefore, prospective purchasers should satisfy themselves before committing to purchase. Intending purchasers must satisfy themselves by inspection or otherwise to the correctness of the statements contained in these particulars. Knightsbridge Estate Agents & valuers (nor any person in their employment) has any authority to make any representation or warranty in relation to the property. The floor plans are not to scale, and are intended for use as a guide to the layout of the property only. They should not be used for any other purpose. Similarly, the plans are not designed to represent the actual décor found at the property in respect of flooring, wall coverings or fixtures and fittings.