



South Knighton Road, Leicester

Offers Over £325,000

A THREE bedroom home with two reception rooms, kitchen, three bedrooms (master with en-suite), family bathroom and front and rear gardens.

Council Tax band: B

Tenure: Freehold

EPC Energy Efficiency Rating: D



0116 274 5544





Entrance Hall

With stairs to the first-floor landing, dado rail and radiator.

Reception Room One

12' 8" x 11' 10" (3.86m x 3.61m)

With a double-glazed window to the front elevation, living flame effect gas fire with tiled insert and hearth, fire surround, built-in cupboards, built-in shelving, Tv point, coving to the ceiling and a radiator.

Reception Room Two

15' 6" x 11' 10" (4.72m x 3.61m)

With double-glazed French doors to the rear elevation, chimney breast with decorative fireplace, built-in cupboards, shelving, understairs storage cupboard, coving to the ceiling, TV point, dado rail and a radiator.



Kitchen

15' 10" x 7' 8" (4.83m x 2.34m)

With a double-glazed window to the side elevation, a double-glazed door to the rear garden, a double ceramic sink with a range of wall units with under unit lighting, display cabinets and base units with work surfaces over, oven, four-ring gas hob, extractor hood, plumbing for washing machine, space for a fridge freezer, tiled flooring, partly tiled walls and a radiator.

First Floor Landing

With a loft access hatch and a radiator.

Bedroom One

15' 8" x 12' 3" (4.78m x 3.73m)

(narrowing to 8'4") With a double-glazed window to the front elevation, an original-style fire place with a tiled hearth, surround, and a radiator.

En-Suite

6' 0" x 4' 1" (1.83m x 1.24m)

With shower cubicle with electric shower, partly tiled walls, WC, was hand basin, tiled flooring and a radiator.

Bedroom Two

12' 4" x 12' 0" (3.76m x 3.66m)

With a double-glazed window to the rear elevation, original style fireplace with tiled hearth, storage cupboard and a radiator.

Bedroom Three

9' 0" x 8' 0" (2.74m x 2.44m)

With a double-glazed window to the rear elevation and a radiator.

Bathroom

6' 5" x 4' 10" (1.96m x 1.47m)

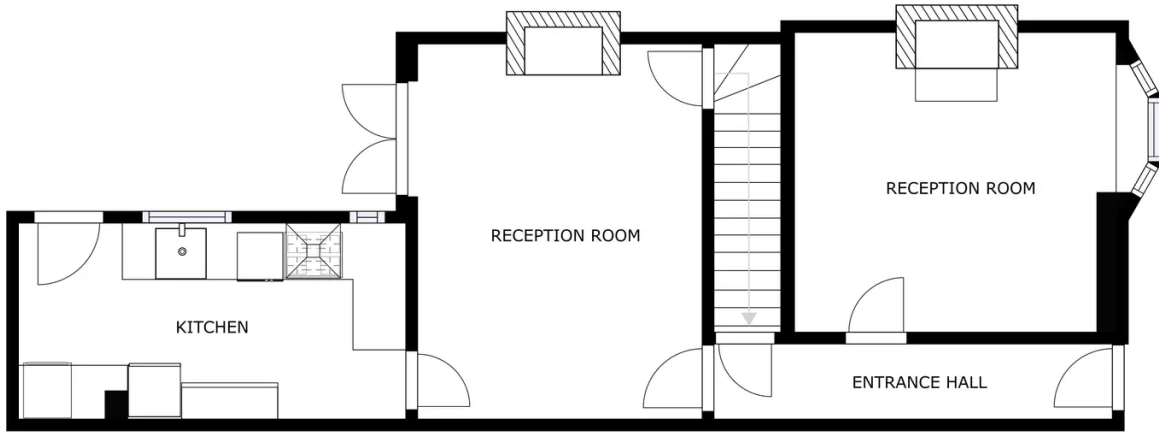
With a double-glazed window to the side elevation, bath with shower over, WC, wash hand basin, partly tiled walls, wood effect flooring and a heated chrome towel rail.

Front Garden

With a front forecourt style garden with a paved pathway to the front door and a gravelled area with shrubs.

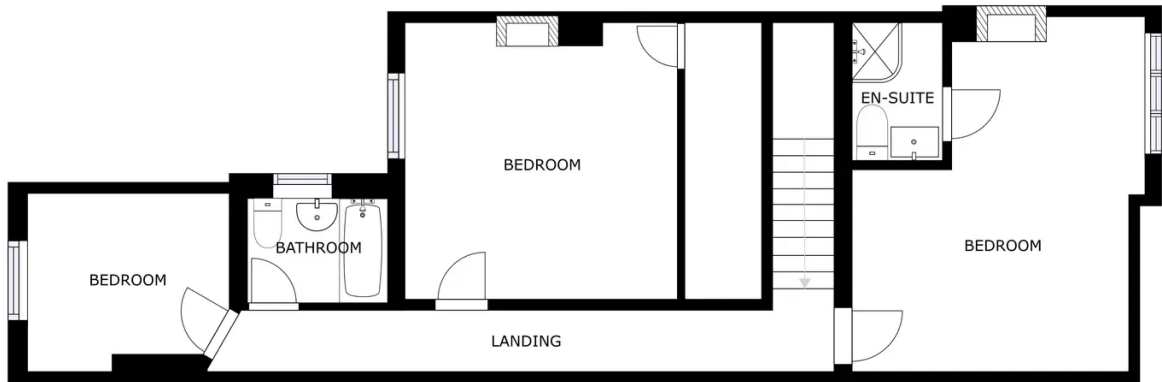
Rear Garden

With a paved area to the side with steps leading to a circular patterned block paved seating area, raised flower bed, walled and fenced perimeter, outside tap, gated side access and brick built store.



GROUND FLOOR

GROSS INTERNAL AREA
 GROUND FLOOR: 60.67 m², SECOND FLOOR: 66.12 m²
 TOTAL: 126.79 m²
 SIZES AND DIMENSIONS ARE APPROXIMATE, ACTUAL MAY VARY.



SECOND FLOOR

GROSS INTERNAL AREA
 GROUND FLOOR: 60.67 m², SECOND FLOOR: 66.12 m²
 TOTAL: 126.79 m²
 SIZES AND DIMENSIONS ARE APPROXIMATE, ACTUAL MAY VARY.



We'll keep you moving...



We must inform all prospective purchasers that the measurements are taken by an electronic take and are provided as a guide only and they should not be used as accurate measurements. We have not tested any mains services, gas or electric appliances, or fixtures and fittings mentioned in these details, therefore, prospective purchasers should satisfy themselves before committing to purchase. Intending purchasers must satisfy themselves by inspection or otherwise to the correctness of the statements contained in these particulars. Knightsbridge Estate Agents (nor any person in their employment) has any authority to make any representation or warranty in relation to the property. The floor plans are not to scale, and are intended for use as a guide to the layout of the property only. They should not be used for any other purpose. We are required by law to conduct anti-money laundering checks on all those selling or buying a property. Whilst we retain responsibility for ensuring checks and any ongoing monitoring are carried out correctly, the initial checks are carried out on our behalf by Lifetime Legal who will contact you once you have agreed to instruct us in your sale or had an offer accepted on a property you wish to buy. The cost of these checks is £60 (incl. VAT), which covers the cost of obtaining relevant data and any manual checks and monitoring which might be required. This fee will need to be paid by you in advance of us publishing your property (in the case of a vendor) or issuing a memorandum of sale (in the case of a buyer), directly to Lifetime Legal, and is non-refundable. We will receive some of the fee taken by Lifetime Legal to compensate for its role in the provision of these checks.