

Myrtle Road, Highfields

Offers Over £340,000

A charming period bay fronted FIVE BEDROOM home with accommodation spread over THREE FLOORS retaining many ORIGINAL FEATURES to include three reception rooms.





Entrance Hall

Via a leaded stain glazed hardwood front door, with tiled floor, ceiling coving, door leading to cellar, stairs to first floor, radiator.

Reception Room One

15' 0" x 14' 0" (4.57m x 4.27m)

Measurement into bay window. With bay window to the front elevation, Victorian decorated ceiling mural, chimney breast with fireplace, marble surround and hearth, ceiling coving, built-in cupboard with fold away bed, radiator.

Reception Room Two

13' 0" x 12' 5" (3.96m x 3.78m)

With French doors to the rear elevation, chimney breast with open fire, marble surround and hearth, ceiling coving, picture rail, TV point, radiator.

Reception Room Three/Dining Room

12' 5" x 11' 8" (3.78m x 3.56m)

With sash window to the side elevation, ceramic tiled floor, radiator, door leading to:

Fitted Kitchen

12' 0" x 8' 10" (3.66m x 2.69m)

With sash window to the side elevation, window to the rear elevation, ceramic tiled floor, a range of wall and base units with Corian work surfaces over, sink and drainer, inset gas hob and double oven, extractor hood, plumbing for washing machine, plumbing for dishwasher, space for tumble dryer, door leading to:



Conservatory

12' 0" x 8' 10" (3.66m x 2.69m)

Glazed conservatory with double French doors to the side elevation, brick floor, power points.

Ground Floor WC

With window to the side elevation, low-level WC, wash hand basin,

Cellar

First Floor Landing

With access to the following rooms:

Bedroom One

18' 8" x 13' 0" (5.69m x 3.96m)

With sash windows to the front elevation, chimney breast with marble surround and hearth, ceiling coving, built-in cupboard, polished wooden floor, TV point, radiator.

Bedroom Two

15' 1" x 11' 8" (4.60m x 3.56m)

With sash window to the rear elevation, ceiling coving, built-in cupboard, radiator.

Bedroom Three

11' 10" x 10' 0" (3.61m x 3.05m)

With bay window to the rear elevation, built-in cupboards, ceiling coving, radiator.









Bathroom

9' 4" x 8' 5" (2.84m x 2.57m)

With window to the side elevation, freestanding ball and claw bath, separate shower cubicle, built-in airing cupboard, wall cladding, wash hand basin, ceiling coving, loft access.

Separate WC

With window to the side elevation, pull chain WC, wash hand basin, part tiled walls, radiator.

Bedroom Four

16' 6" x 13' 0" (5.03m x 3.96m)

With sash windows to the front elevation, built-in wardrobe and overhead storage, additional storage, fireplace and surround with hearth, radiator.

Bedroom Five

13' 0" x 11' 8" (3.96m x 3.56m)

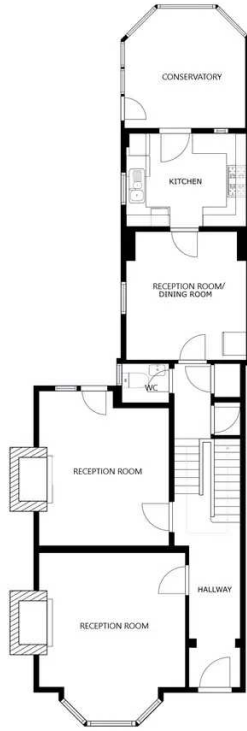
With window to the rear elevation, built-in wardrobe, wooden floor, radiator.

Front Garden

Forecourt frontage.

Rear Garden

A mature and established rear patio garden with flowerbeds and shrubs.



FLOOR 1

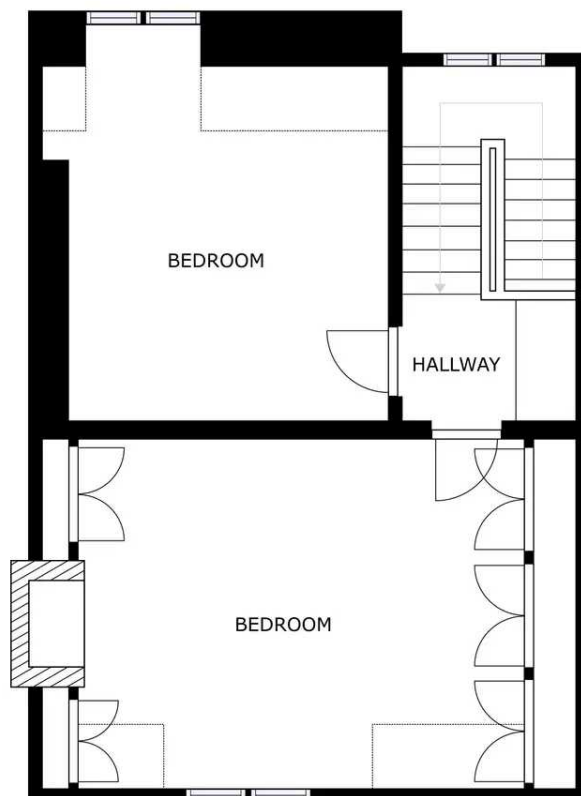
SIZES AND DIMENSIONS ARE APPROXIMATE, ACTUAL MAY VARY.



FLOOR 2

SIZES AND DIMENSIONS ARE APPROXIMATE, ACTUAL MAY VARY.





FLOOR 2

SIZES AND DIMENSIONS ARE APPROXIMATE, ACTUAL MAY VARY



The property is well located for everyday amenities and services including renowned local public and private schooling together with nursery day-care, Leicester City Centre and the University of Leicester, Leicester Royal Infirmary and Leicester General hospital, and is within minutes' walk of Victoria Park, Leicester City Centre and Queens Road shopping parade with its specialist shops, bars, boutiques and restaurants. London Road train station is also close by with links to Birmingham and London St Pancras.

Council Tax band: C

Tenure: Freehold

EPC Energy Efficiency Rating: C

We'll keep you moving...



We must inform all prospective purchasers that the measurements are taken by an electronic take and are provided as a guide only and they should not be used as accurate measurements. We have not tested any mains services, gas or electric appliances, or fixtures and fittings mentioned in these details, therefore, prospective purchasers should satisfy themselves before committing to purchase. Intending purchasers must satisfy themselves by inspection or otherwise to the correctness of the statements contained in these particulars. Knightsbridge Estate Agents (nor any person in their employment) has any authority to make any representation or warranty in relation to the property. The floor plans are not to scale, and are intended for use as a guide to the layout of the property only. They should not be used for any other purpose. We are required by law to conduct anti-money laundering checks on all those selling or buying a property. Whilst we retain responsibility for ensuring checks and any ongoing monitoring are carried out correctly, the initial checks are carried out on our behalf by Lifetime Legal who will contact you once you have agreed to instruct us in your sale or had an offer accepted on a property you wish to buy. The cost of these checks is £60 (incl. VAT), which covers the cost of obtaining relevant data and any manual checks and monitoring which might be required. This fee will need to be paid by you in advance of us publishing your property (in the case of a vendor) or issuing a memorandum of sale (in the case of a buyer), directly to Lifetime Legal, and is non-refundable. We will receive some of the fee taken by Lifetime Legal to compensate for its role in the provision of these checks.