



Carisbrooke Road, Knighton

In Excess of £120,000

A purpose built FIRST FLOOR APARTMENT situated within well maintained communal grounds enjoying accommodation including a fitted kitchen with INTEGRATED APPLIANCES and THREE BEDROOMS.

Council Tax band: B

Tenure: Leasehold

EPC Energy Efficiency Rating: C



0116 274 5544





Entrance Hall

With built-in storage cupboards, radiator.

Lounge

16' 2" x 15' 4" (4.93m x 4.67m)

Measurement into bay window. With bay window to the front elevation, TV point, radiator.

Fitted Kitchen

13' 10" x 7' 10" (4.22m x 2.39m)

With window to the side elevation, a range of wall and base units with work surfaces over, stainless steel sink, drainer and mixer tap, part tiled walls, inset four ring gas and double oven and extractor hood over, integrated dishwasher, plumbing for washing machine, integrated fridge, integrated freezer, radiator.



Bedroom One

12' 3" x 12' 3" (3.73m x 3.73m)

With window to the side elevation, built-in wardrobes, radiator.

Bedroom Two

11' 5" x 7' 10" (3.48m x 2.39m)

With window to the side elevation, radiator.

Bedroom Three

10' 3" x 8' 10" (3.12m x 2.69m)

With window to the front elevation, radiator.

Shower Room

6' 10" x 5' 4" (2.08m x 1.63m)

With corner shower cubicle, low-level WC, wash hand basin, part tiled walls, chrome ladder towel rail/radiator.

Communal Garden

Well maintained communal grounds with flowerbeds and shrubs.

Garage

Located in a block.

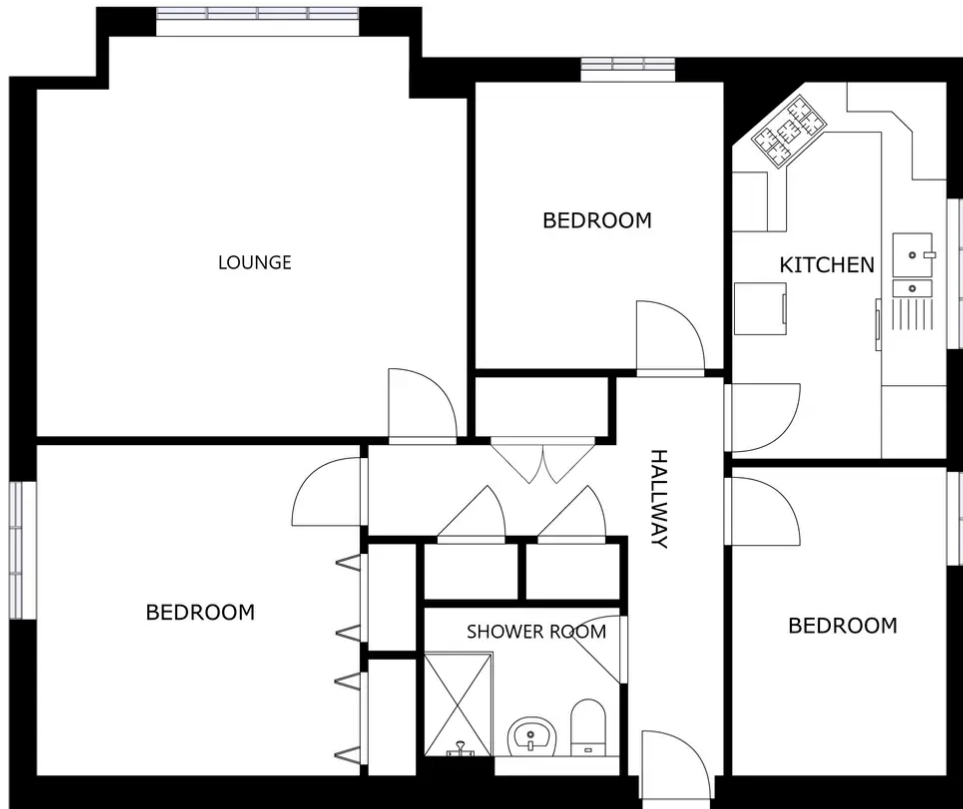
Lease Details

Current Ground Rent: Peppercorn

Current Service Charge: £1026.78 per annum

Length of Lease: 125 Year Lease From 25th March 1987

Buildings Insurance: £232.22 per annum



FLOOR 1



We'll keep you moving...



We must inform all prospective purchasers that the measurements are taken by an electronic tape and are provided as a guide only and they should not be used as accurate measurements. We have not tested any mains services, gas or electric appliances, or fixtures and fittings mentioned in these details, therefore, prospective purchasers should satisfy themselves before committing to purchase. Intending purchasers must satisfy themselves by inspection or otherwise to the correctness of the statements contained in these particulars. Knightsbridge Estate Agents & valuers (nor any person in their employment) has any authority to make any representation or warranty in relation to the property. The floor plans are not to scale, and are intended for use as a guide to the layout of the property only. They should not be used for any other purpose. Similarly, the plans are not designed to represent the actual décor found at the property in respect of flooring, wall coverings or fixtures and fittings.