



Gregory Way, Wigston

£1,600 PCM

Lose yourself in the contemporary elegance of this detached home located on a desirable estate in Wigston with a stunning open plan fitted kitchen dining room to the rear with built-in appliances and master bedroom having an EN-SUITE. Outside benefits from an ample driveway to the side with electric car charging point and a BEAUTIFUL REAR GARDEN.

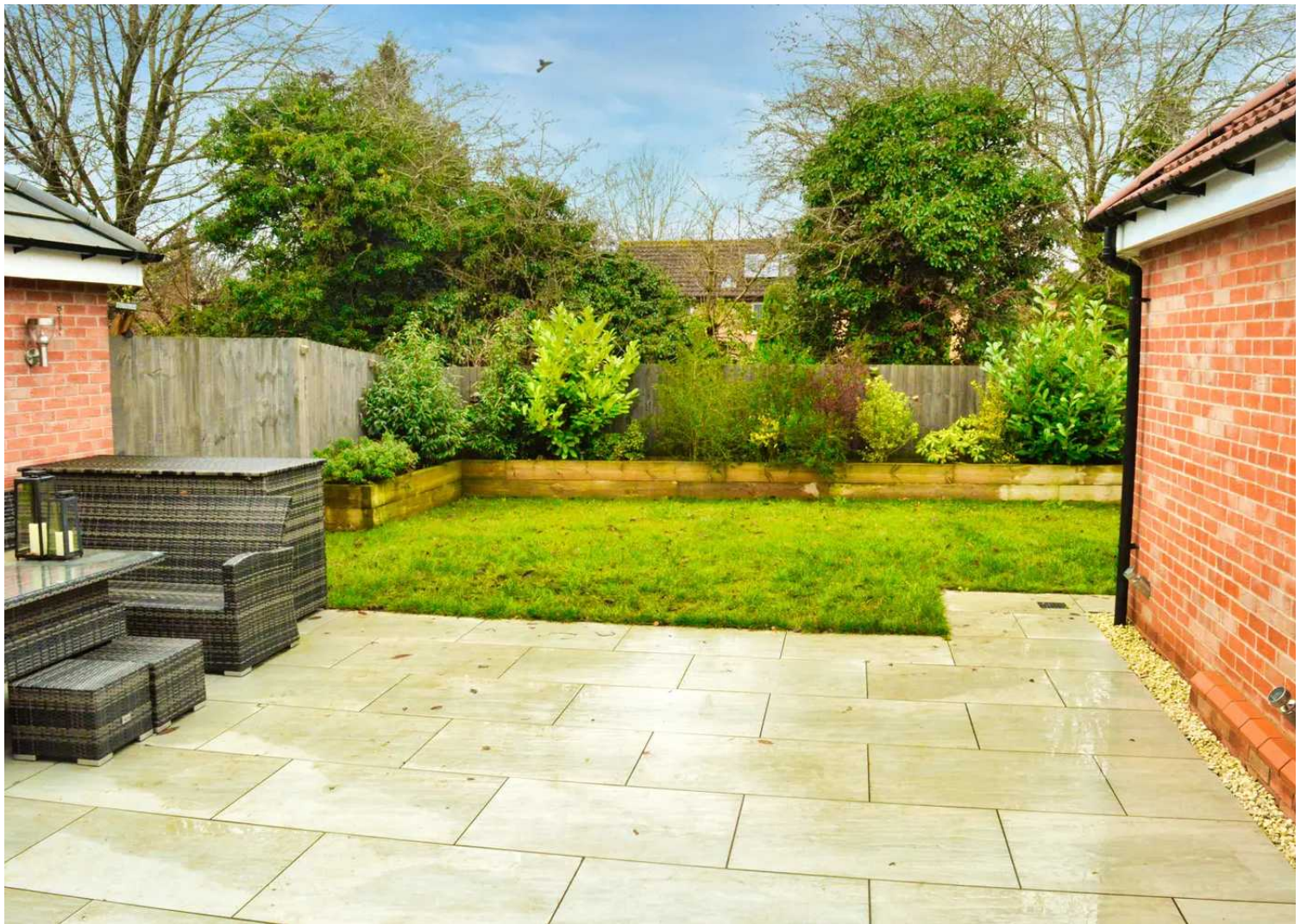


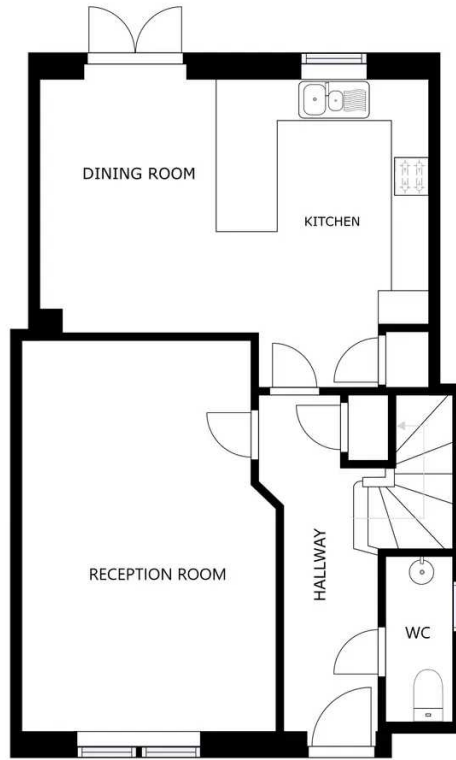






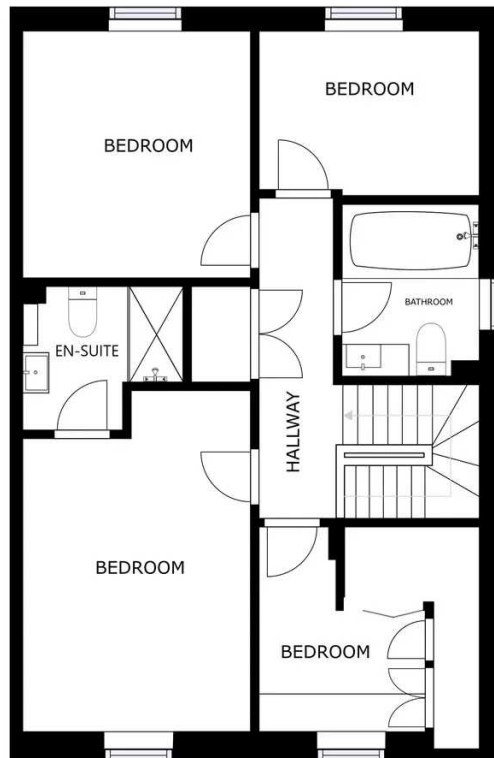






GROUND FLOOR

SIZES AND DIMENSIONS ARE APPROXIMATE, ACTUAL MAY VARY.



SECOND FLOOR

SIZES AND DIMENSIONS ARE APPROXIMATE, ACTUAL MAY VARY.





The property is perfectly situated for everyday amenities within Wigston Magna, including Sainsburys and Aldi supermarkets and popular local schooling. Regular bus routes running to and from Leicester City Centre and Knighton Park are also within reach.

Council Tax band: D

Tenure: Freehold

EPC Energy Efficiency Rating: B

We'll keep you moving...



We must inform all prospective purchasers that the measurements are taken by an electronic tape and are provided as a guide only and they should not be used as accurate measurements. We have not tested any mains services, gas or electric appliances, or fixtures and fittings mentioned in these details, therefore, prospective purchasers should satisfy themselves before committing to purchase. Intending purchasers must satisfy themselves by inspection or otherwise to the correctness of the statements contained in these particulars. Knightsbridge Estate Agents & valuers (nor any person in their employment) has any authority to make any representation or warranty in relation to the property. The floor plans are not to scale, and are intended for use as a guide to the layout of the property only. They should not be used for any other purpose. Similarly, the plans are not designed to represent the actual décor found at the property in respect of flooring, wall coverings or fixtures and fittings.