



Metropolitan Apartments, City Centre

Offers Over £125,000

A fifth floor city centre apartment with TWO BEDROOMS.

Council Tax band: C

Tenure: Leasehold

EPC Energy Efficiency Rating: D





Entrance Hall

With a cupboard and a storage heater.

Shower Room 8' 4" x 5' 6" (2.54m x 1.68m)

With WC, wash hand basins, shower unit and heated towel rail.

Bedroom One 10' 9" x 10' 2" (3.28m x 3.10m)

With two window to to the rear elevation, built-in wardrobe and a storage heater.

Bedroom Two

With a window to the side elevation and a storage heater.

Lounge Dining Kitchen

With three windows, an extractor fan, an electric hob, an oven, a dishwasher, a washing machine, a range of base units with work surfaces over, laminate flooring and a storage heater.

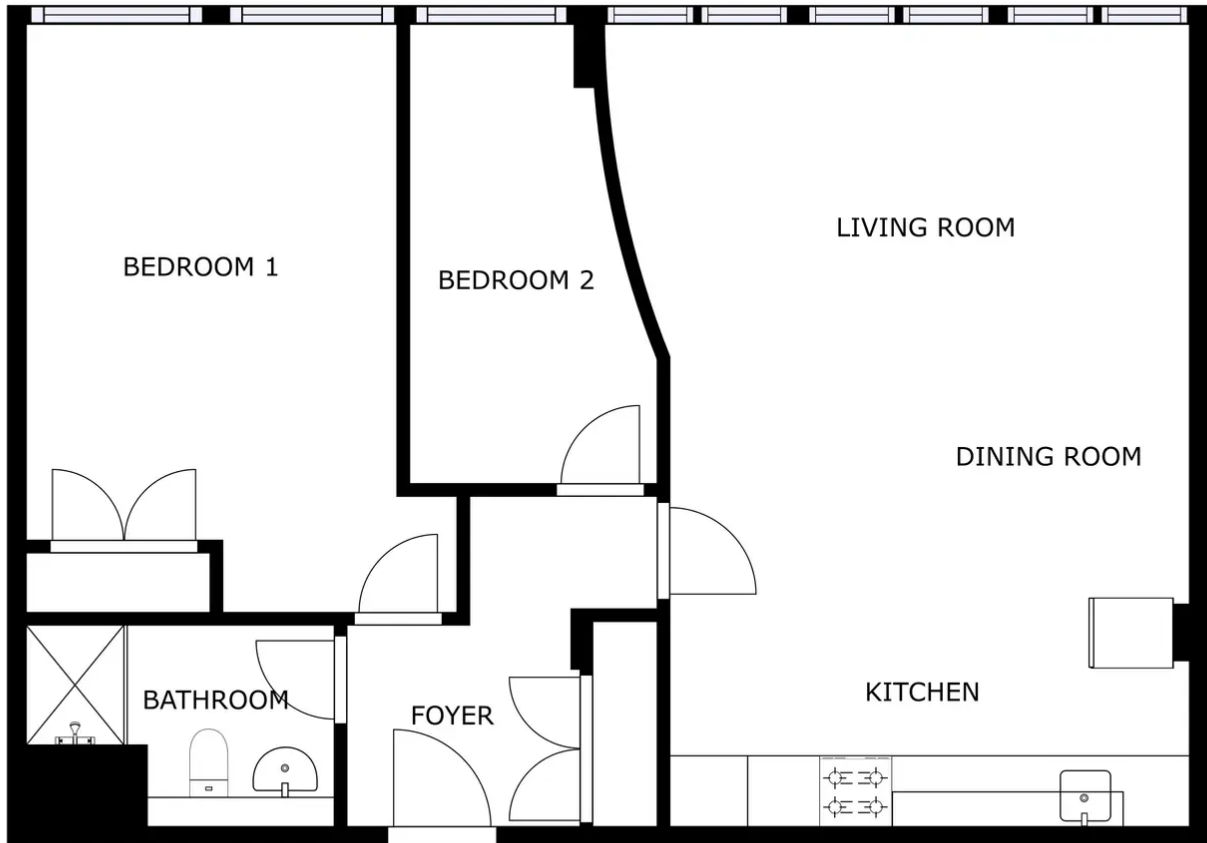


Leasehold Information

Year Remaining on the Lease - 105 Years

Ground Rent 0.00 per annum

Service Charges £2036 Per Annum



GROSS INTERNAL AREA
 GROUND FLOOR: 65.61 m²
 TOTAL: 65.61 m²

SIZES AND DIMENSIONS ARE APPROXIMATE, ACTUAL MAY VARY.

GROUND FLOOR



We'll keep you moving...



We must inform all prospective purchasers that the measurements are taken by an electronic tape and are provided as a guide only and they should not be used as accurate measurements. We have not tested any mains services, gas or electric appliances, or fixtures and fittings mentioned in these details, therefore, prospective purchasers should satisfy themselves before committing to purchase. Intending purchasers must satisfy themselves by inspection or otherwise to the correctness of the statements contained in these particulars. Knightsbridge Estate Agents & valuers (nor any person in their employment) has any authority to make any representation or warranty in relation to the property. The floor plans are not to scale, and are intended for use as a guide to the layout of the property only. They should not be used for any other purpose. Similarly, the plans are not designed to represent the actual décor found at the property in respect of flooring, wall coverings or fixtures and fittings.