



Knighton Court, Clarendon Park

Offers Over £180,000

A FOURTH FLOOR two bedroom apartment in Knighton Court with communal parking and a GARAGE.
Council Tax band: B

Tenure: Leasehold

EPC Energy Efficiency Rating: D

EPC Environmental Impact Rating: E





Private Entrance Hallway

With a door to the front and a built-in cupboard.

Living Room

18' 5" x 11' 5" (5.61m x 3.48m)

With double-glazed windows to the front and side elevations, TV point and radiator.

Kitchen

8' 7" x 8' 4" (2.62m x 2.54m)

With a double-glazed window to the front elevation, a stainless steel sink and drainer unit with a range of wall and base units with work surfaces over, a four-ring electric hob, a double oven, plumbing for an appliance, space for a fridge, and space for a freezer.



Bedroom One

9' 5" x 9' 5" (2.87m x 2.87m)

(measurements are to the wardrobe) With a double-glazed window to the rear elevation, built-in wardrobes, and a radiator.

Bedroom Two

11' 5" x 10' 10" (3.48m x 3.30m)

With a double-glazed window to the rear elevation and a radiator.

Bathroom

6' 4" x 5' 5" (1.93m x 1.65m)

With a bath with shower over, shower screen, WC, wash hand basin, tiled walls and a heated chrome towel rail.

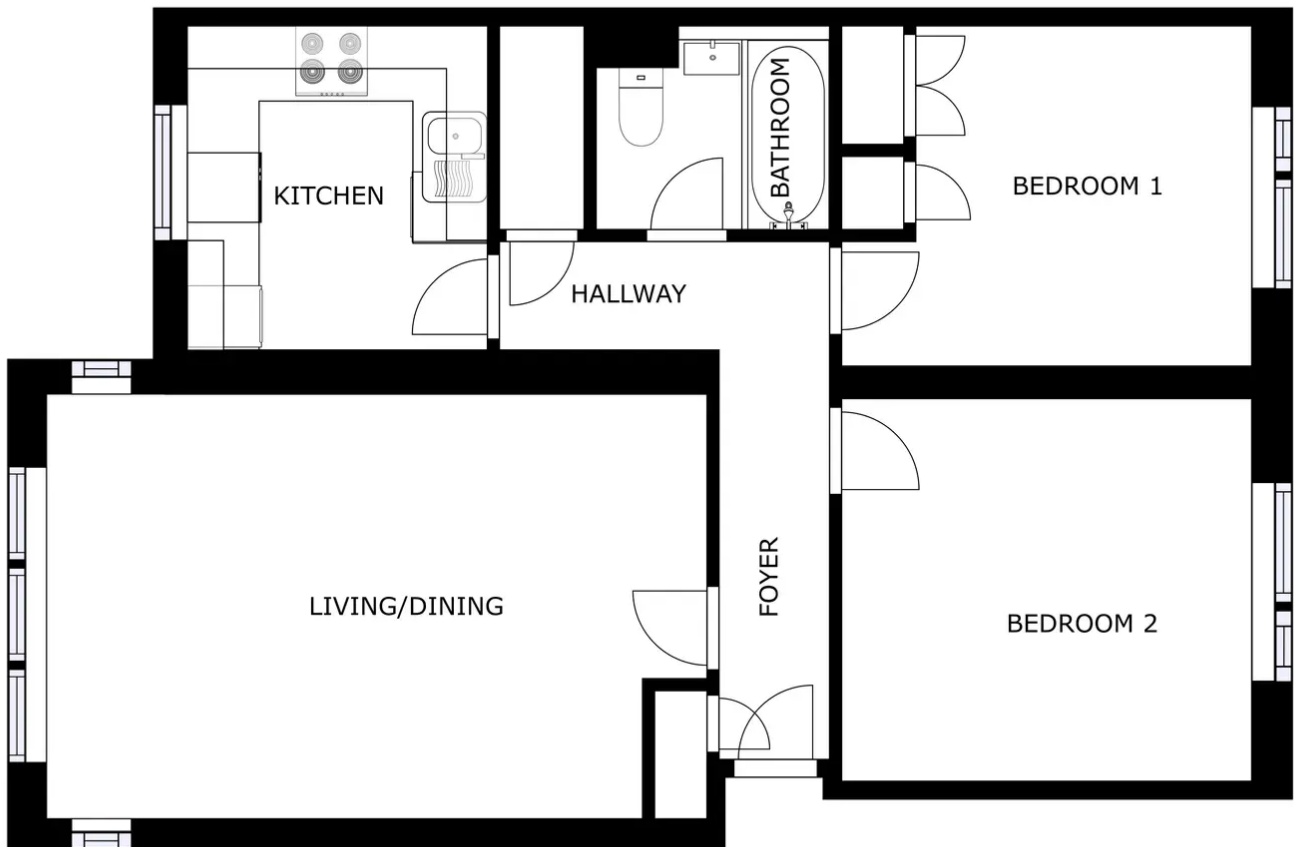
Garden

Situated in communal grounds with a lawn area, and mature plants an shrubs.

Lease Information:

Lease length - expiry 31.07.3001

Service Charges - £2,400 PA



GROSS INTERNAL AREA
FLOOR 1: 750 sq ft
TOTAL: 750 sq ft
SIZES AND DIMENSIONS ARE APPROXIMATE, ACTUAL MAY VARY



We'll keep you moving...



We must inform all prospective purchasers that the measurements are taken by an electronic tape and are provided as a guide only and they should not be used as accurate measurements. We have not tested any mains services, gas or electric appliances, or fixtures and fittings mentioned in these details, therefore, prospective purchasers should satisfy themselves before committing to purchase. Intending purchasers must satisfy themselves by inspection or otherwise to the correctness of the statements contained in these particulars. Knightsbridge Estate Agents & valuers (nor any person in their employment) has any authority to make any representation or warranty in relation to the property. The floor plans are not to scale, and are intended for use as a guide to the layout of the property only. They should not be used for any other purpose. Similarly, the plans are not designed to represent the actual décor found at the property in respect of flooring, wall coverings or fixtures and fittings.