



Stoneygate Court, Stoneygate

£240,000

THREE BEDROOM first-floor flat in STONEYGATE COURT and includes communal parking, GARAGE & beautifully maintained gardens.

Council Tax band: C

Tenure: Leasehold

EPC Energy Efficiency Rating: D



[KNIGHTSBRIDGE-ESTATES.CO.UK](https://www.knightsbridge-estates.co.uk)



SCAN ME!
TO BOOK A VIEWING



Communal Entrance

With lift and stairs to the first floor.

Private Entrance Hall

With wood effect flooring and storage cupboards.

Sitting Room 18' 0" x 11' 3" (5.49m x 3.43m)

With two windows to the front elevation and a radiator.

Dining Room 13' 6" x 9' 5" (4.11m x 2.87m)

With a window to the front elevation and a radiator.

Kitchen 12' 10" x 10' 10" (3.91m x 3.30m)

With a window to the side elevation, sink and drainer unit with a range of wall and base units with work surface over, oven, microwave, five ring gas hob, stainless steel chimney hood, dishwasher, washing machine, larder unit and tiled flooring.



Bedroom One

15' 9" x 10' 9" (4.80m x 3.28m)

With windows to the rear and side elevations and a radiator.

Bedroom Two

11' 1" x 10' 0" (3.38m x 3.05m)

With a window to the rear elevation and a radiator.

Bedroom Three

13' 3" x 9' 4" (4.04m x 2.84m)

With a window to the rear elevation and a radiator.

Shower Room

8' 0" x 5' 6" (2.44m x 1.68m)

With a window to the rear elevation, tiled shower cubicle, wash hand basin, WC, tiled flooring and a heated towel rail.

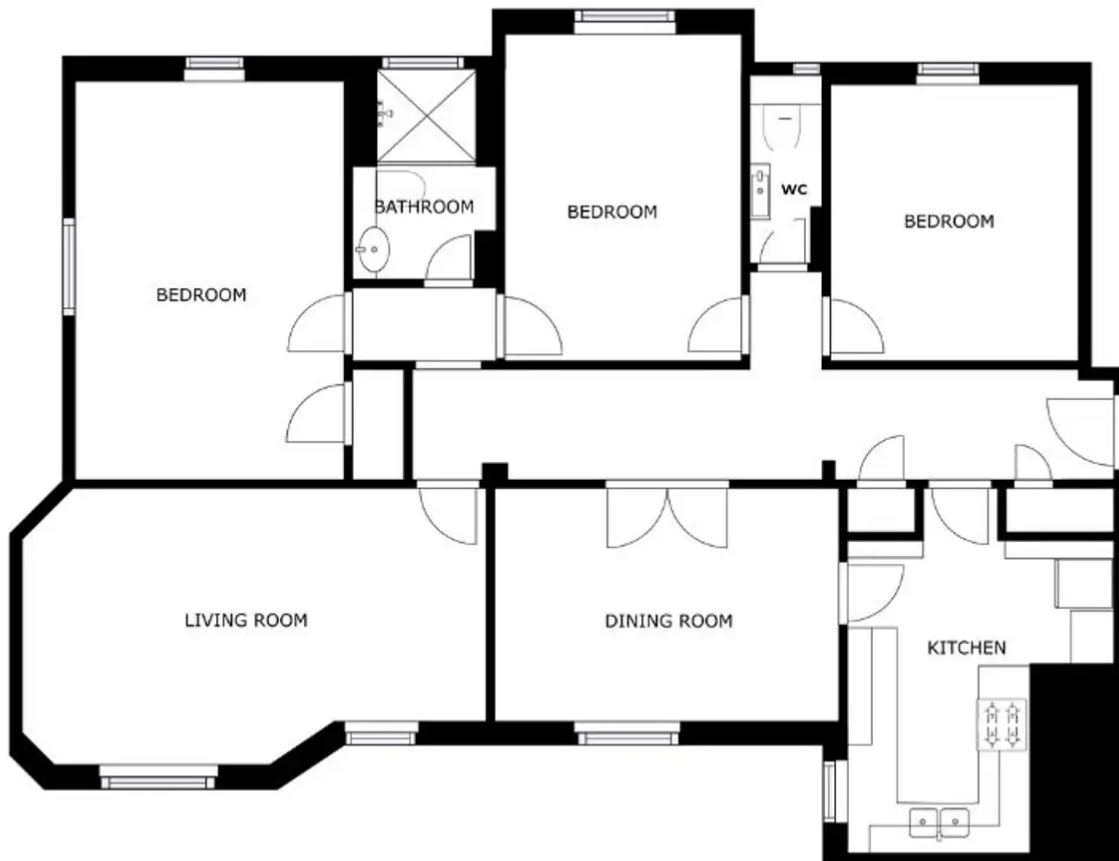
Separate WC

7' 1" x 2' 10" (2.16m x 0.86m)

With a window to the rear elevation, WC, wash hand basin, and tiled flooring.

Communal Garden

Beautifully maintained communal gardens.



GROSS INTERNAL AREA
GROUND FLOOR: 108.38 m²
TOTAL: 108.38 m²
SIZES AND DIMENSIONS ARE APPROXIMATE, ACTUAL MAY VARY.



We'll keep you moving...



We must inform all prospective purchasers that the measurements are taken by an electronic tape and are provided as a guide only and they should not be used as accurate measurements. We have not tested any mains services, gas or electric appliances, or fixtures and fittings mentioned in these details, therefore, prospective purchasers should satisfy themselves before committing to purchase. Intending purchasers must satisfy themselves by inspection or otherwise to the correctness of the statements contained in these particulars. Knightsbridge Estate Agents & valuers (nor any person in their employment) has any authority to make any representation or warranty in relation to the property. The floor plans are not to scale, and are intended for use as a guide to the layout of the property only. They should not be used for any other purpose. Similarly, the plans are not designed to represent the actual décor found at the property in respect of flooring, wall coverings or fixtures and fittings.