



Clarendon Park Road, Clarendon Park, Leicester, LE2 3AG

£240,000

An ATTRACTIVE bay fronted mid terrace home available with NO UPWARD CHAIN providing WELL PROPORTIONED accommodation and SCOPE FOR EXTENSION or loft conversion.

Council Tax band: B

Tenure: Freehold

Energy Rating: E



KNIGHTSBRIDGE-ESTATES.CO.UK



SCAN ME!
TO BOOK A VIEWING



Reception Room One

13' 7" x 10' 10" (4.14m x 3.30m)

Measurement into bay window. With double glazed bay window to the front elevation, meter cupboard, fireplace, radiator.

Reception Room Two

12' 0" x 11' 0" (3.66m x 3.35m)

With double glazed window to the rear elevation, under stairs storage cupboard, stairs to first floor, laminate floor, radiator.

Kitchen

12' 6" x 6' 5" (3.81m x 1.96m)

With double glazed window and door to the side elevation, stainless steel sink and drainer unit with a range of wall and base units with work surfaces over, built-in oven and gas hob with chimney hood over, plumbing for washing machine, cupboard housing boiler, tiled floor.



First Floor Landing

With loft access.

Bedroom One

12' 4" x 11' 9" (3.76m x 3.58m)

With double glazed window to the front elevation, radiator.

Bedroom Two

12' 1" x 9' 5" (3.68m x 2.87m)

With double glazed window to the rear elevation, built-in cupboard, radiator.

Bathroom

12' 6" x 6' 7" (3.81m x 2.01m)

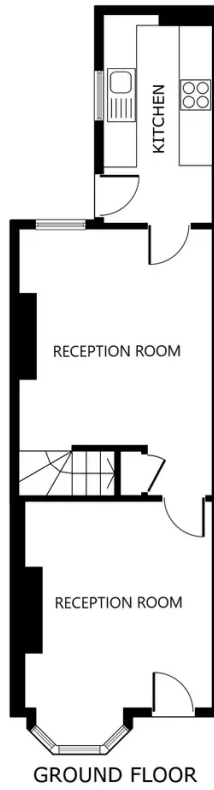
With double glazed window to the rear elevation, bath with mixer tap shower attachment, pedestal wash hand basin, low-level WC, part tiled walls, vinyl floor, radiator.

Front Garden

Front forecourt.

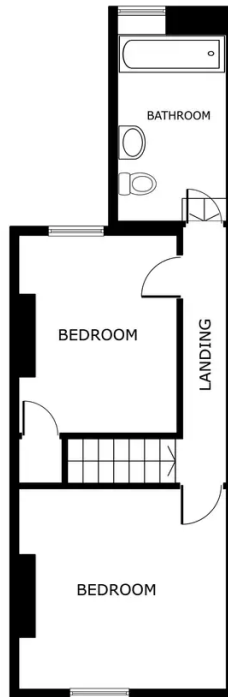
Rear Garden

A generous sized southerly facing rear garden with paved patio seating area, lawn, walled perimeter, outside store, gate to side access.



GROUND FLOOR

SIZES AND DIMENSIONS ARE APPROXIMATE, ACTUAL MAY VARY.



FLOOR 1

SIZES AND DIMENSIONS ARE APPROXIMATE, ACTUAL MAY VARY.



The floor plans are not to scale, and are intended for use as a guide to the layout of the property only. They should not be used for any other purpose. Similarly, the plans are not designed to represent the actual décor found at the property in respect of flooring, wall coverings or fixtures and fittings.

We'll keep you moving...

