



**Keith
Ashton**

Ongar Road, Kelvedon Hatch
Brentwood



APARTMENT 2 DOMOS PLACE ONGAR ROAD

Kelvedon Hatch Brentwood, CM15 0FJ

Offers In Excess Of £415,000

Benefitting from allocated parking spaces and the use of communal gardens to the rear, we are delighted to bring to market this beautifully maintained two, double-bedroom, ground floor apartment located in the semi-rural village of Kelvedon Hatch within walking distance of local amenities, including bus routes into Brentwood, Shenfield and Ongar Town centres. Constructed in 2020 and being just one of six luxury apartments, 'apartment 2' benefits from remaining NHBC building warranty, plus a long lease with 120 years remaining. The main living space is a large kitchen/family room of some 32' in length which features a 'Juliette' balcony to the front elevation, whilst to the master bedroom there is access to a fully tiled ensuite shower room, in addition to a main family bathroom off the hallway.

- TWO DOUBLE BEDROOMS
- REMAINING NHBC BUILDING WARRANTY
- GERMAN ENGINEERED 'NOLTE KUCHEN' KITCHEN
- FULLY TILED BATHROOM
- EN-SUITE TO MASTER BEDROOM
- ALLOCATED PARKING SPACES
- OPEN PLAN KITCHEN / FAMILY ROOM
- LANDSCAPED COMMUNAL REAR GARDENS

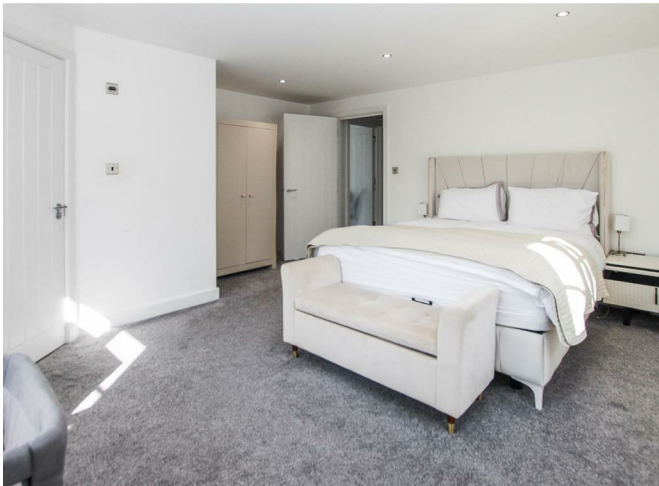


Description

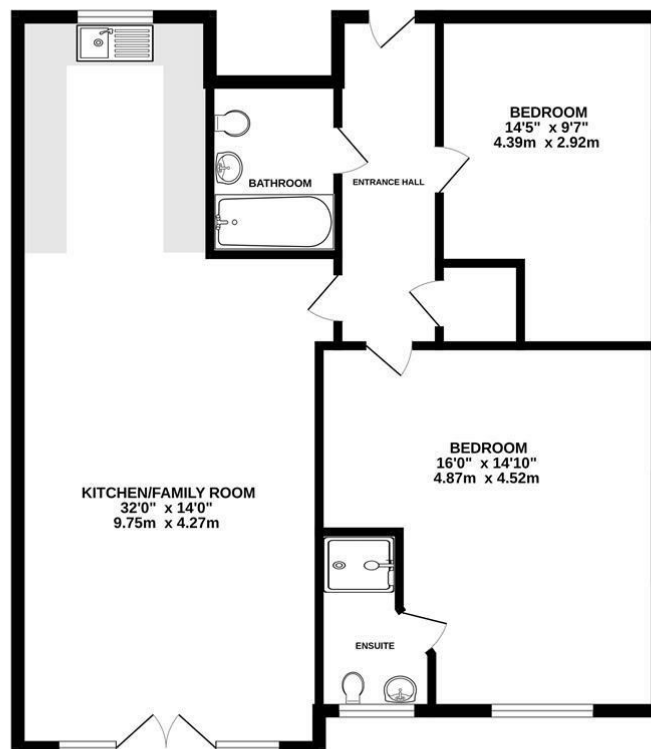
Entering the communal entrance via a secure video entry system you have access to your own front door which leads into a spacious hallway with doors to all rooms and a useful built-in storage cupboard. Off the hallway there is a fully tiled bathroom which includes a panelled bath with rainfall shower over, along with a w.c. and wash hand basin set into a modern unit. As previously mentioned, the main living space is a lovely bright kitchen / family room, which measures 32' x 14' max, there is a window to the rear overlooking the garden and a lovely 'Juliette' balcony to the front elevation. The kitchen area has been fitted in a modern range of wall and base units and includes integrated oven, hob with extractor above and a fridge/freezer.

The property features two, double bedrooms both have ample space for free standing or fitted bedroom furniture. The master bedroom benefits from having a fully tiled en-suite shower room, which includes a shower with overhead rainfall shower plus handheld attachment, close coupled w.c. and vanity wash hand basin.

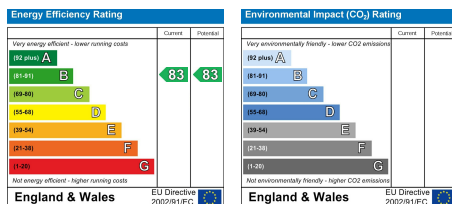
Externally, you have the use of well kept, landscaped communal gardens and secure allocated parking is provided for two vehicles.



GROUND FLOOR
857 sq.ft. (79.6 sq.m.) approx.



TOTAL FLOOR AREA : 857 sq.ft. (79.6 sq.m.) approx.
Measurements are approximate. Not to scale. Illustrative purposes only.
Made with Metropix ©2025



SERVICES:

Local Authority: Brentwood
Council tax band: D
Post code: CM15 0FJ

VIEWING:

Strictly by prior arrangement with Keith Ashton Estate Agents

OPENING HOURS:

Monday to Friday: 8.45AM - 6.30PM | Saturdays: 9AM - 5.30PM | Sundays: 10AM - 2PM

MORTGAGE INFORMATION: We offer the additional facility of an in-house Independent Financial Adviser who will access all mortgage lenders with the purpose of providing you with the benefit of choice. For quotations or comparables please call 01277 375757 or visit our interactive website at www.mortgagebusiness.net



We the Agent have not tested any apparatus, fittings or services for this property. The plot size is intended merely as a guide and has not been officially measured or verified by the Agent. Photographs are for illustration only and may depict items which are not for sale or included in the sale of the property. As part of the service we offer we may recommend ancillary services to you which we believe may help you with your property transaction. We wish to make you aware, that should you decide to use these services we will receive a referral fee. For full and detailed information please visit 'terms and conditions' on our website www.keithashton.co.uk

Brentwood
Tel. 01277 260858

Village Office
Tel. 01277 375757

Lettings Office
Tel. 01277 202200

Explore more @ www.keithashton.co.uk

