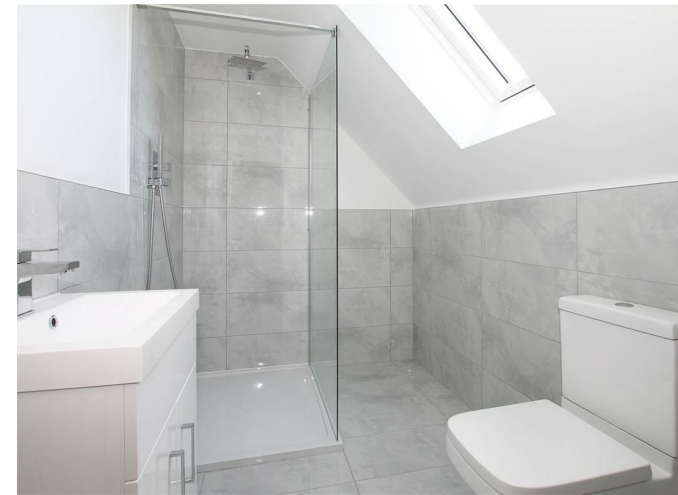




Keith
Ashton

Ongar Road, Kelvedon Hatch
Brentwood



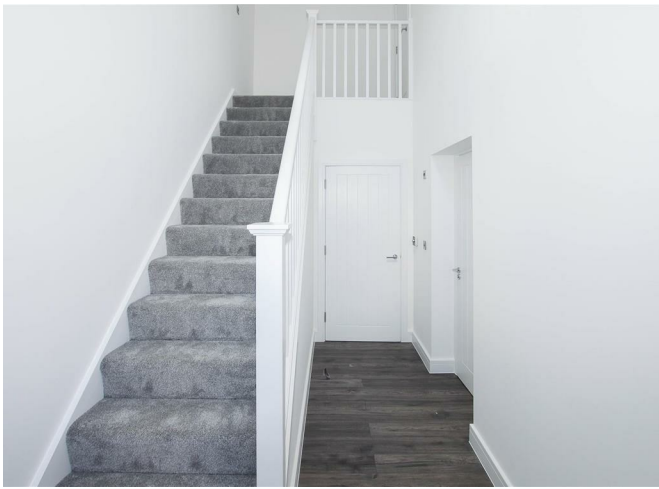
5 DOMOS PLACE ONGAR ROAD

Kelvedon Hatch Brentwood, CM15 0FJ

Guide Price £500,000

'Domos Place' is situated in the semi-rural village of Kelvedon Hatch where residents can enjoy the surrounding countryside and a taste of the village lifestyle, and yet still have the convenience of bus routes into Brentwood Town centre with it's vibrant high street, along with being just a short drive of around 5 miles to Brentwood and Shenfield Mainline Train Stations, for commuters looking to travel into London.

- TWO BEDROOMS
- TWO BATHROOM
- LUXURY DUPLEX APARTMENT
- HIGH SPEC. THROUGHOUT
- JULIET BALCONY
- COMMUNAL GARDENS
- TWO CARPORT PARKING SPACES
- 1030 SQ.FT



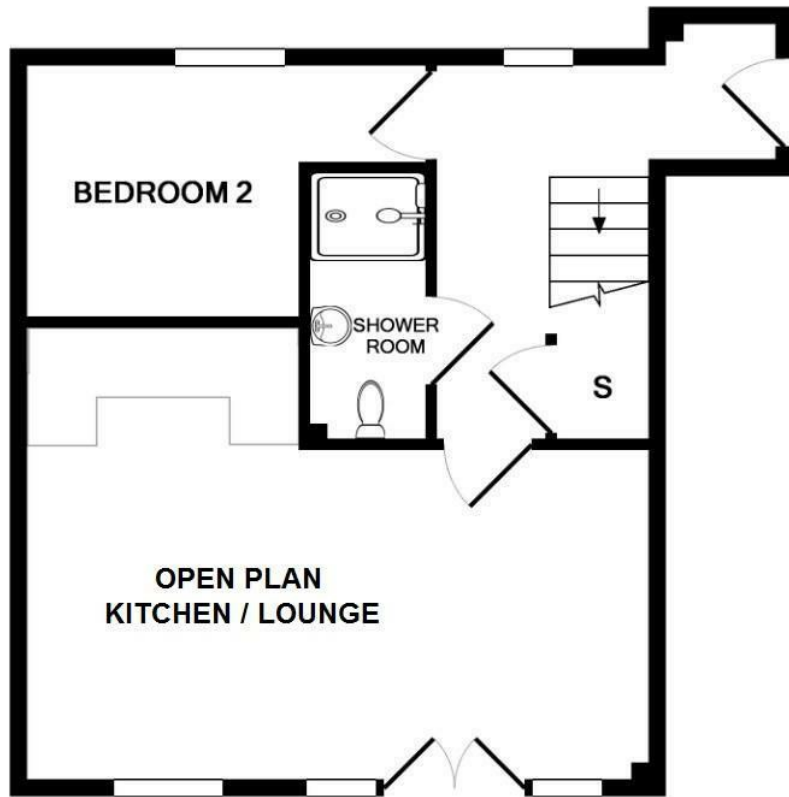
Description

Located on the first and second floors, this duplex apartment features a spacious open-plan kitchen/diner that includes integrated appliances and a Juliet balcony. Also to this floor you will find a double bedroom and shower room wc. Stairs lead up from the hallway to a spacious landing that leads to the impressive master bedroom and en-suite shower room.

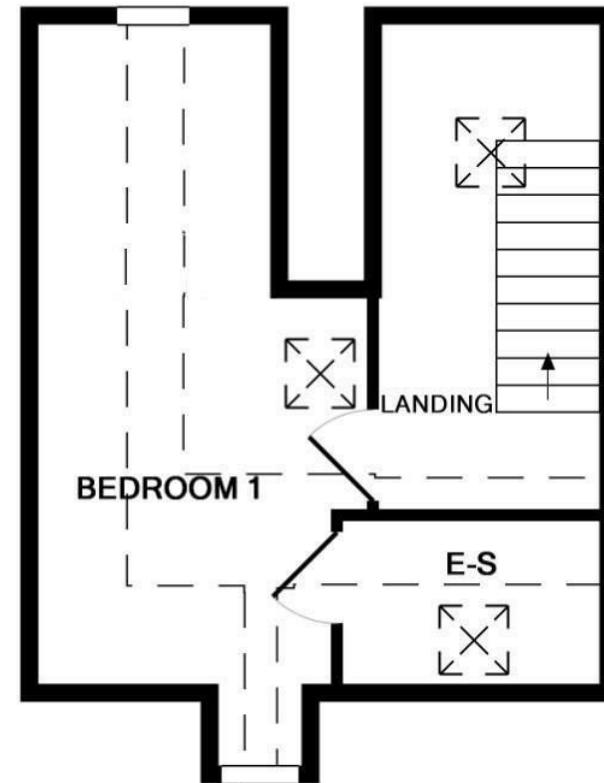
The apartment is fitted to a high specification throughout, including a kitchen with integrated appliances and fully tiled bathrooms, and has access to a landscaped communal garden to the rear. There is also two allocated parking spaces available.

Further benefits include access to a landscaped communal garden to the rear, two off-street parking spaces and due to the property being constructed in 2020, it comes with approximately six years remaining on the NHBC warranty.

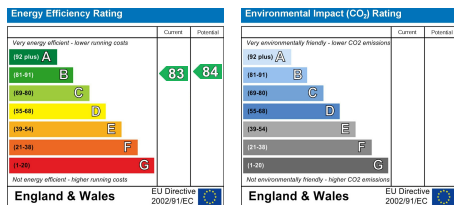




1ST FLOOR



2ND FLOOR



SERVICES:

Local Authority: Brentwood
 Council tax band: E
 Post code: CM15 0FJ

VIEWING:

Strictly by prior arrangement with Keith Ashton Estate Agents

OPENING HOURS:

Monday to Friday: 8.45AM - 6.30PM | Saturdays: 9AM - 5.30PM | Sundays: 10AM - 2PM

MORTGAGE INFORMATION:

We offer the additional facility of an in-house Independent Financial Adviser who will access all mortgage lenders with the purpose of providing you with the benefit of choice. For quotations or comparables please call 01277 375757 or visit our interactive website at www.mortgagebusiness.net



We the Agent have not tested any apparatus, fittings or services for this property. The plot size is intended merely as a guide and has not been officially measured or verified by the Agent. Photographs are for illustration only and may depict items which are not for sale or included in the sale of the property. As part of the service we offer we may recommend ancillary services to you which we believe may help you with your property transaction. We wish to make you aware, that should you decide to use these services we will receive a referral fee. For full and detailed information please visit 'terms and conditions' on our website www.keithashton.co.uk