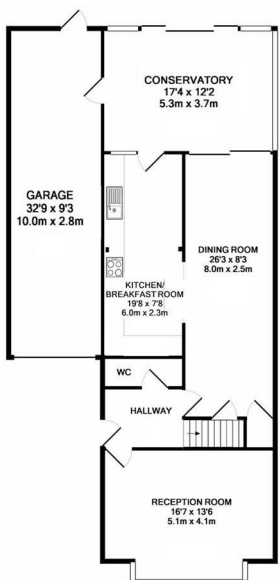




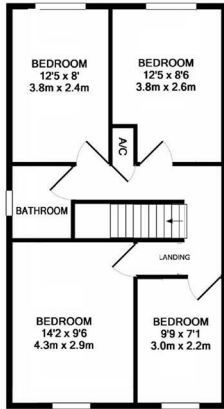
Keith  
Ashton

Glovers Field, Kelvedon Hatch  
Brentwood





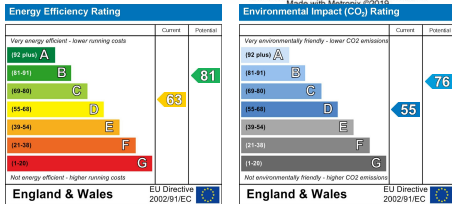
GROUND FLOOR  
APPROX. FLOOR  
AREA 1207 SQ.FT.  
(112.1 SQ.M.)



1ST FLOOR  
APPROX. FLOOR  
AREA 534 SQ.FT.  
(49.6 SQ.M.)

TOTAL APPROX. FLOOR AREA 1741 SQ.FT. (161.8 SQ.M.)

Whilst every attempt has been made to ensure the accuracy of the floor plan contained here, measurements of doors, windows, rooms and any other items are approximate and no responsibility is taken for any error, omission, or mis-statement. This plan is for illustrative purposes only and should be used as such by any prospective purchaser. The services, systems and appliances shown have not been tested and no guarantee as to their operability or efficiency can be given.



## 84 Glovers Field, Kelvedon Hatch, Brentwood, CM15 0BD

Situated in a pleasant cul-de-sac and backing onto open farmland is this four bedroom, garage linked detached house which has been extended to the rear twice giving extended dining room and kitchen accommodation, along with a conservatory which has patio doors leading to the beautifully kept 117' rear garden. On the ground floor you will also find a large lounge with a big bay window allowing for lots of natural lighting, along with a ground floor cloakroom. To the first floor all of the bedrooms have fitted wardrobes, with the rear bedrooms having lovely views over the fields beyond, and there is a family shower room which has been fitted in a matching white suite. The property is heated by warm air central heating and has UPVC double-glazed windows throughout, and there is also a well maintained garage which is 32'in length with the rear part being set up as a useful utility area. A deep block paved driveway to the front provides parking for up to four vehicles

Guide Price £600,000

### SERVICES:

Local Authority: Brentwood  
Council tax band: E  
Post code: CM15 0BD

### VIEWING:

Strictly by prior arrangement with Keith Ashton Estate Agents

### OPENING HOURS:

Monday to Friday: 8.45AM - 6.30PM | Saturdays: 9AM - 5.30PM | Sundays: 10AM - 2PM

### MORTGAGE INFORMATION:

We offer the additional facility of an in-house Independent Financial Adviser who will access all mortgage lenders with the purpose of providing you with the benefit of choice. For quotations or comparables please call 01277 375757 or visit our interactive website at [www.mortgagebusiness.net](http://www.mortgagebusiness.net)



We the Agent have not tested any apparatus, fittings or services for this property. The plot size is intended merely as a guide and has not been officially measured or verified by the Agent. Photographs are for illustration only and may depict items which are not for sale or included in the sale of the property. As part of the service we offer we may recommend ancillary services to you which we believe may help you with your property transaction. We wish to make you aware, that should you decide to use these services we will receive a referral fee. For full and detailed information please visit 'terms and conditions' on our website [www.keithashton.co.uk](http://www.keithashton.co.uk)

Brentwood  
Tel. 01277 260858

Village Office  
Tel. 01277 375757

Lettings Office  
Tel: 01277 202200

Explore more @ [www.keithashton.co.uk](http://www.keithashton.co.uk)

