



Churchills

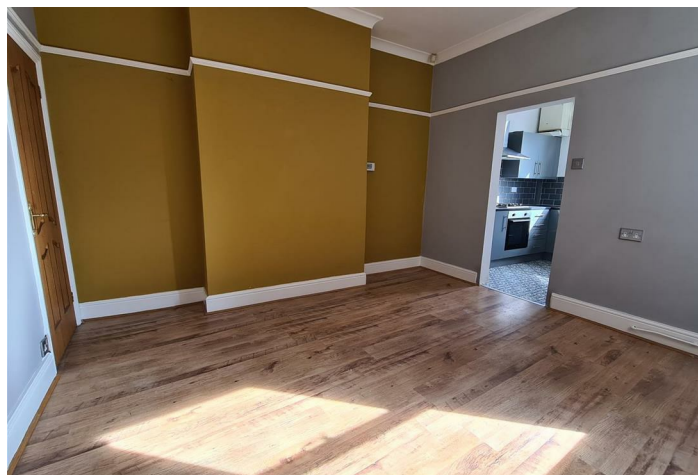


Fitzwilliam Street

Swinton, Mexborough S64 8RE

- CHARACTER PROPERTY
- TWO DOUBLE BEDROOMS
 - MODERN KITCHEN
 - DOWNSTAIRS WC
 - EPC RATING TBC
- SEMI DETACHED STONE FRONTED
 - TWO RECEPTION ROOMS
 - MODERN BATHROOM
 - ENCLOSED GARDEN

Offers In The Region Of £135,000 Freehold





Location





Local Authority Rotherham
Council Tax Band B
EPC Rating E



Churchills Sales Office

16 High Street, Mexborough, South
Yorkshire, S64 9AS

Contact

01709 582880
Info@churchillsestateagents.com
www.churchillsestateagents.com

Agents Note: Whilst every care has been taken to prepare these particulars, they are for guidance purposes only. All measurements are approximate and for general guidance purposes only and whilst every care has been taken to ensure accuracy, they should not be relied upon and potential buyers/tenants are advised to recheck the measurements.