



Bloomfield Rise,

Offers In Excess Of £400,000

**FOR SALE**

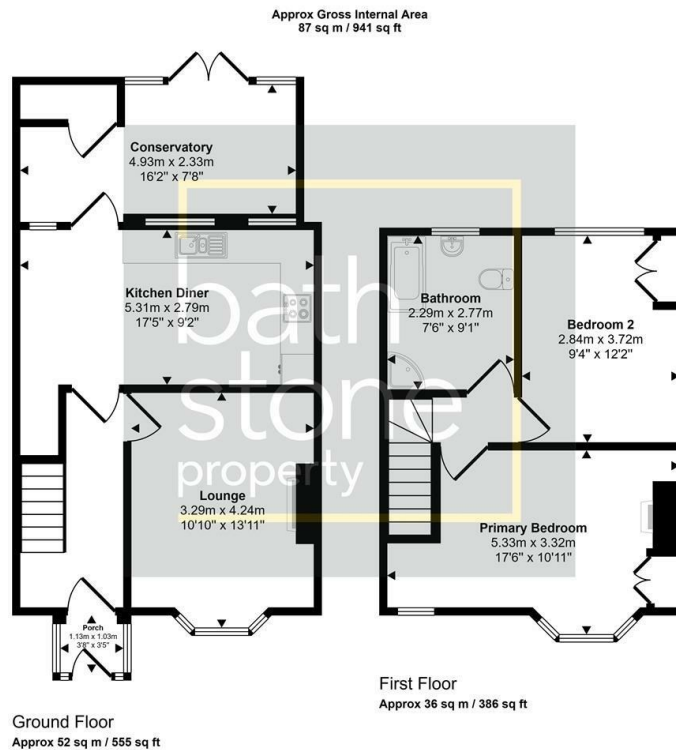




- No Chain
- Two Bedrooms
- Garage and Off Street Parking x 1
- Cul-de-Sac
- Finished to a Good Standard
- Private Garden

## THE PROPERTY

This beautifully presented 2-bed terraced home in a quiet cul-de-sac in Bloomfield Rise, includes an open-plan kitchen/diner, a garage with parking, and a high-quality finish throughout. Offered with no onward chain, this home is ready to move into.



This floorplan is only for illustrative purposes and is not to scale. Measurements of rooms, doors, windows, and any items are approximate and no responsibility is taken for any error, omission or mis-statement. Icons of items such as bathroom suites are representations only and may not look like the real items. Made with Made Snappy 360.



Energy Efficiency Rating		
	Current	Potential
Very energy efficient - lower running costs		
(92 plus) <b>A</b>		
(81-91) <b>B</b>		
(69-80) <b>C</b>		77
(55-68) <b>D</b>	66	
(39-54) <b>E</b>		
(21-38) <b>F</b>		
(1-20) <b>G</b>		
Not energy efficient - higher running costs		
England & Wales		EU Directive 2002/91/EC