



5 Greendown Place

Bath, BA2 5DD

£1,550 PCM

Nestled in the charming cul-de-sac of Greendown Place, this delightful terraced house offers a serene retreat in a popular community area of Combe Down. With its picturesque exterior, this property exudes a quaint cottage charm that is sure to appeal to those seeking a peaceful home. Available immediately. Ideal for a small family or two professional sharers.

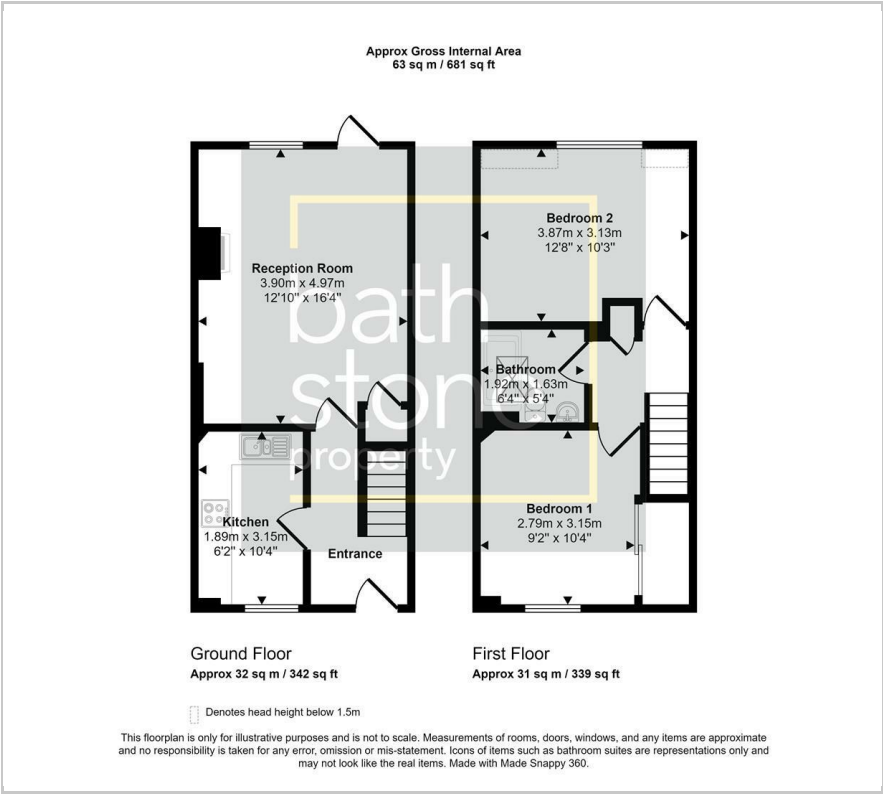
- Pretty Cottage
- Double Bedrooms
- Newly Decorated
- Enclosed Garden
- Gas Central Heating
- UPVC Windows
- Feature Fireplace

Viewing

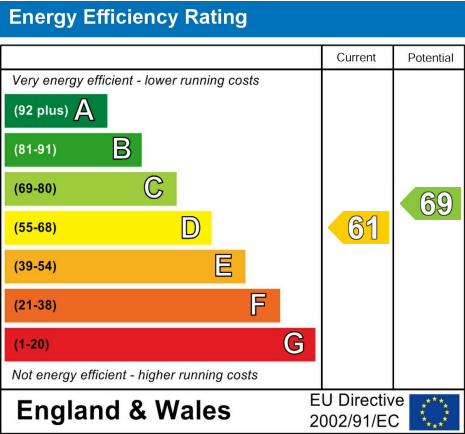
Please contact our Bath Stone Property Office on 01225422224 if you wish to arrange a viewing appointment for this property or require further information.



Floor Plan



Energy Efficiency Graph



Please give us Feedback



These particulars, whilst believed to be accurate are set out as a general outline only for guidance and do not constitute any part of an offer or contract. Intending purchasers should not rely on them as statements of representation of fact, but must satisfy themselves by inspection or otherwise as to their accuracy. No person in this firms employment has the authority to make or give any representation or warranty in respect of the property.