



Wellsway,

£2,575 Per Calendar Month

FOR SALE

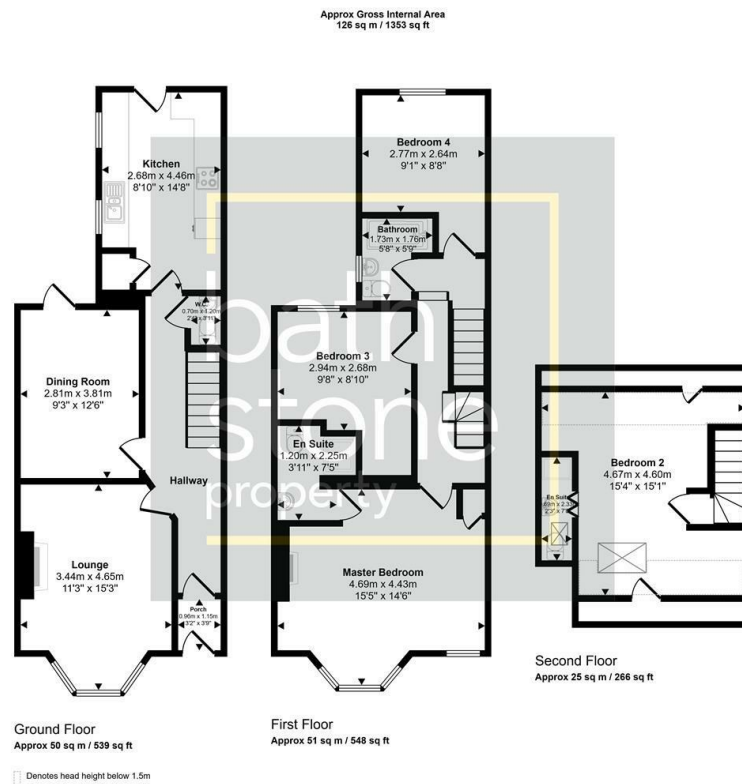


- Heart of the Community
- Four Bedrooms
- Modern Kitchen
- Spacious Accommodation
- Three Bathrooms
- Enclosed Rear Garden

THE PROPERTY

Nestled in the heart of the vibrant Bear Flat community in Bath, this charming four-bedroom house offers a perfect blend of modern living and traditional comfort. Available immediately for family, unfortunately this property does not have the correct planning permissions for sharers.

Please call 01225 422224 to arrange a viewing. Not suitable for pets.



This floorplan is only for illustrative purposes and is not to scale. Measurements of rooms, doors, windows, and any items are approximate and no responsibility is taken for any error, omission or mis-statement. Icons of items such as bathroom suites are representations only and may not look like the real items. Made with Made Snappy 360.



Energy Efficiency Rating

	Current	Potential
Very energy efficient - lower running costs		
(92 plus) A		
(81-91) B		
(69-80) C		
(55-68) D		
(39-54) E		
(21-38) F		
(1-20) G		
Not energy efficient - higher running costs		
England & Wales	EU Directive 2002/91/EC	

1 Hayes Place, Bath, BANES, BA2 4QW

Tel: 01225422224 Email: sales@bathstoneproperty.com <https://www.bathstoneproperty.com>