



Lytton Gardens,

£400,000

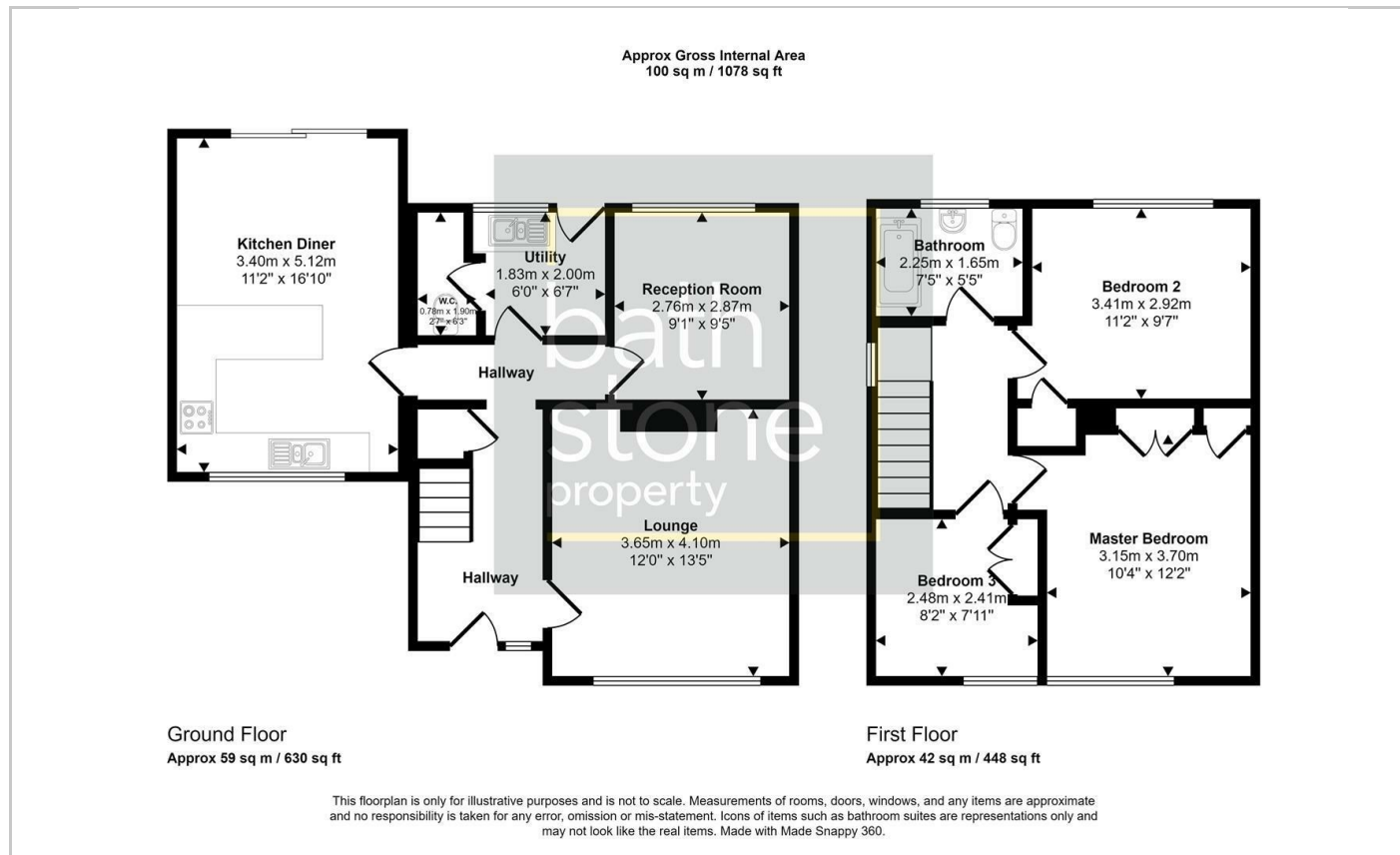
FOR SALE



- Three bedrooms
- End-Terrace
- Two Reception rooms
- Utility and WC
- Cul-De-Sac
- Driveway and Garage
- Kitchen Diner
- Garden and Views

THE PROPERTY

Lytton Gardens located in a cul-de-sac of southern part of Bath, is an end-terrace house which offers versatile living. The property briefly comprises of three bedrooms, two reception rooms, kitchen diner, utility room as well as WC, family bathroom, driveway and garage and of course, a fantastic garden to the rear with views.



Energy Efficiency Rating		
	Current	Potential
Very energy efficient - lower running costs		
(92 plus) A		87
(81-91) B		
(69-80) C	74	
(55-68) D		
(39-54) E		
(21-38) F		
(1-20) G		
Not energy efficient - higher running costs		
England & Wales		EU Directive 2002/91/EC