



Glen House The Folly

Bristol, BS31 3JW

Offers In Excess Of £700,000

Located on a private lane in a desirable part of Saltford this period property enjoys far reaching views. The accommodation briefly comprises; Hallway, WC, Open Plan Kitchen Dining and 2nd reception room, Main Sitting Room, Three/Four Bedrooms (master with en-suite) Family Bathroom. The property benefits from gas central heating, part double glazing and spaciousness. An early viewing is advisable to avoid disappointment.

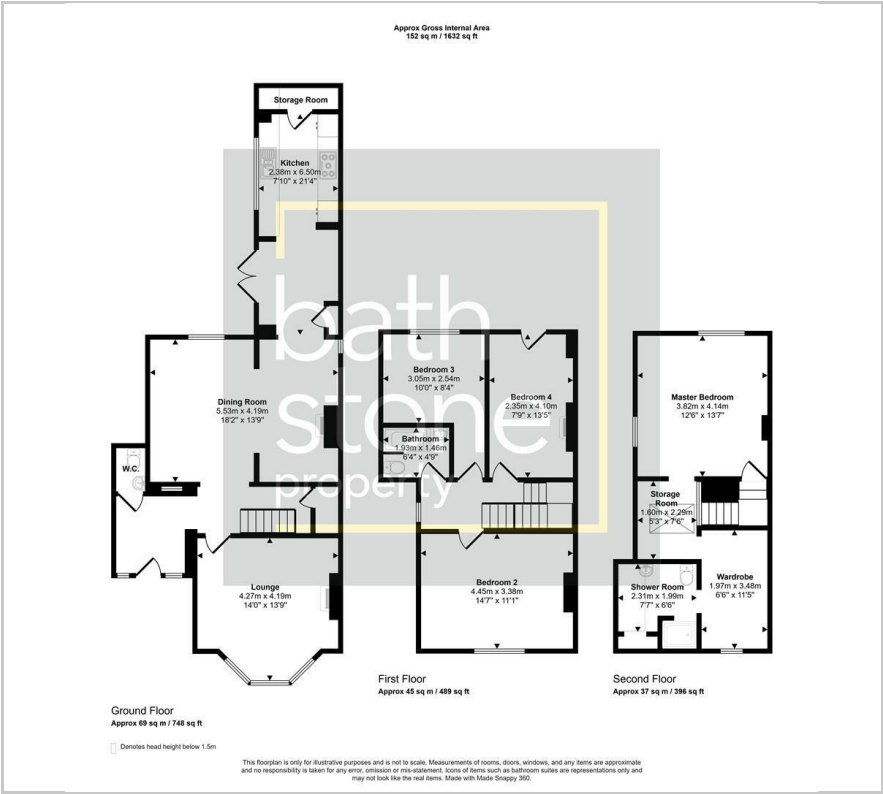
- Semi-Detached
- 3/4 Bedrooms
- Character Throughout
- Beautiful Views
- Over Three Floors
- Private Garden
- Excellent Location
- Edge of Village - Private Road
- En-suite to Master
- Double Garage

Viewing

Please contact our Bath Stone Property Office on 01225422224 if you wish to arrange a viewing appointment for this property or require further information.



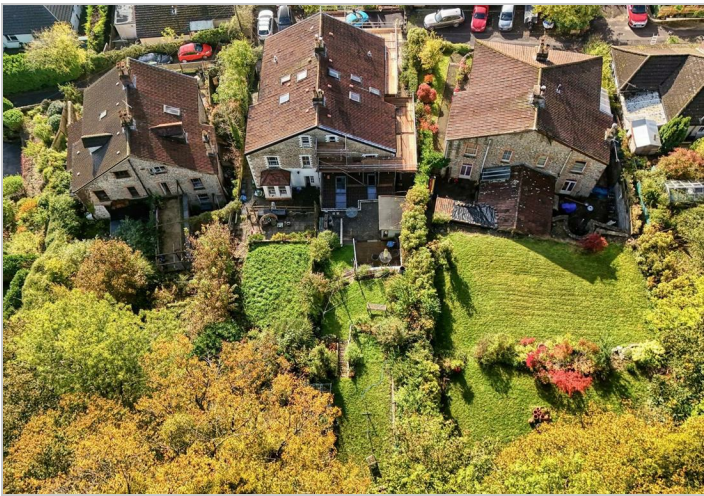
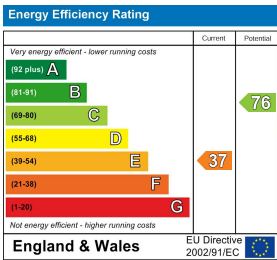
Floor Plan



Area Map



Energy Efficiency Graph



These particulars, whilst believed to be accurate are set out as a general outline only for guidance and do not constitute any part of an offer or contract. Intending purchasers should not rely on them as statements of representation of fact, but must satisfy themselves by inspection or otherwise as to their accuracy. No person in this firms employment has the authority to make or give any representation or warranty in respect of the property.