



16 Oakhill Road

Bath, BA2 5PH

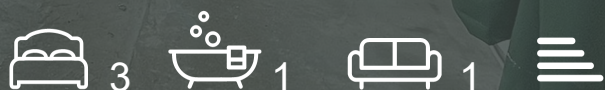
Offers In Excess Of £375,000

This end-terrace house on Oakhill Road presents a wonderful opportunity to acquire a spacious family home in the popular location of Combe Down. With its generous garden, ample parking, and the potential for further development, this property is not to be missed.

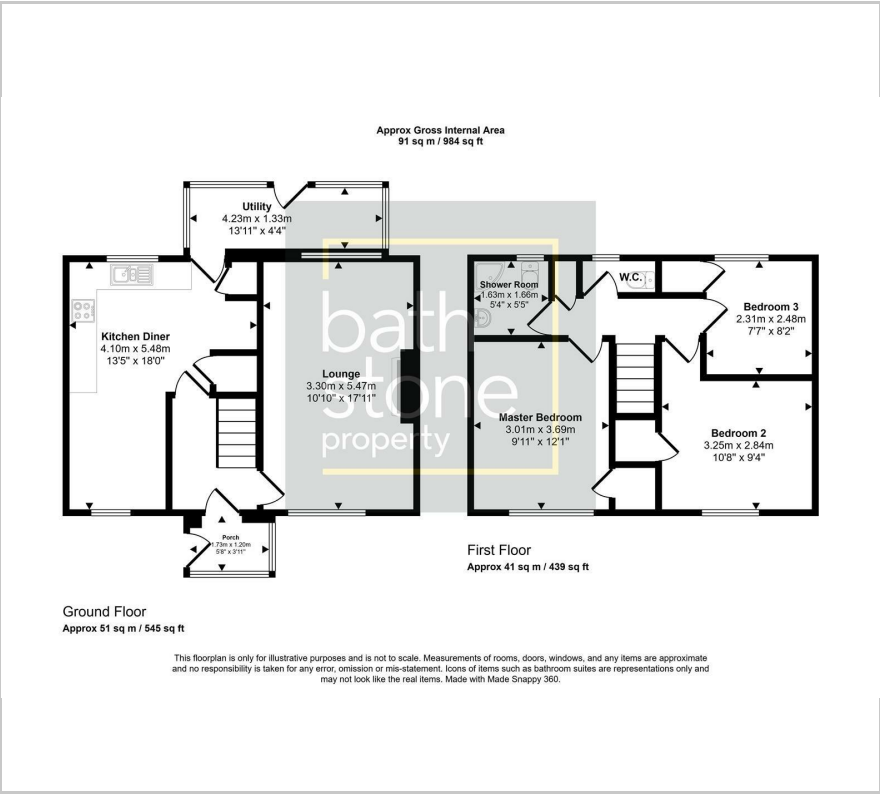
- 3 Bedrooms
- Parking for multiple vehicles
- Spacious Garden
- Potential to extend (subject to planning)
- End Plot
- Solar Panels paid for with a battery storage

Viewing

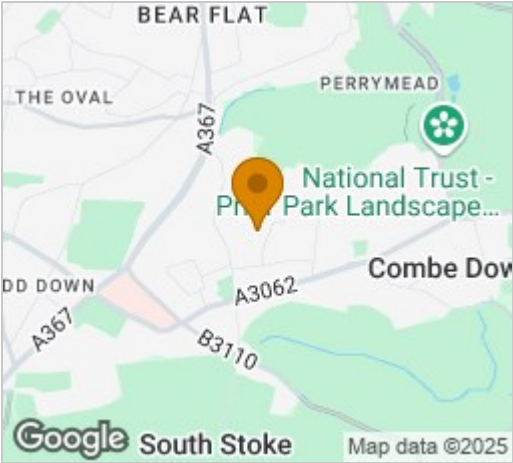
Please contact our Bath Stone Property Office on 01225422224 if you wish to arrange a viewing appointment for this property or require further information.



Floor Plan



Area Map



Energy Efficiency Graph



These particulars, whilst believed to be accurate are set out as a general outline only for guidance and do not constitute any part of an offer or contract. Intending purchasers should not rely on them as statements of representation of fact, but must satisfy themselves by inspection or otherwise as to their accuracy. No person in this firms employment has the authority to make or give any representation or warranty in respect of the property.