



Beechen Cliff Villas,

£750,000

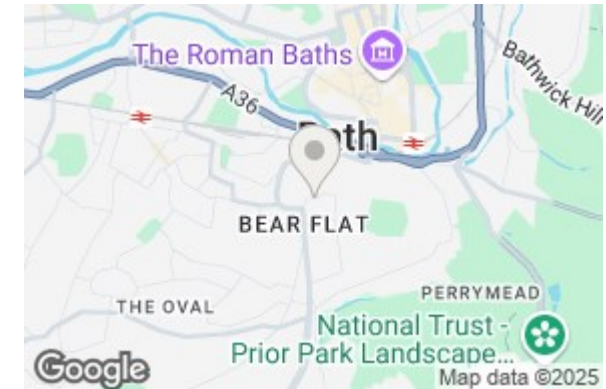
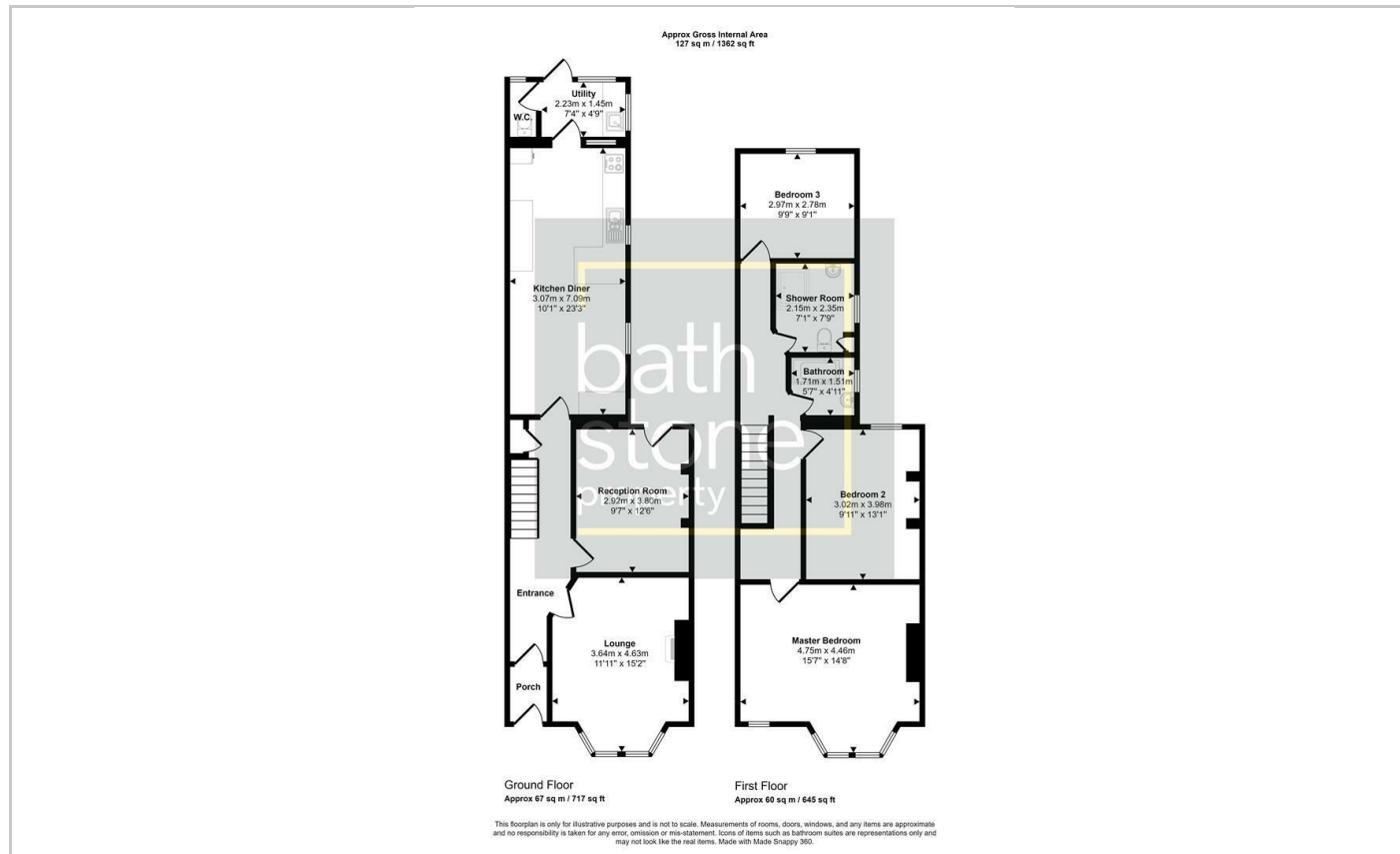
FOR SALE



- Edwardian
- Three Double Bedrooms
- Utility and WC
- Two Reception Rooms
- Mid-Terrace
- Two Family Bathrooms
- Kitchen Diner
- Spacious

## THE PROPERTY

Beechen Cliff Villas is in the heart of Bear Flat, this charming Edwardian terraced house on Beechen Cliff Road offers a delightful blend of period features and modern living. With three generously sized double bedrooms, this property is perfect for families or those seeking extra space. The two reception rooms provide ample room for relaxation and entertaining, making it an ideal setting for both quiet evenings and lively gatherings.



### Energy Efficiency Rating

	Current	Potential
Very energy efficient - lower running costs		
(92 plus) <b>A</b>		
(81-91) <b>B</b>		
(69-80) <b>C</b>		
(55-68) <b>D</b>		
(39-54) <b>E</b>		
(21-38) <b>F</b>		
(1-20) <b>G</b>		
Not energy efficient - higher running costs		
<b>England &amp; Wales</b>	EU Directive 2002/91/EC	