



Hayesfield Park,

Bath

£2,000,000



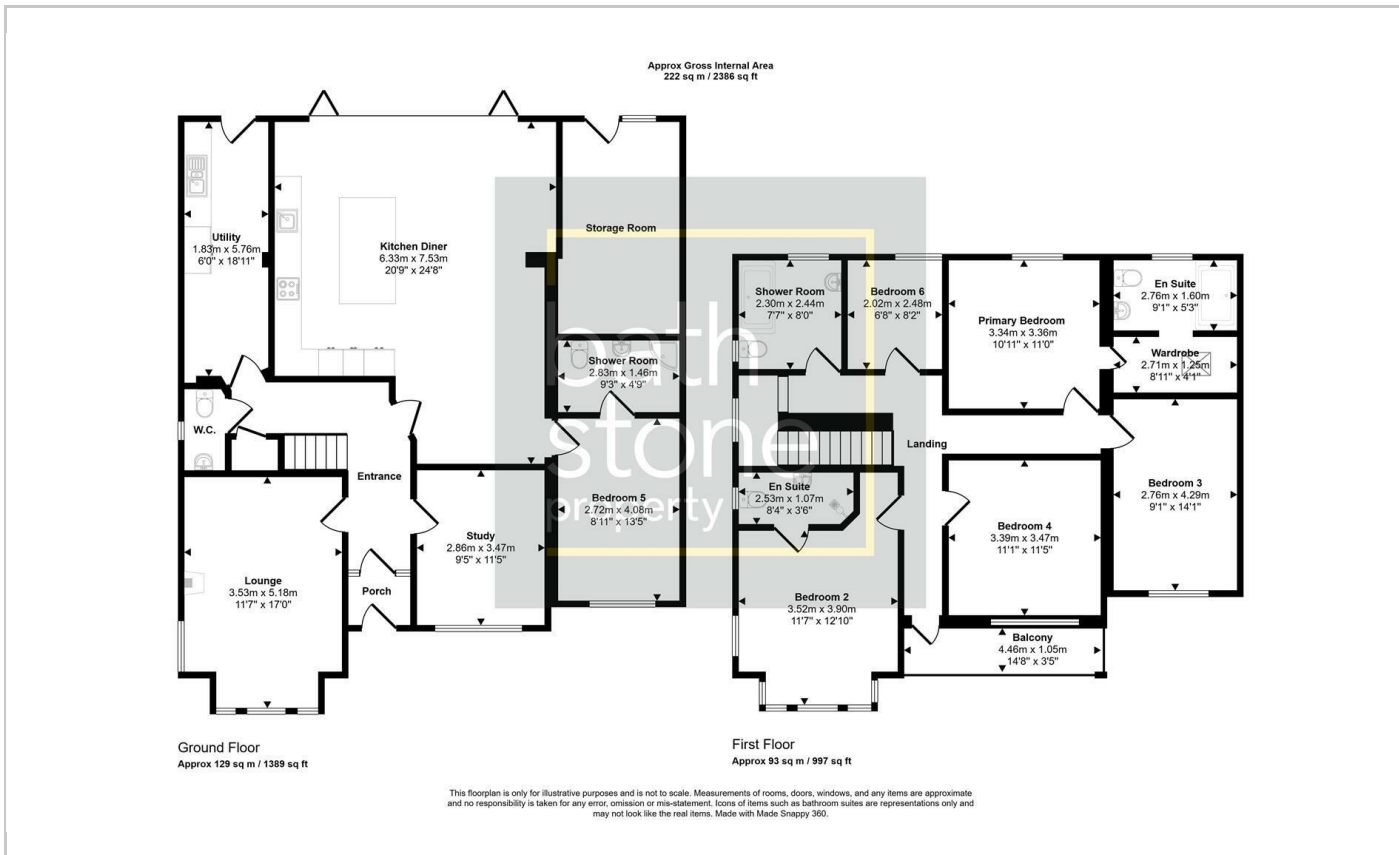
- Detached Property, Fully Renovated.
- Extensive Driveway Parking, with Electrical Charging Station.
- Beautifully Designed and Landscaped Gardens.
- Modern Kitchen Extension.
- Three En-suite Bedrooms.
- Panoramic Views of the City.

THE PROPERTY

Nestled in the charming area of Hayesfield Park, this spacious family house offers a perfect blend of modern living and classic elegance. Recently renovated to a high standard, the property boasts a large open kitchen and family room, ideal for both entertaining guests and enjoying quality time with loved ones. The stylish design is complemented by beautiful parquet flooring, which adds a touch of sophistication to the home.

For those with electric vehicles, the convenience of off-street parking with an electric charging point is a notable feature, ensuring that your daily commute is both practical and eco-friendly. This property is not just a house; it is a welcoming family home that provides ample space for relaxation and recreation.

With its prime location in Bath, residents can enjoy the vibrant local community, excellent schools, and a variety of amenities just a stone's throw away. This home is perfect for families seeking comfort, style, and convenience in one of the most picturesque cities in the UK. Don't miss the opportunity to make this stunning property your own.



Energy Efficiency Rating

	Current	Potential
Very energy efficient - lower running costs		
(92 plus) A		
(81-91) B		
(69-80) C	71	80
(55-68) D		
(39-54) E		
(21-38) F		
(1-20) G		
Not energy efficient - higher running costs		
England & Wales	EU Directive 2002/91/EC	