



## 58 Longfellow Avenue

Bath, BA2 4SH

£2,100 PCM

Poets Corner, lovely three bedroom semi detached family home located in a cul de sac with garage and off road parking. Two reception rooms, cloakroom, new bathroom, neutral décor throughout. Available early April 2025. Available for a family or couple.

- Poets Corner location
- Three bedrooms
- Semi detached
- Garage
- Off road parking
- New bathroom
- Neutral décor throughout
- Two receptions
- Utility room
- Cul de sac

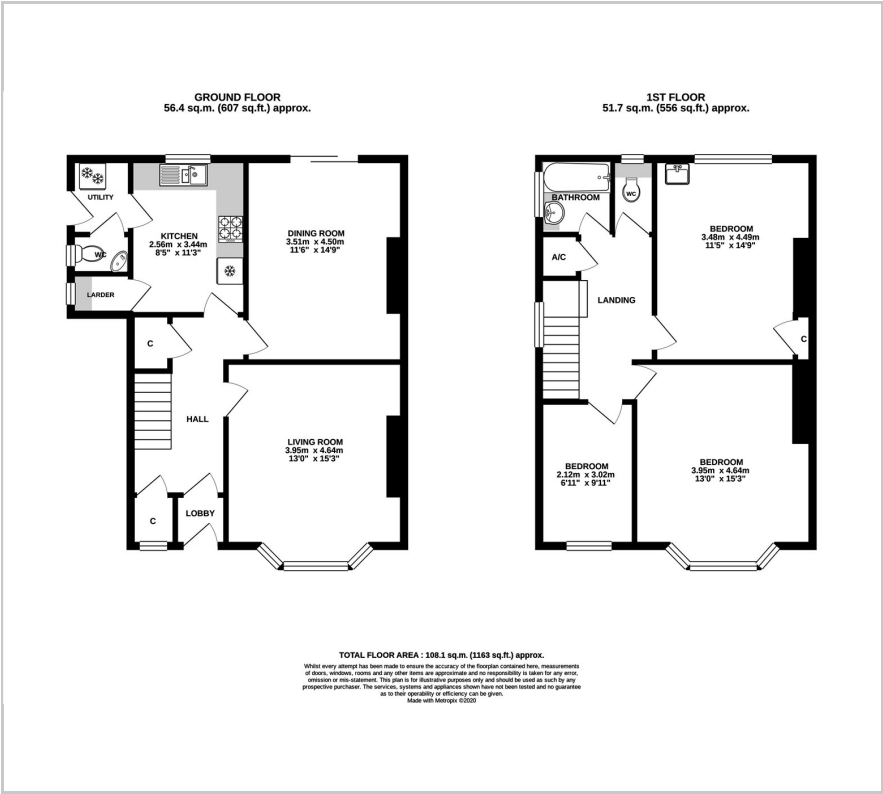
### Viewing

Please contact our Bath Stone Property Office on 01225422224 if you wish to arrange a viewing appointment for this property or require further information.





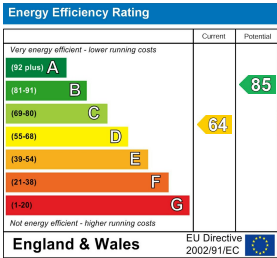
Floor Plan



Area Map



Energy Efficiency Graph



These particulars, whilst believed to be accurate are set out as a general outline only for guidance and do not constitute any part of an offer or contract. Intending purchasers should not rely on them as statements of representation of fact, but must satisfy themselves by inspection or otherwise as to their accuracy. No person in this firms employment has the authority to make or give any representation or warranty in respect of the property.