



Blakeleys Beechen Cliff Road

Bath, BA2 4QT

Price £1,200,000

Nestled on the prestigious Beechen Cliff Road in Bath, this stunning Grade II listed home is a true gem waiting to be discovered. Boasting four bedrooms and three reception rooms, this property offers ample space for comfortable living and is being sold with no chain.

No Chain

Four Bedrooms

Set back from Beechen Cliff Road

Accessed from lane leading to Alexandra Park

Original features including decorative fireplaces
& wood floors

Private Front and Rear Garden

Three Reception Rooms

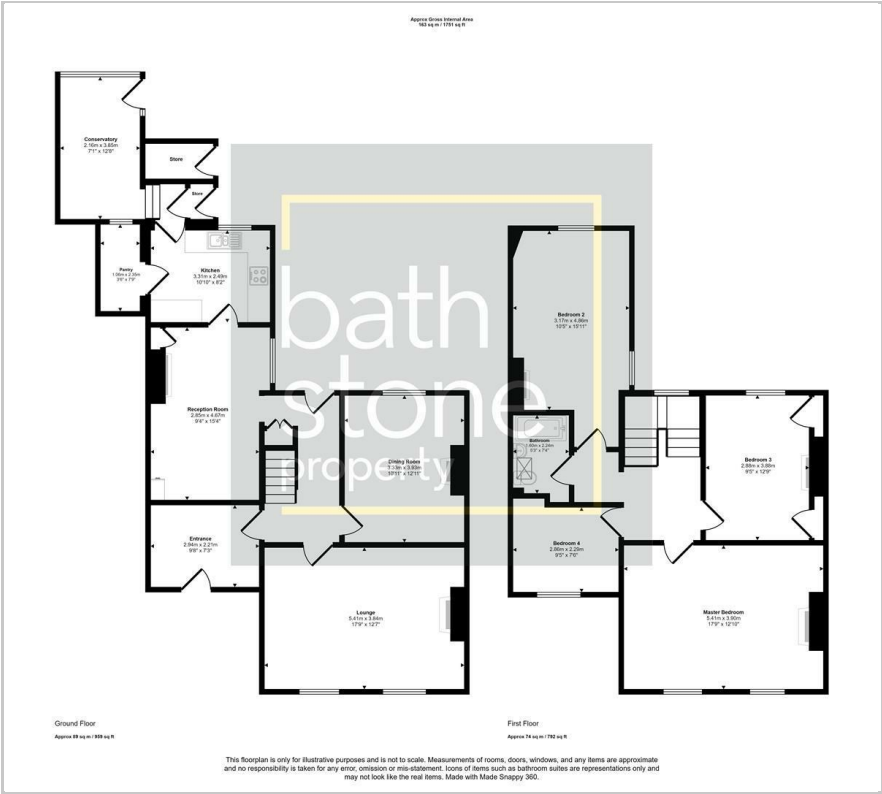
Spacious

Viewing

Please contact our Bath Stone Property Office on 01225422224 if you wish to arrange a viewing appointment for this property or require further information.



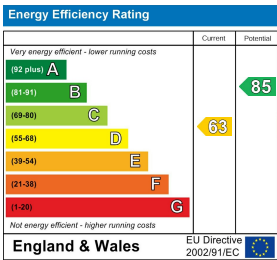
Floor Plan



Area Map



Energy Efficiency Graph



These particulars, whilst believed to be accurate are set out as a general outline only for guidance and do not constitute any part of an offer or contract. Intending purchasers should not rely on them as statements of representation of fact, but must satisfy themselves by inspection or otherwise as to their accuracy. No person in this firms employment has the authority to make or give any representation or warranty in respect of the property.