

Lime Grove Gardens,

£720,000

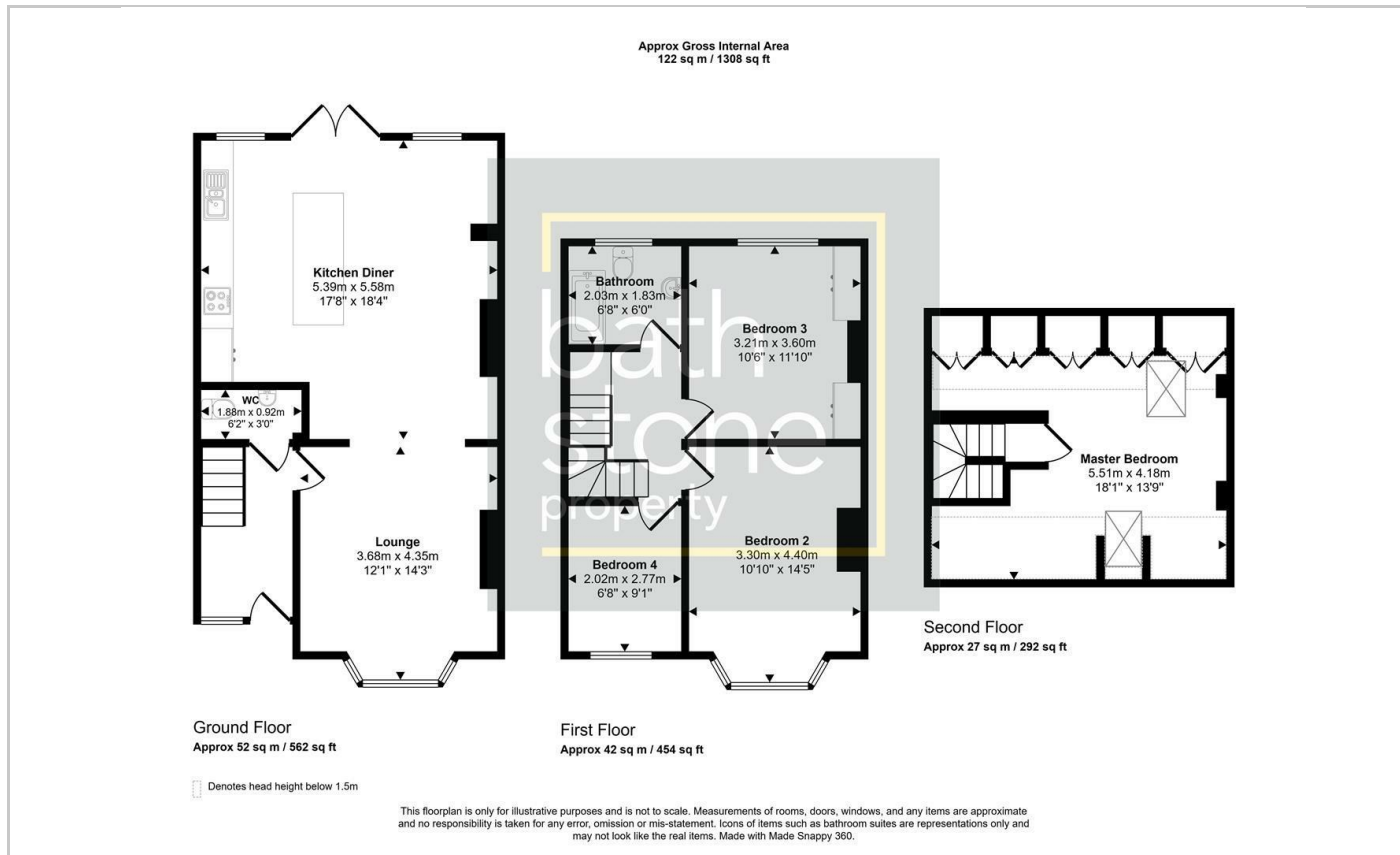
FOR SALE



- Four Bedroom
- Open Plan Kitchen Diner
- Three double Bedrooms
- Solar Panels and Battery
- Mid-Terrace
- Wood Burner
- Very Central
- Air Source Heat Pump

THE PROPERTY

Lime Grove Gardens, is a delightful mid-terrace house which offers a perfect blend of modern living and classic comfort. Spanning an impressive 1,308 square feet, the property boasts four well-proportioned bedrooms, open plan kitchen diner, additional reception room with a log burner, downstairs WC and a family bathroom.



Energy Efficiency Rating		
	Current	Potential
Very energy efficient - lower running costs		
(92 plus) A		
(81-91) B		
(69-80) C		
(55-68) D		
(39-54) E		
(21-38) F		
(1-20) G		
Not energy efficient - higher running costs		
England & Wales	EU Directive 2002/91/EC	