



Ashgrove,

£300,000

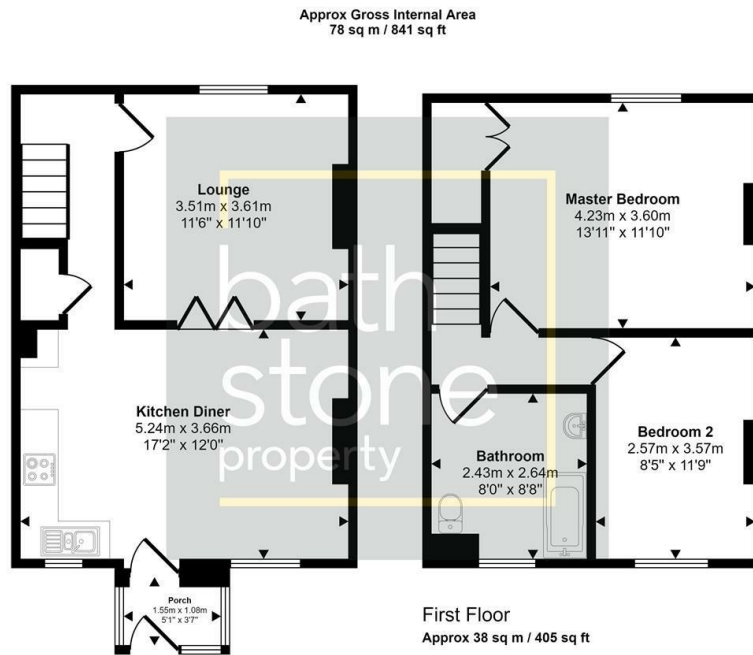
FOR SALE



- No Chain
- End-Terrace Cottage
- Two Double Bedrooms
- Open Plan Kitchen Diner
- Beautiful Long Garden with Views
- A dedicated off-street parking spot

THE PROPERTY

Bath Stone Property is pleased to offer for sale this really well presented end of terrace former Quarryman's Cottage in Peasedown St John. Offered with NO CHAIN and located within easy reach of the village's amenities, including shops, a primary school and two pubs, the cottage boasts a long garden, backing on to open countryside at the rear. Ashgrove offers two double bedrooms, an open plan kitchen, separate living room, a large family bathroom, off street parking and a stunning garden. Don't miss the opportunity to make this charming cottage your own and experience idyllic village life in Ashgrove, Peasedown St John. Book a viewing today and step into your future home.



Ground Floor
Approx 40 sq m / 435 sq ft

This floorplan is only for illustrative purposes and is not to scale. Measurements of rooms, doors, windows, and any items are approximate and no responsibility is taken for any error, omission or mis-statement. Icons of items such as bathroom suites are representations only and may not look like the real items. Made with Made Snappy 360.

Energy Efficiency Rating		Current	Potential
Very energy efficient - lower running costs			
(92 plus) A			88
(81-91) B			
(69-80) C			
(55-68) D		57	
(39-54) E			
(21-38) F			
(1-20) G			
Not energy efficient - higher running costs			
England & Wales		EU Directive 2002/91/EC	