



## High Acre

Paulton, BS39 7RS

£650,000

Listed by our Midsomer Norton office!

This is a fantastic opportunity to purchase a sizeable bungalow located on a great plot, with a 2 acre paddock attached. With generous room sizing, ample parking and easy access into the paddock this is a true gem of a property in Paulton.

- Paddock attached to property
- Spacious bungalow
- Plenty of driveway parking
- Large bedrooms
- Garage and lean to
- Rare opportunity

### Viewing

Please contact our Bath Stone Property (MSN) Office on 01761 360144

if you wish to arrange a viewing appointment for this property or require further information.



4



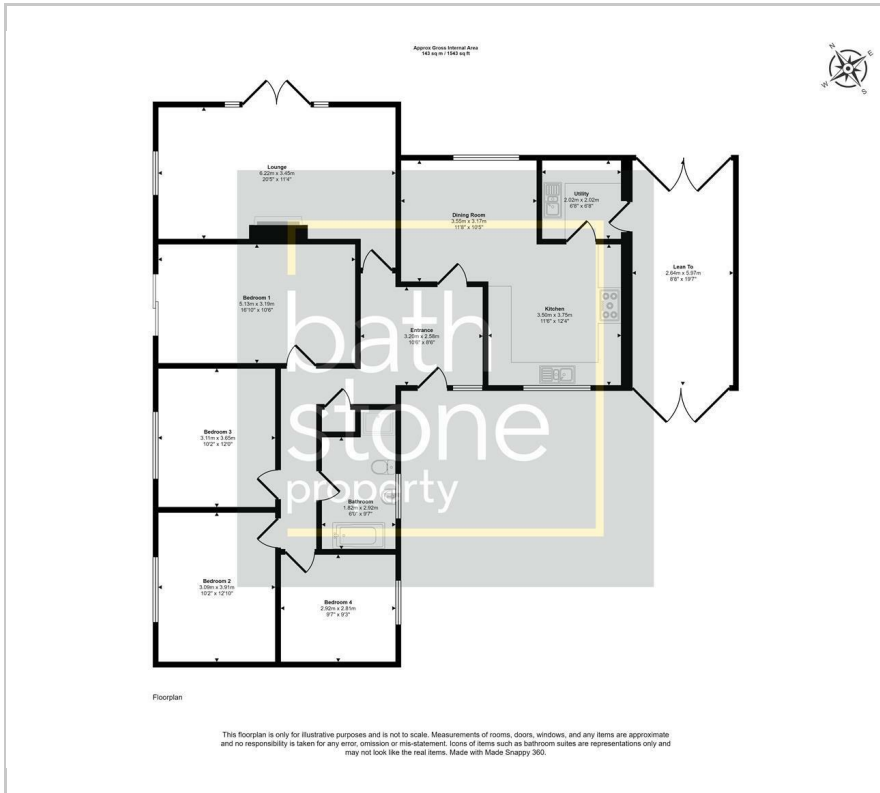
1



2



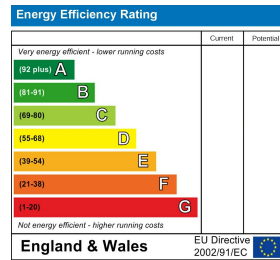
# Floor Plan



# Area Map



# Energy Efficiency Graph



These particulars, whilst believed to be accurate are set out as a general outline only for guidance and do not constitute any part of an offer or contract. Intending purchasers should not rely on them as statements of representation of fact, but must satisfy themselves by inspection or otherwise as to their accuracy. No person in this firm's employment has the authority to make or give any representation or warranty in respect of the property.