



Rackham Court Rosemary Lane

Freshford, Bath, BA2 7PL

Price £775,000

Placed in a gorgeous rural location, this show home like end-terrace offers great open plan kitchen, diner living room perfect for entertaining, three bedrooms, three bathrooms, car port with extra secure storage and private garden. Don't miss out on the opportunity to make this beautiful house your own and enjoy the best of countryside living with a touch of modern elegance.

- Three Bedrooms
- Desired Rural Location
- End-Terrace
- Open-plan Downstairs
- En-suite to Primary Bedroom
- Balcony to Primary Bedroom
- Car Port with additional Storage
- Private
- Solar Panels
- Electric Charging Point

Viewing

Please contact our Bath Stone Property Office on 01225422224 if you wish to arrange a viewing appointment for this property or require further information.



3



3

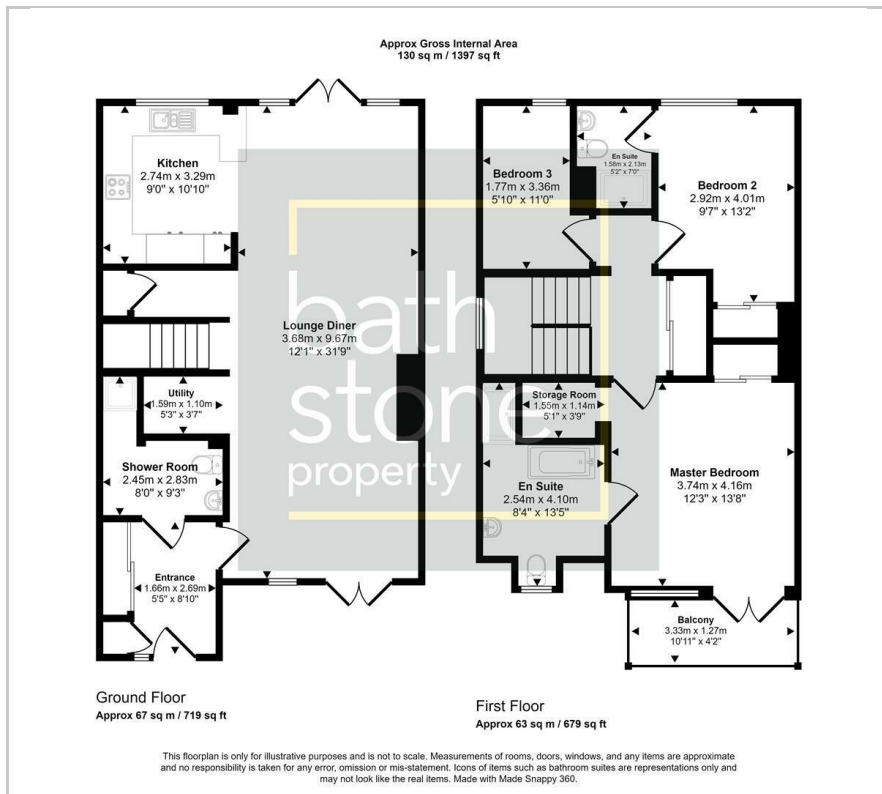


1



B

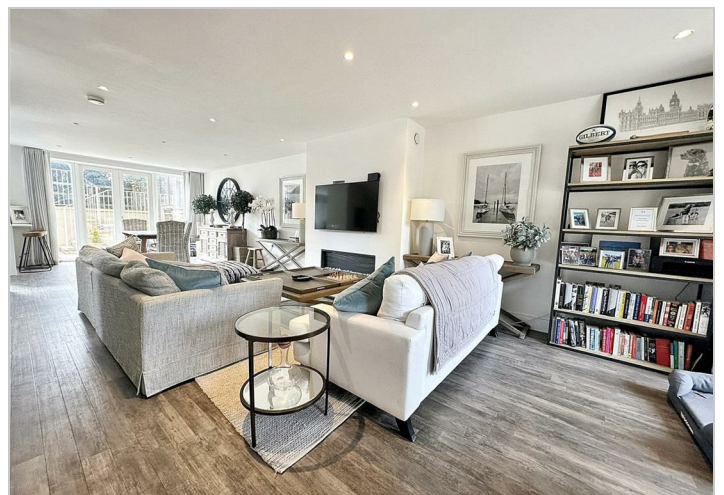
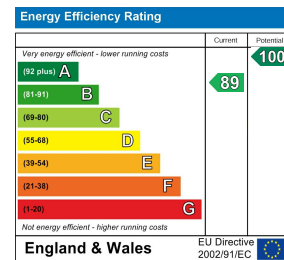
Floor Plan



Area Map



Energy Efficiency Graph



These particulars, whilst believed to be accurate are set out as a general outline only for guidance and do not constitute any part of an offer or contract. Intending purchasers should not rely on them as statements of representation of fact, but must satisfy themselves by inspection or otherwise as to their accuracy. No person in this firm's employment has the authority to make or give any representation or warranty in respect of the property.

1 Hayes Place, Bath, BANES, BA2 4QW

Tel: 01225422224 Email: sales@bathstoneproperty.com <https://www.bathstoneproperty.com>