



4c Greenvale Drive

Timsbury, Bath, BA2 0HP

Offers In Excess Of £325,000

This spacious modern end-terrace home is set on the outskirts of the village in a cul-de-sac location and benefiting from three double bedrooms, spacious lounge diner, generous kitchen, downstairs WC, large family bathroom with bath and shower and additionally en-suite to primary room.

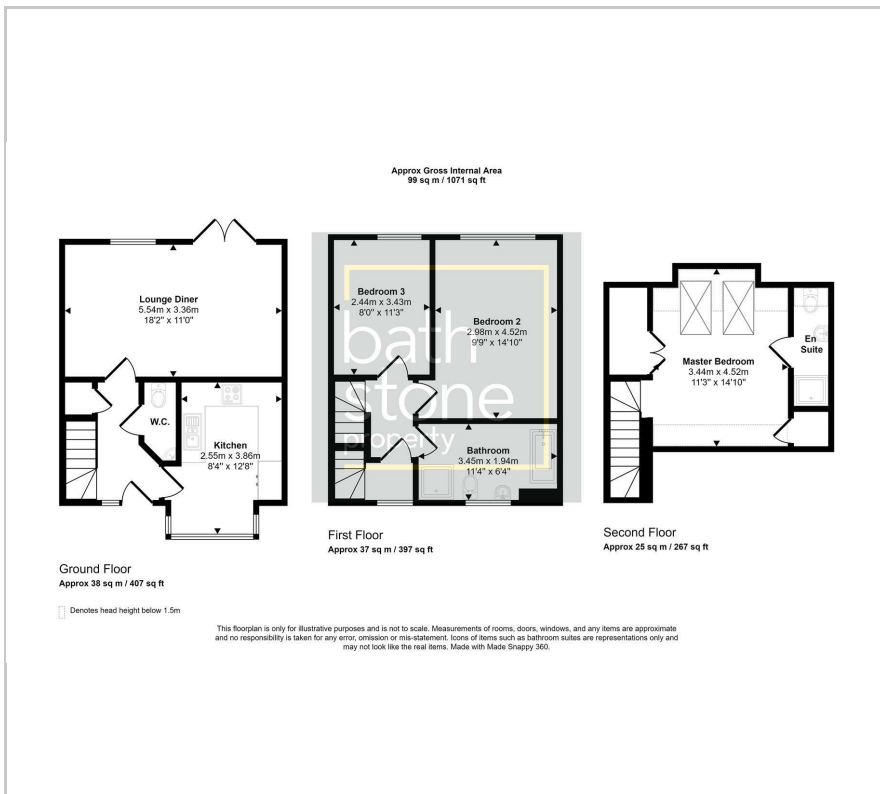
- End-Terrace Town House
- Three Bedrooms
- En-suite to Primary Bedroom
- Double Bedrooms
- Downstairs WC
- Spacious
- Allocated Parking

Viewing

Please contact our Bath Stone Property Office on 01225422224 if you wish to arrange a viewing appointment for this property or require further information.



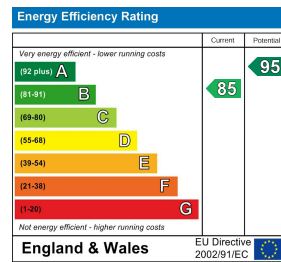
Floor Plan



Area Map



Energy Efficiency Graph



These particulars, whilst believed to be accurate are set out as a general outline only for guidance and do not constitute any part of an offer or contract. Intending purchasers should not rely on them as statements of representation of fact, but must satisfy themselves by inspection or otherwise as to their accuracy. No person in this firm's employment has the authority to make or give any representation or warranty in respect of the property.

1 Hayes Place, Bath, BANES, BA2 4QW

Tel: 01225422224 Email: sales@bathstoneproperty.com <https://www.bathstoneproperty.com>